



NATIONAL GALLERY SINGAPORE

VENUES AT THE GALLERY

STYLISH AND STUNNING
SPACES AT NATIONAL
GALLERY SINGAPORE

LET *Art* SURPRISE YOU

CONTENTS

- 02 About the Gallery
- 04 Awards
- 06 Supreme Court Terrace
- 07 Glass Room
- 08 The Ngee Ann Kongsi Auditorium and Foyer
- 10 Supreme Court Historical Balcony
- 11 Padang Atrium
- 12 Seminar Rooms
- 13 Rooftop Studios
- 14 Singapore Courtyard
- 15 City Hall Verandah
- 16 Padang Deck
- 17 Coleman Deck
- 18 Experiences at the Gallery
- 19 Getting to the Gallery



ABOUT THE GALLERY

National Gallery Singapore is a leading visual arts institution which oversees the world's largest public collection of Singapore and Southeast Asian modern art. Situated at the birthplace of modern Singapore, in the heart of the Civic District, the Gallery is housed in two national monuments - City Hall and former Supreme Court - that have been beautifully restored and transformed into this exciting 64,000 square metres art space. Reflecting Singapore's unique heritage and geographical location, the Gallery aims to be a progressive museum that creates dialogues between the art of Singapore, Southeast Asia and the world to foster and inspire a creative and inclusive society.

This is reflected in our collaborative research, education, long-term and special exhibitions, and innovative programming. The Gallery also works with international museums such as Centre Pompidou, Musée d'Orsay, Tate Britain, National Museum of Modern Art, Tokyo (MOMAT) and National Museum of Modern and Contemporary Art, Korea (MMCA), to jointly present Southeast Asian art in the global context, positioning Singapore as a key node in the global visual arts scene.



AWARDS

AWARDS

2019

Asia Art Pioneers Awards 2019

'Exhibition of the Year' for Awakenings: Art in Society in Asia, 1960s–1990s

TripAdvisor Certificate of Excellence 2019

2018

Winner of Children in Museums Award 2018

Winner of TripAdvisor Traveller's Choice 2018

Singapore Tourism Awards 2018

Best Marketing Idea for Yayoi Kusama: Life is the Heart of a Rainbow Exhibition

2017

The Chicago Athenaeum 2017 International Architecture Awards

D&AD Professional Awards 2017

Special Edition of Iskandar Jaliil: Kembara Tanah Liat – Wood Pencil

Asia Pacific Property Awards 2017

Best Public Service Architecture (Singapore)

TTG Travel Awards 2017

Best Theme Attraction

2016

The Institute of Structural Engineers - IStructE Singapore Structural Awards 2016

Structural Heritage

The Institute of Structural Engineers - IStructE Singapore Structural Awards 2016

Special Mention

Singapore Tourism Awards 2016

Breakthrough Contribution to Tourism, Best Attraction Experience, Best Customer Service for Attractions – Mr Loke Chee Meng, Best Dining Experience

SSSS Structural Steel Excellence Awards 2016

Structural Steel Project of the Year – Trophy Award

Singapore Facility Management Awards 2016

Singapore Best FM Building Owner / Occupier of the Year – Innovation Excellence Award

MICE ASIA Awards 2016

Most Inspiring Venue

Marketing PR Awards 2016

Best Government Sector PR – Bronze Campaign: National Gallery Singapore Launch

The Australian Institute of Architects 2016 International Chapter Architecture Awards

International Award for Public Architecture

The Peak Selections: Gourmet & Travel G Restaurant Awards 2016

Best New Restaurant – National Kitchen, Odette

Asia-Pacific Excellence Awards 2016

Winner for Corporate Advertising: "What Will You See?"

2015

Singapore Institute of Architects Design Award 2015

Institutional Category – Design Award Conservation Category – Honourable Mention

Skyrise Greenery Awards 2015

Community Facility – Excellence Awards

URA Architectural Heritage Awards 2015

Category A Winner

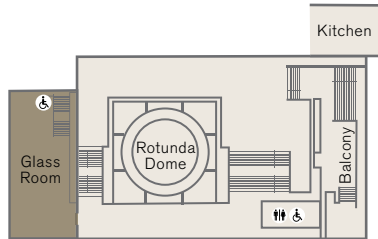
2012

BCA Green Mark Award 2012

Green Mark Gold

SUPREME COURT TERRACE

Built around the former Supreme Court's Rotunda dome, old and new architecture merge perfectly here. The Supreme Court Terrace features contemporary tree-like structures and a distinctive glass and metal canopy that bathes it in filtered, natural light. This captivating space is ideal for hosting a variety of sophisticated events.



SUPREME COURT TERRACE

DETAILS

510 sqm | Standing capacity: 300 | 20 5ft round tables

Suitable for

- Private functions
- Product and media launches
- Gala dinners
- Cocktail receptions

AMENITIES

- * Kitchen facilities
- * Storage/Preparation Room
- * Wheelchair Accessible

GLASS ROOM

The Glass Room offers a charming setting for private events such as evening cocktails, soirées and dinner receptions. Overlooking the dome of the Rotunda—the building's former law library—this space is an extension of the Supreme Court Terrace and boasts an elegant ambience with natural lighting.



DETAILS

232 sqm | Standing capacity: 140 | 6 5ft round tables

Suitable for

- Private functions
- Product and media launches
- Cocktail receptions

AMENITIES

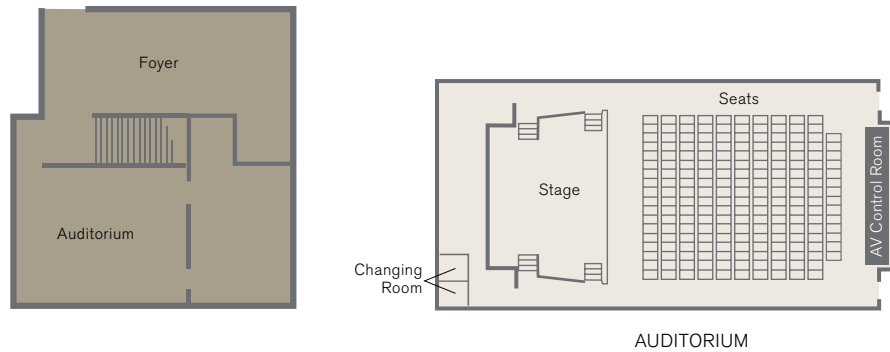
- * Storage/Preparation Room
- * Wheelchair Accessible



THE Ngee Ann Kongsi Auditorium and Foyer

Nestled in the basement of the City Hall Wing, the Ngee Ann Kongsi Auditorium features a theatre seating layout—tiered seats and a stage—and state of the art audio visual equipment.

Guests can network, relax and indulge in culinary offerings in the beautiful accompanying foyer after the presentation.



DETAILS

Auditorium

Seating capacity:
212 + 2 wheelchair spaces

Foyer

198 sqm | Standing capacity: 130

Suitable for

- Talks and seminars
- Award ceremonies
- Symposiums
- Film screenings
- Recitals

AMENITIES (AUDITORIUM)

- Digital mixer
- Up to 4 mics per event
- Rostrum with 2 wired gooseneck mics
- Surround sound speakers
- HDMI input
- In-built projection screen
- 8.5k Lumens projector
- Male and female changing rooms
- 2 32" Confidence Monitors
- 2 Interpreter Console
- 2 Multi-channels emitters and 2 transmitters
- 200 Wireless receivers

AMENITIES (FOYER)

- 2 wireless mics
- Analogue - 12 channels mixer
- 4 speakers
- 10k Lumens projector



SUPREME COURT HISTORICAL BALCONY

The Supreme Court Historical Balcony is an alfresco space that offers guests a beautiful view of Singapore's skyline. Steeped in history, its imposing columns were designed by Italian sculptor, Rudolfo Nolli, who also designed the building's tympanum which symbolises justice.



DETAILS

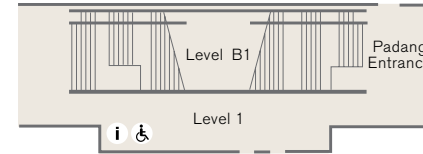
141 sqm | Capacity: 65

Suitable for

- Soirées
- Cocktail receptions

PADANG ATRIUM

The Padang Atrium sits between the former City Hall and Supreme Court buildings. Natural light floods this space in the day, while the sculptural canopy made from golden filigree metal and glass provides ample shade. At night, atmospheric lighting enhances the grand architectural features and six-storey high tree-like columns.



DETAILS

545 sqm | Standing capacity: 350

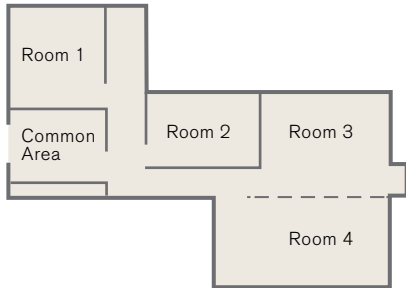
Suitable for

- Soirées
- Cocktail receptions



SEMINAR ROOMS

The Gallery's modern seminar rooms are flexible and can be tailored to the requirements of any event. Air-conditioned and purpose-built, they offer a comfortable space for discussions.



Note: Room 3 & 4 can be combined

DETAILS

Combined size of 126 sqm

Theatre seating capacity

- Seminar Room 1: **17**
- Seminar Room 2: **15**
- Seminar Room 3: **23**
- Seminar Room 4: **28**

Suitable for

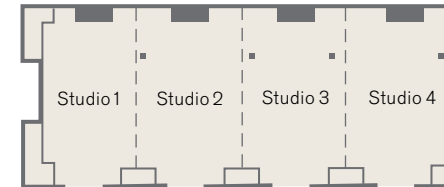
- Breakout sessions
- Seminars
- Meetings
- Workshops

AMENITIES (PER ROOM)

- 70" LCD screen
- HDMI input
- In-built speakers
- Projector
- Flip-charts
- Seminar Tables & Chairs

ROOFTOP STUDIOS

Located on the Gallery's tranquil rooftop, these versatile and air-conditioned rooms can be adapted to suit a variety of events.



Note: Studio 1 - 4 can be combined

DETAILS

Combined size of 147sqm

Theatre seating capacity

- Rooftop Studio 1: **23**
- Rooftop Studio 2: **24**
- Rooftop Studio 3: **22**
- Rooftop Studio 4: **28**

Suitable for

- Breakout sessions
- Seminars
- Meetings
- Workshops

AMENITIES (PER STUDIO)

- 70" LCD screen
- HDMI input
- In-built speakers
- Washbasin
- Projector
- Flip-charts
- Seminar Tables & Chairs



SINGAPORE COURTYARD

This unique and spacious courtyard is set in the middle of the former City Hall building, which first housed the Municipal Council and later, the offices of various ministries including the Prime Minister's Office.

DETAILS

236 sqm | Standing capacity: 140

Suitable for

- Opening receptions and speeches
- Soirées
- Cocktail receptions



CITY HALL VERANDAH

The Verandah overlooks the historical Padang and famous Singapore landmarks such as Marina Bay Sands and the Singapore Cricket Club. With the majestic facade of City Hall as a backdrop, this space adds a touch of elegance to any occasion.

DETAILS

104 sqm | Standing capacity: 65

Suitable for

- Soirées
- Cocktail receptions



PADANG DECK

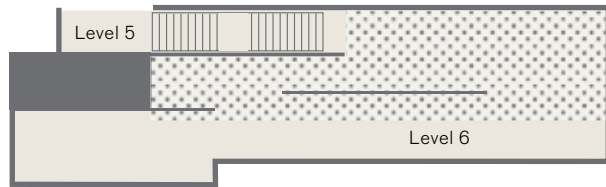
Located on the rooftop of the City Hall Wing, this open-air space offers spectacular, panoramic views of Singapore's skyline and is suitable for elegant alfresco events.


DETAILS

301 sqm | Standing capacity: 180
(includes sheltered area)

Suitable for

- Soirées
- Cocktail receptions



 Sheltered Area

COLEMAN DECK

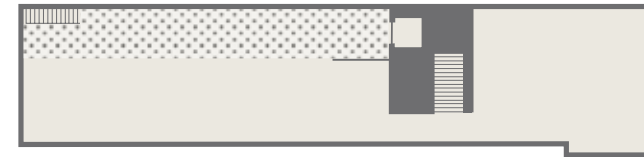
Overlooking the beautiful grounds of St Andrew's Cathedral and with Marina Bay Sands in the distance, this venue offers guests a unique opportunity to relax and socialise away from the bustling city.


DETAILS

333 sqm | Standing capacity: 200

Suitable for

- Soirées
- Cocktail receptions



 Sheltered Area



EXPERIENCES AT THE GALLERY



To complete the experience, inspire and engage your guests through a wide variety of finely crafted guided tours and workshops to begin a conversation about arts and culture.

The National Gallery Singapore offers the option of privately guided and customised tours of the world's most extensive permanent collection of Southeast Asian artworks, set amidst the historic walls of the former Supreme Court and City Hall building.

OPENING HOURS

Sat–Thu, 10am–7pm
Fri, 10am–9pm

GETTING TO THE GALLERY

COACH DROP-OFF POINT

BY CAR

Drop-off point for cars is located at Coleman Street entrance.

By MRT

5-minute walk from City Hall MRT station via the Art Connector

10-minute walk from Clarke Quay and Raffles Place MRT stations

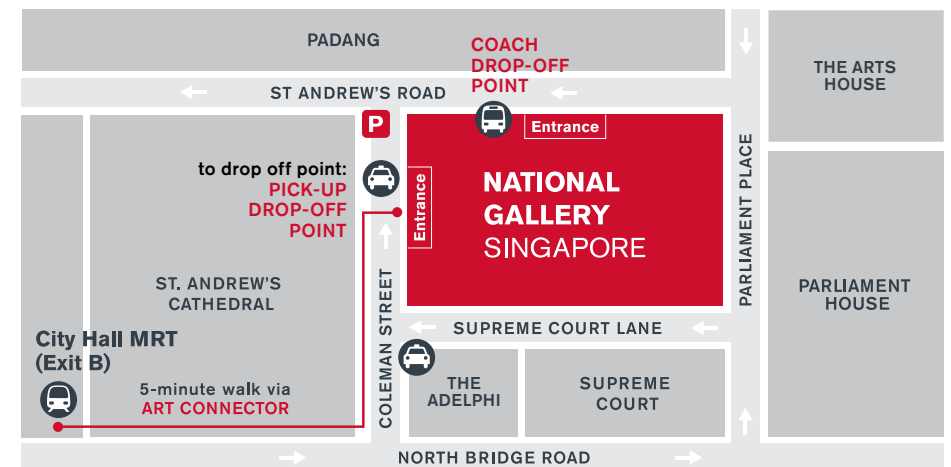
P There are 200 parking lots on Levels B2 and B3. Entrance to the carpark is only accessible via St Andrew's Road by taking a left turn onto the rightmost lane of Coleman Street.

BY TAXI

The nearest taxi stands are located at Coleman Street entrance of the Gallery and The Adelphi.

Gallery Parking Rates

Daily, including Public Holidays
7am–6pm \$1.30 per half hour
6pm–1am \$3.20 per entry
\$1.00 per entry for motorcycles



ADDRESS: 1 St Andrew's Road #01-01 Singapore 178957

ENQUIRIES: 6271 7000

WEBSITE: www.nationalgallery.sg/venue-rental

For more information, please visit www.nationalgallery.sg/venue-rental
or email your sales representative

 nationalgallerysg

 nationalgallerysingapore

 natgallerysg

 nationalgallerysg

www.nationalgallery.sg

1 St Andrew's Road #01-01 Singapore 178957

Copyright in the content in this brochure may also reside in persons and entities other than, and in addition to the Gallery. We are fully committed to respecting the intellectual property rights of others and always use our best efforts to obtain permission for images used. Please contact us should you have any queries about this. Unless otherwise mentioned. This brochure is published by National Gallery Singapore. All rights reserved. Materials in this publication may not be reproduced in part or in whole without written consent of the Gallery. Every effort has been made to ensure the accuracy of information within this brochure. However, changes are sometimes unavoidable and the Gallery reserves the right to make modifications without prior notice. Please visit www.nationalgallery.sg for the most updated information. Published in Nov 2019. All information is correct at time of print.