



NATIONAL GALLERY SINGAPORE



JUL-SEP
2025

GUIDE+ MAP



SCAN FOR
DIGITAL COPY



Welcome to National Gallery Singapore

National Gallery Singapore is celebrating its 10th anniversary this year as a leading visual arts institution and the largest modern and contemporary art museum in Southeast Asia. Dedicated to making art accessible, the Gallery engages audiences of all ages through its exhibitions, educational programmes and public festivals. Housed in two national monuments, it stands as an iconic cultural landmark where architectural grandeur meets deep historical significance.



SUPREME COURT WING

- Level 1:** *Angin Cloud* by Art Labor
- Levels 3–5:** *Between Declarations & Dreams: Art of Southeast Asia Since the 19th Century*
- Level 3:** *Dalam Southeast Asia: Diplomacy and Desire: Basoeki Abdullah in Singapore*
- Level 3:** *Laws of Our Land: Foundations of a New Nation*

CITY HALL WING

- Level B1:** *Dalam Collection: Where Ink Tides Meet*
- Level 1:** *Eidolon* by Vong Phaophanit and Claire Oboussier
- Level 2:** *Singapore Stories: Pathways and Detours in Art*
- Level 2:** *Dalam Singapore: Tchang Ju Chi: Tireless Camel*
- Level 3:** *City of Others: Asian Artists in Paris, 1920s–1940s*
- Level 4:** *Fernando Zóbel: Order is Essential*
- Level 5:** Ng Teng Fong Roof Garden Commission: *GLISTEN* by Lisa Reihana

Need a guide?



Looking for an itinerary to guide your visit? Select from a range of Self-Guided Tours—whether you are visiting for the first time, looking for a tour of our iconic masterpieces or just here for the 'gram, there is something for everyone!



SCAN TO TRY

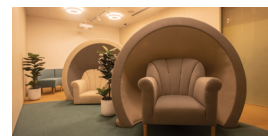
AN ACCESSIBLE EXPERIENCE FOR ALL

The Gallery is committed to creating an inclusive experience that can be enjoyed by visitors with access needs.



SCAN FOR ACCESS GUIDE

Located at City Hall Wing, Level B1, the **Calm Room** is a dedicated space where visitors can rest if they are feeling overstimulated or overwhelmed by their environment.



FREE WI-FI

Connect to our free visitor Wi-Fi: **"Gallery Visitors"**

PHOTOGRAPHY & RECORDINGS

Please note that photographs, video and audio recordings may be taken in and around our premises from time to time. By entering the Gallery, you consent to having any photographs or recordings taken of you used by the Gallery for publishing, marketing and other purposes. Please approach our Gallery staff should you have any concerns.

LEGEND

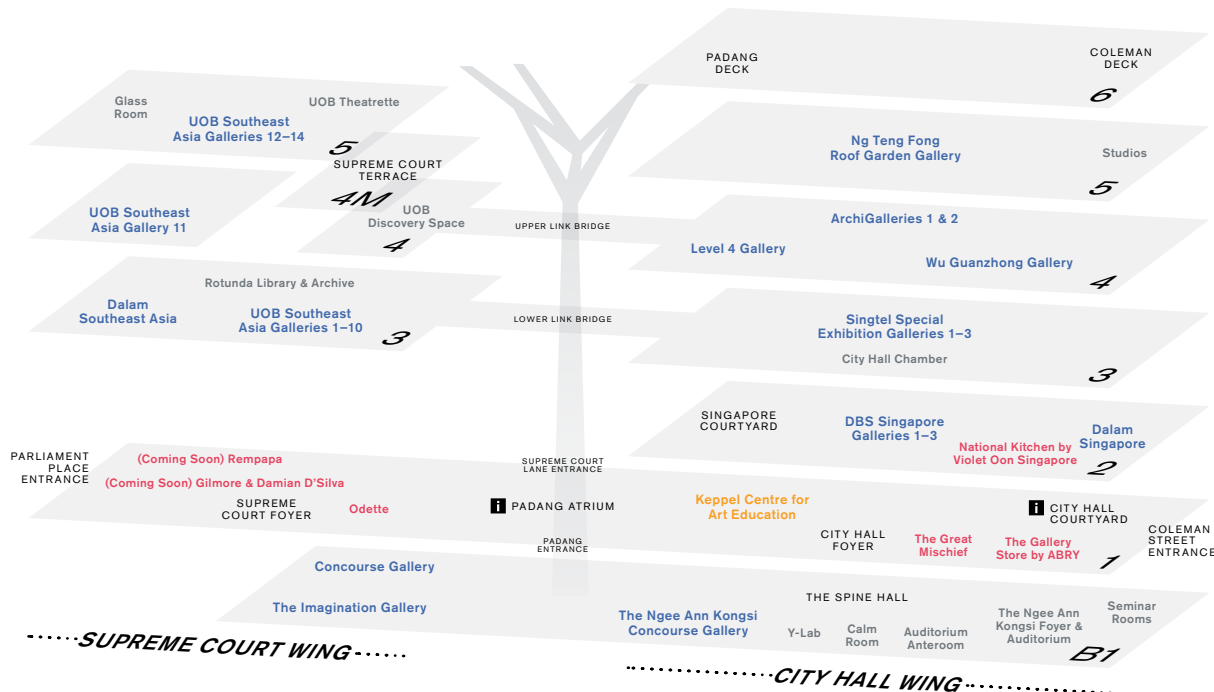
- Galleries
- Education
- Shop & Dine
- Museum Services and Special Facilities
- MUSEUM SPACES

i Available at Visitor Services

Level 1 Padang Atrium and
Level 1 City Hall Courtyard

- Gallery Passes
- Tours
- Lost & Found

Carparks at City Hall Wing,
Levels B2 and B3 accessible
via Lift Lobbies A and B only



Must-Sees!



Raden Saleh's *Boschbrand* (Forest Fire)

- Supreme Court Wing, Level 3,
UOB Southeast Asia Gallery 2

This monumental painting depicts wild animals chased by flames in a dense, elaborate composition. A year after it was gifted to his patron King Willem III of the Netherlands, Raden Saleh was awarded the title of "King's Painter."

This work has been adopted by Yong Hon Kong Foundation.



Lee Boon Ngan's *Singapore Breakfast*

- City Hall Wing, Level 2,
DBS Singapore Gallery 1

Painted in the 1970s yet instantly recognisable today, this still life oil painting captures the timeless charm of familiar breakfast staples that have nourished generations—two soft-boiled eggs, thick-cut bread, butter and coffee.

SELF-GUIDED TOUR

Catch eight iconic
and historically
significant artworks
on our must-see list!

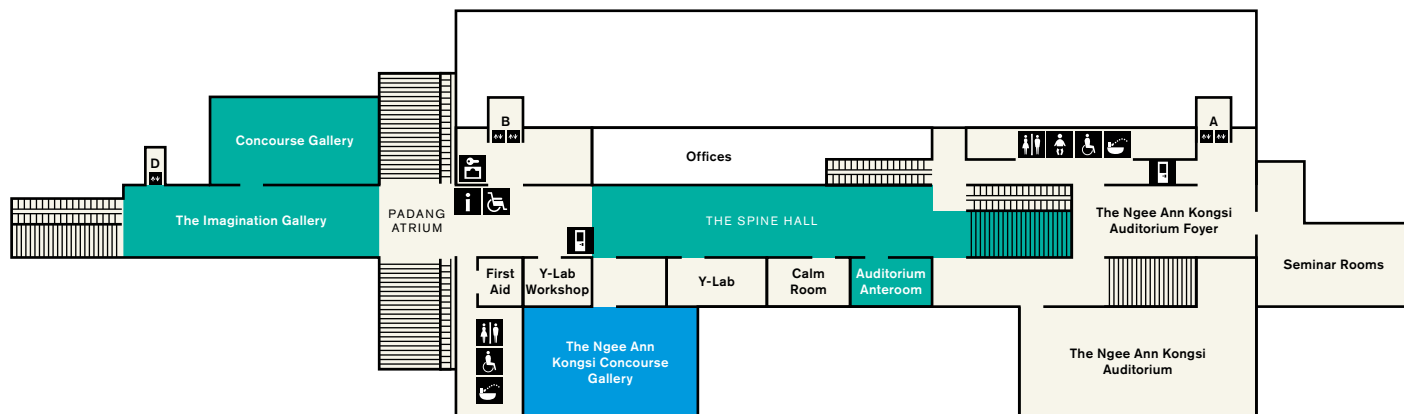


SCAN TO
TRY NOW



For the latest information on
our exhibitions and festivals,
scan the QR code to visit
nationalgallery.sg/whats-on.





..... SUPREME COURT WING

..... CITY HALL WING



Gallery Children's Biennale 2025: Tomorrow We'll Be...

Various locations within the Gallery on Levels B1 and 1

The Gallery Children's Biennale (GCB) embodies the Gallery's commitment to inspire young and curious minds with art.

The fifth edition of GCB returns with the theme of **Tomorrow We'll Be...**, inviting children to reflect on the endless possibilities of their future by exploring four core values: **Joy, Kindness, Dream and Love**. Both children and adults alike can look forward to eight multi-sensorial artwork installations by local and international artists, as well as a series of fun and engaging programmes!

The Gallery Children's Biennale was made possible with the support of ToteBoard, Cultural Matching Fund and OUE.



FREE FOR ALL



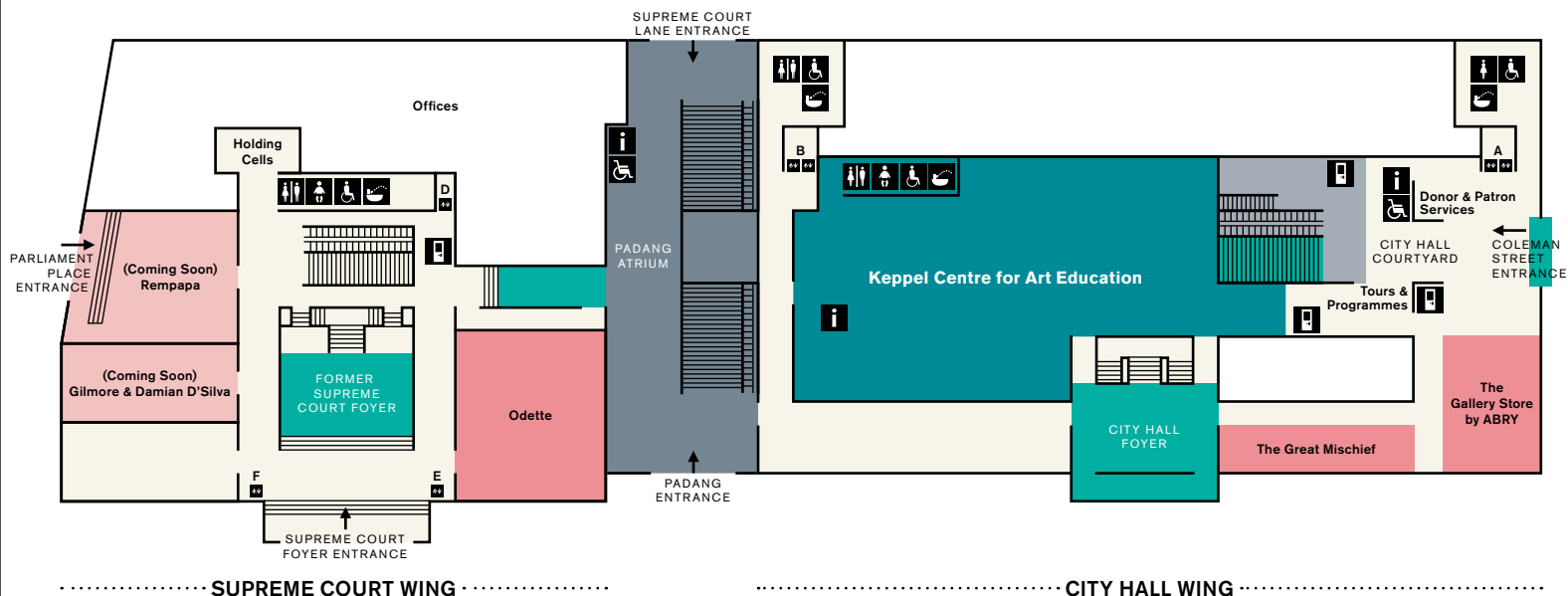
FREE FOR ALL

Dalam Collection:
Where Ink Tides Meet

City Hall Wing, Level B1,
The Ngee Ann Kongsi Concourse Gallery

Where Ink Tides Meet showcases over 50 new acquisitions and previously unseen works, emphasising the Gallery's growing ink collection and its ongoing commitment to the research and acquisition of ink art.

Where Ink Tides Meet Public Tour
English Sat–Sun 11.30am | Mandarin Sat–Sun 3pm



Angin Cloud by Art Labor

Padang Atrium

Angin Cloud, part of the Gallery's OUTBOUND series, imagines the rural industrialisation of a hill side from Vietnam's Central Highlands. Pairing Jrai wood sculptures and suspended pillars that recall farming structures for growing pepper vine, the installation references *angin*, a Jrai concept that revolves around the dynamic potential for change found in water and air.

FREE
FOR ALL



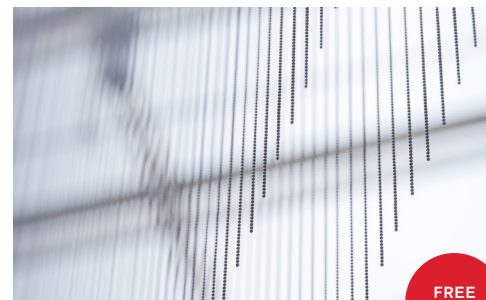
Keppel Centre for Art Education

City Hall Wing, Level 1

The Keppel Centre for Art Education aims to foster lifelong love for art in children with a fun learning experience for the entire family to enjoy. Inspired by the theme of **Art & Wonder**, the Centre features seven learning zones, with stimulating and interactive experiences for children aged 4 to 12 to learn about art through play.

The Gallery is grateful to Keppel for their generous support in making the Keppel Centre for Art Education possible.

FREE
FOR ALL

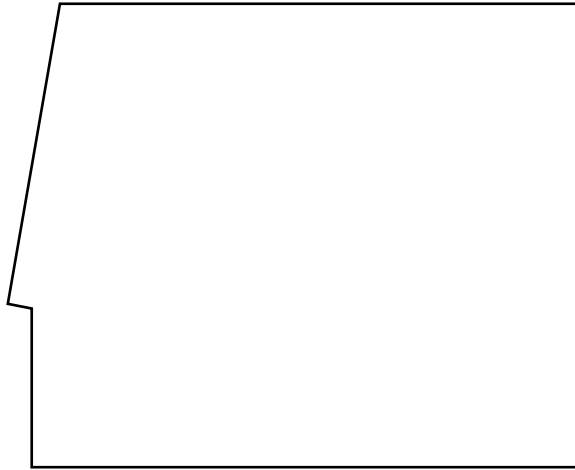


Eidolon by Vong Phaophanit and Claire Oboussier

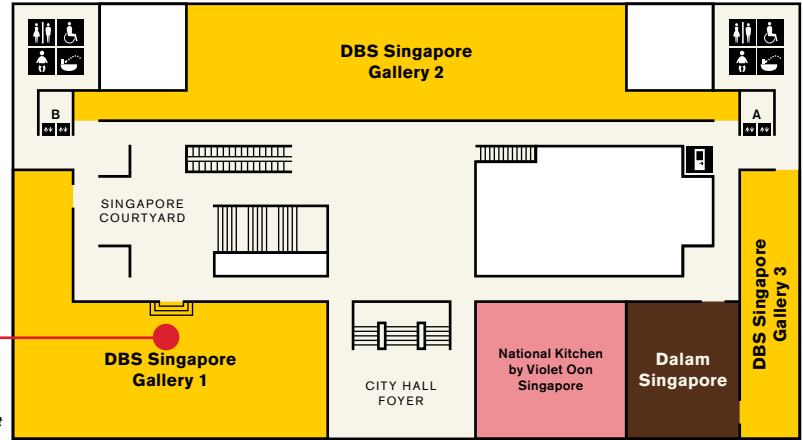
City Hall Wing, City Hall Courtyard

Eidolon is an intervention that plays on multiple registers—architectural, historical, critical and poetic. A diagonal plane bisecting the City Hall Courtyard, it evokes a veil, threshold, mirage or spectre. Monumental yet ethereal, its asymmetry subtly disrupts the space, prompting a shift in visitors' perception and movement.

FREE
FOR ALL



MUST-SEE!
Lee Boon Ngan's
Singapore Breakfast



..... SUPREME COURT WING

..... CITY HALL WING



Singapore Stories: Pathways and Detours in Art

City Hall Wing, Level 2,
DBS Singapore Gallery

This new exhibition presents a layered, ever-changing story of Singapore's art history, as it continually questions itself: Whose story is this? Where is home? What is art for? See iconic artworks from the 19th century to present by artists from various communities and subject areas, including Georgette Chen, Liu Kang and more. Timed with SG60, it celebrates the resilience, creativity and diversity of Singapore and its art history.

DBS Singapore Gallery
Highlights Tour
English Thu–Sun 3.30pm
Mandarin Sat–Sun 2.30pm

The DBS Singapore Gallery is made possible with the support of DBS.
Singapore Stories: Pathways and Detours in Art
is supported by the Cultural Matching Fund.

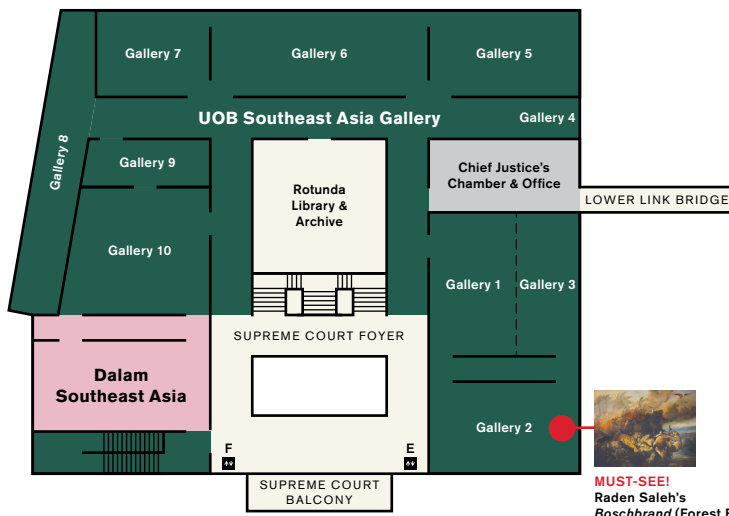


Tchang Ju Chi: Tireless Camel

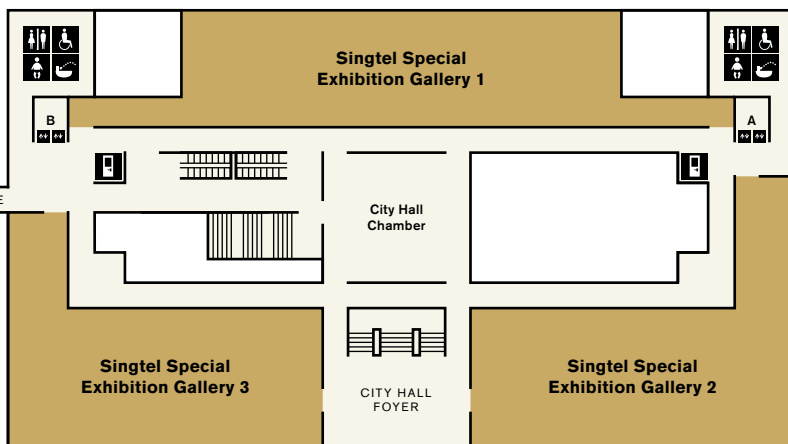
City Hall Wing, Level 2,
DBS Singapore Gallery

Tchang Ju Chi was a prominent artist who shaped Singapore's nascent arts scene in the 1920s–1940s. This exhibition brings together rarely seen artworks and archival materials, shedding light on his life and practice.

OPENS
18 JUL

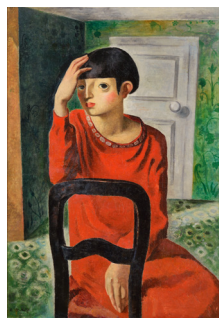


MUST-SEE!
Raden Saleh's
Boschbrand (Forest Fire)



..... SUPREME COURT WING

..... CITY HALL WING



CLOSES
17 AUG

City of Others: Asian Artists in Paris, 1920s–1940s

City Hall Wing, Level 3,
Singtel Special
Exhibition Gallery

This groundbreaking special exhibition explores the experiences of Asian artists in Paris during the 1920s to 1940s. Featuring over 200 works, including paintings, sculptures, lacquer ware, decorative arts and rare archival records, it showcases artists like Fougita Tsuguharu, Lê Phổ, Liu Kang and Amrita Sher-Gil. Register for a free docent tour for more insights at our Tours and Programmes counter.

City of Others
Public Tour

English Thu–Sun 3.30pm
Mandarin Sat–Sun 1.30pm

The Singtel Special Exhibition
Gallery is made possible with
the support of Singtel.

SERIES
PARTNER



PRESENTING
PARTNER

J.P.Morgan

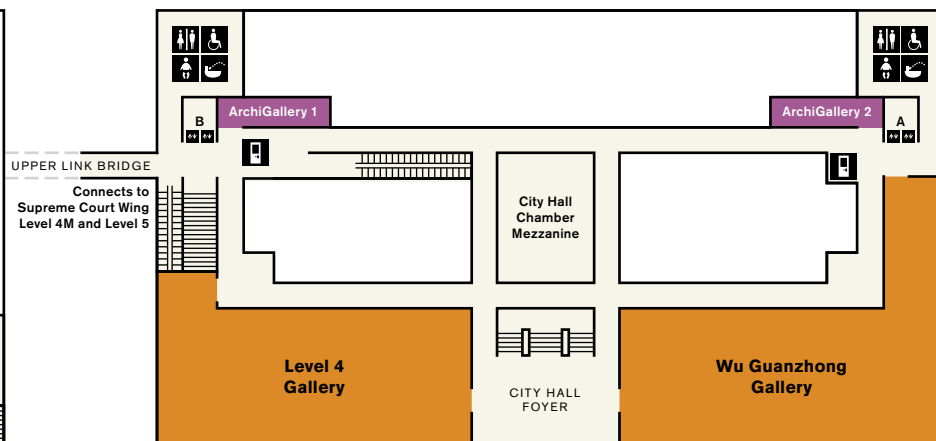
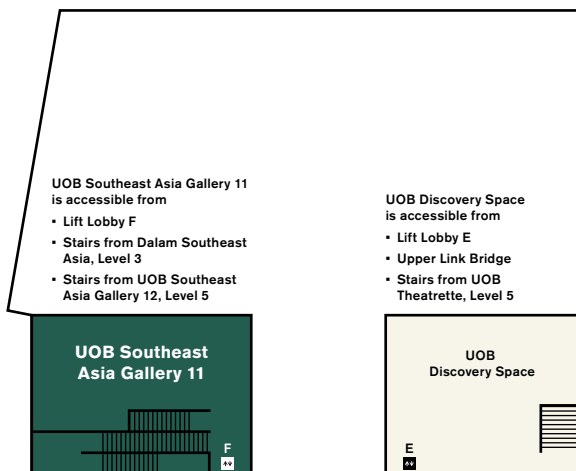
STRATEGIC
PARTNER



Diplomacy and Desire: Basoeeki Abdullah in Singapore

Supreme Court Wing, Level 3, UOB Southeast
Asia Gallery, Dalem Southeast Asia

Diplomacy and Desire: Basoeeki Abdullah in Singapore is an exhibition of artworks by the Indonesian painter Basoeeki Abdullah (1915–1993) who is known for his paintings of stalwart statesmen and attractive women. The highlights of the exhibition are two paintings that the artist gifted to Singapore in 1959 and 1981.



..... SUPREME COURT WING

..... CITY HALL WING



Fernando Zóbel: Order is Essential

City Hall Wing, Level 4,
Wu Guanzhong Gallery
and Level 4 Gallery

Fernando Zóbel
Public Tour
English Thu–Sun 11am
Mandarin Sat–Sun 2pm



Explore Singapore's first solo exhibition on Fernando Zóbel, a transcontinental artist, thinker and art patron who shaped a language in international abstraction and instilled the vital beauty of order in the unpredictable creative process.

The exhibition is an iteration expanding on *Zóbel: The Future of the Past*, an exhibition held at the Museo Nacional del Prado, Madrid, Spain (2022) and Ayala Museum, Manila, Philippines (2024).



**Listening to Architecture:
The Gallery's Histories and Transformations**

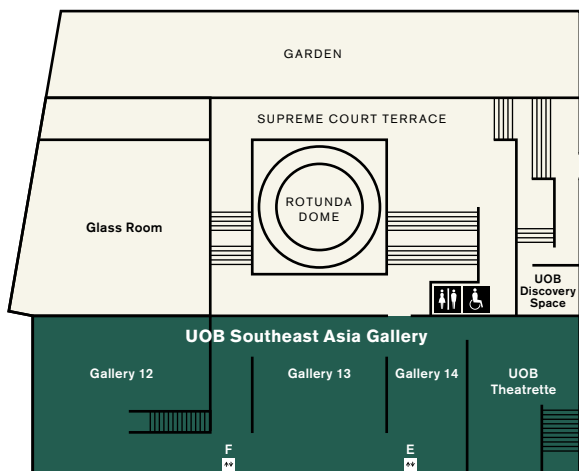
City Hall Wing, Level 4,
ArchiGallery

Listening to Architecture traces the journey of the City Hall and former Supreme Court buildings through a multi-sensory immersive experience, from the origins of their sites to their dramatic transformation into National Gallery Singapore.

5 & 4M

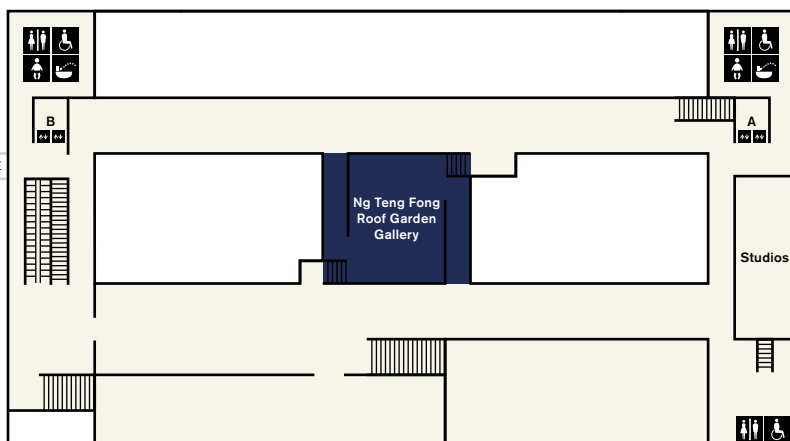
Lift
 Restroom
 Baby changing room
 Accessible restroom
 Drinking fountain
 Self-service kiosk

Between Declarations and Dreams
GLISTEN



UPPER LINK BRIDGE

Connects to
City Hall Wing
Level 4



..... SUPREME COURT WING

..... CITY HALL WING



Between Declarations and Dreams: *Art of Southeast Asia Since the 19th Century*

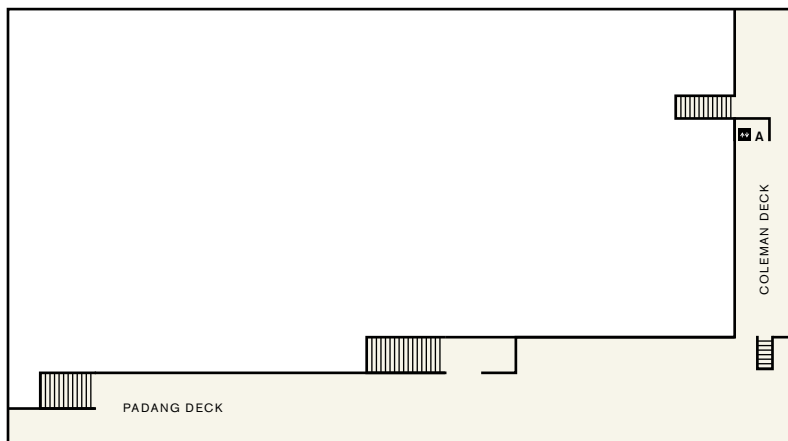
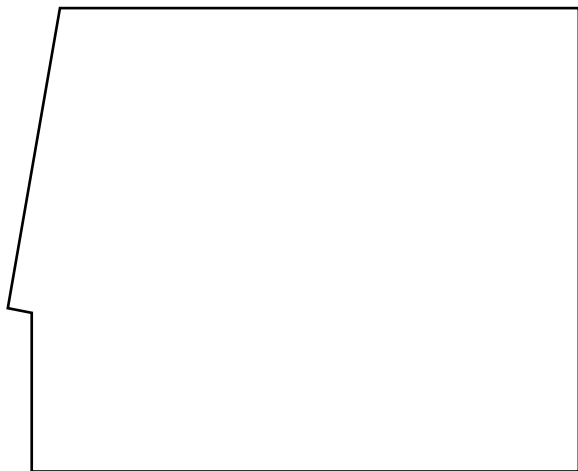
Supreme Court Wing,
Levels 3–5, UOB Southeast
Asia Gallery

In this exhibition, Southeast Asian art history is characterised by a continuous encounter with the new, as the region's artists reinvented vernacular expressions and aesthetics.

See Apinan Poshyananda's pathbreaking video installation, *How to Explain Art to a Bangkok Cock* (above), and Edgar Talusan Fernandez's *Ang Tao* in **UOB Southeast Asia Galleries 12 and 9**, as well as new displays in galleries 1, 2, 5, 8 and 11.

UOB Southeast Asia Gallery
Highlights Tour
 English Thu–Sun 2pm
 Mandarin Sat–Sun 4pm

The UOB Southeast Asia Gallery is made possible with the support of UOB.



CITY HALL WING

GALLERY ETIQUETTE



Food and drinks are not permitted in the galleries and public spaces.



No flash photography or videography in the galleries. The use of selfie sticks, tripods and lighting equipment is not permitted in the galleries.



Please do not touch the artworks. Even clean hands can damage surfaces.



Large bags and bulky items including umbrellas should be stored in lockers located at City Hall Wing, Level B1.



Children must be accompanied by an adult at all times in the Gallery.



Pencil sketching is permitted in the galleries with sketchbooks no larger than 22 × 28cm.



Charcoal, pastel, permanent markers, watercolour and oil paint are not permitted.

Image credits

Level 5 & 4M

(Middle) Apinan Poshyananda. *How to Explain Art to a Bangkok Cock*. 1985, reconstructed 2019. Painted crates and LCD monitors, 270 × 360 × 50 cm. Collection of National Gallery Singapore.

(Right) Edgar 'Egai' Talusan Fernandez. *Ang Tao*. 1978, recreated 2019. Plaster and canvas. Collection of National Gallery Singapore.

Level 3

(Left) Itakulla Kanae. *Woman in a Red Dress*. 1929. Oil on canvas, 116 × 80.3 cm. Collection of Matsudo City Board of Education.

(Middle-left) Amrita Sher-Gil. *Untitled* (Woman Wearing Shawl). 1932. Oil on canvas, 42 × 33 cm. Collection of The Dabriwala Family.

Level 2

(Right) Tchang Ju Chi. Detail of *Self-Portrait*. 1939. Oil on canvas, 62 × 49 cm. Gift of Chang Si Fun (Shewin Chang), daughter of the artist. Collection of National Gallery Singapore.

Must-Sees

(Left) Raden Saleh. Detail of *Boschbrand* (Forest Fire). 1849. Oil on canvas, 300 × 396 cm. Collection of National Gallery Singapore. This work has been adopted by Yong Hon Kong Foundation.

(Middle) Lee Boon Ngan. *Singapore Breakfast*. 1973. Oil on paper, 37.6 × 47.7 cm. Collection of National Gallery Singapore.

Tours

We're always adding new tours held in conjunction with ongoing exhibitions. Please check our website for the latest tour information.



SCAN FOR
LATEST INFO



DAILY TOURS

Explore the rich history of our buildings and collections by joining one of our guided tours led by trained docents. Tours last approximately 60 minutes, unless stated otherwise.

To reserve a slot, proceed to our Tours & Programmes counter (City Hall Wing, Level 1) or Visitor Services counter (Padang Atrium, Level 1) at least 30 minutes before the tour starts. Limited slots are available on a first-come, first-served basis. Tour participants should purchase a pass before joining a tour, with the exception of the Building Highlights Tour, which does not require any passes.

BUILDING HIGHLIGHTS

English Thu–Sun 10.30am |
Mandarin Sat–Sun 11.30am |
FREE! No pass required,
on-site registration required

Learn more about the national monuments—City Hall and the former Supreme Court—which have stood witness to many of Singapore's historic moments, and the decade-long renovation that united and transformed these majestic buildings into a home for the arts.

Latest information on other various exhibition tours is available on the map and on our website. The Gallery reserves the right to cancel tours without prior notice.

HIGHLIGHTS OF THE GALLERY

English Mon–Wed 3pm, Mon–Fri
11am | Mandarin Sat–Sun 11am |
Japanese 1st and 3rd Thu 1.30pm |
General Admission Pass required,
to be purchased separately

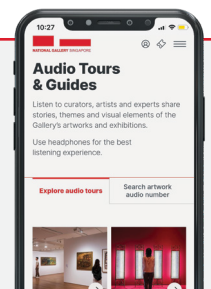
Get a glimpse of the best that the Gallery has to offer on this sweeping tour. Our docents will introduce you to key architectural features of our historic buildings, as well as selected masterpieces from our exhibitions on the art of Singapore and Southeast Asia.

AUDIO TOURS & GUIDES

Listen to curators, artists and experts as they share stories, themes and visual elements of the Gallery's artworks and exhibitions.



SCAN TO
LISTEN



SPECIAL TOURS



BACK-OF-HOUSE TOUR:

“FORMER SUPREME COURT: UNSEEN, UNHEARD”

Mandarin | Sat | 2.30pm

English | Sun | 4.30pm

Standard \$40, Local \$25 | Tickets include admission to
General Admission exhibition spaces | 20% off for Gallery Insiders

This 90-minute tour offers a glimpse into restricted areas of the former Supreme Court, which are usually out of bounds to the public. Go behind the scenes and find out more about courtroom proceedings and the experience of persons on trial.

THE TOUR IS NOT SUITABLE FOR VISITORS BELOW THE AGE OF 13 AND VISITORS WITH LIMITED MOBILITY. PLEASE WEAR COMFORTABLE FOOTWEAR AND ATTIRE.

GROUP TOURS

We provide a variety of group tour options upon request. For more information, please email GroupEnquiries@nationalgallery.sg.

VENUE RENTAL & SHOOTS

Blending rich history with exciting modernity, the Gallery's unique and timeless spaces are ideal for hosting events and shooting memorable photos and videos. For more information, please visit nationalgallery.sg/venue-rental.

Activities

Special tours, art talks, workshops, film screenings and music performances are held regularly at the Gallery. Scan the QR code to sign up!



SCAN TO
SIGN UP



SCAN TO
LEARN MORE

6TH PAINTING WITH LIGHT: FESTIVAL OF INTERNATIONAL FILMS ON ART 4–14 Sep | Various venues | Ticketed and free admission

Dedicated to the study and showcase of the moving image, **Painting with Light** is a film festival that presents artist films, documentaries on art, arthouse cinema and restored classics, which mark important moments in art history. The festival's special focus on artmaking in Southeast Asia is evident in a substantial selection of works from the region, including titles newly commissioned and restored by the Gallery, designed to create dialogue between the moving image art of Southeast Asia and the world.

The 6th edition of the festival will return in a biennial format, featuring premieres in festival sections that spotlight seminal developments in art history, pressing social justice concerns of the day, as well as new commissions—an expanded cinema project by Singapore artists Mark Chua and Lam Li Shuen, and a 4K restoration of *Footages* (1978) by Philippine artist Pandy Aviado. The selection will also include programme responses to the *Fernando Zóbel* and *Singapore Stories* exhibitions, as well as short films on the stories of our region from emerging and mid-career filmmakers in the UOB Southeast Asia Gallery Theatre. Audiences can also look forward to a festival lounge where industry and the public alike can mingle over drinks and light bites, while enjoying free screenings that celebrate the visual poetry of moving image art in a space meant for exchange.

Watch for tickets online.

Still from *Queen's Palace* (2024) directed by Snow Hnin Ei Hlaing.



THE HONEST GUIDE TO SEEING ART: JOBS AT THE MUSEUM

Ever wonder who makes the art and exhibitions in a museum happen?

This August, The Honest Guide to Seeing Art is back for round three—this time nosing into the “whos” in a museum. And no, we are not just talking about curators. Go behind the scenes with honest, no-fluff stories from pros at the Gallery and the National Asian Culture Center (South Korea), and discover what it really takes to bring exhibitions to life.

Available from August—grab your free copy at our information counters! Missed the earlier ones? Issues 1 and 2 are still available, so you can complete the set!



SCAN TO
LEARN MORE

PERFORMANCE RESPONSE TO GLISTEN

Sun 13 Jul | 6.30pm | City Hall Wing, Level 5,
Ng Teng Fong Roof Garden Gallery

Join us for a closing performance for *GLISTEN*, the rooftop commission by Lisa Reihana and her collaborators. Attendees will be invited to participate in a ritual gathering alongside the artwork, accompanied by a Cook Island waiata and a choreographed dance.

Mahia Jermaine Dean. From a wananga series at Matua Onamata, Muriwai, Aotearoa NZ.

GalleryKids!

Enjoy programmes specially designed to develop curiosity, imagination and the appreciation of art in children. Scan the QR code for the latest programme information.



SCAN FOR
LATEST INFO

KIDS' PROGRAMMES AND ACTIVITIES

City Hall Wing, Level 1, Keppel Centre for Art Education



Inspired by the theme **Art & Wonder**, Keppel Centre for Art Education features multiple educational zones in which families and children can experience the world of art through play, creativity and imagination.

MONTHLY PROGRAMMES



GalleryToddlers!

Want to engage your toddler in the Gallery but don't know where to start? GalleryToddlers! invites children and parents to take part in sensory play inspired by different artworks each month!

SCHOOL HOLIDAY PROGRAMMES



Art Alive!

Immerse yourselves in the world of art and let your imagination soar with Art Alive! This programme offers families a fun and exciting journey of exploration, using drama and storytelling to bring art to life.



ARTventure Camp

At our thematic ARTventure Camps, participants will dive into exciting hands-on activities, interactive gallery tours and fun collaborative projects—all designed to inspire creativity and imagination!



Free entry for all | 31 May 2025 to 29 March 2026

The highly anticipated fifth edition of the Gallery Children's Biennale coincides with the Gallery's 10th anniversary. Through the overarching theme of **Tomorrow We'll Be...**, this Biennale invites children and families to imagine the possibilities of their future by exploring the four core values of **Joy, Kindness, Dream and Love**.

Look forward to eight multi-sensorial artwork installations by local and international artists such as **Fern Wong, Wyn-Lyn Tan, Vicente Delgado, Co2_karbondioksida, Souliya Phoumivong** and **Hiromi Tango**. The artists' responses to the theme and core values are expressed through unique and site-specific installations throughout the Gallery.

Enjoy free admission to the Biennale and take part in a series of fun and engaging programmes throughout its run!

The Gallery Children's Biennale has been one of National Gallery Singapore's signature events since 2017, embodying the Gallery's commitment to inspire young and curious minds with art. It aims to explore the many ways that children can learn and play while engaging more with the world around them.

Development Partner

**Better
Everyday**
By Tote Board

Matched by

**CULTURAL
MATCHING
FUND**

Major Partner

OUE

Shop & Dine

The Gallery has a suite of specially curated dining and retail spaces—including a Michelin-starred restaurant—that offer a variety of cuisines and unique museum merchandise.



Reservations are highly encouraged



SCAN FOR
MORE INFO



The Gallery Store by ABRY

Books and museum gifts

City Hall Wing, Level 1

Daily 10am–7pm



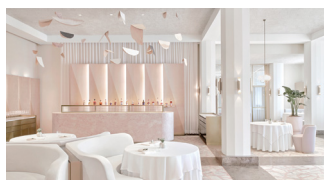
National Kitchen by Violet Oon Singapore

Singaporean restaurant, \$\$

City Hall Wing, Level 2

Tel: 9834 9935

Lunch and Dinner: Daily noon–3pm,
6–10.30pm | High Tea: Fri–Sun,
public holidays 3–5pm



Odette

Modern French restaurant, \$\$\$\$

Supreme Court Wing, Level 1

Tel: 6385 0498

Tue–Sat noon–1.15pm (last seating),
Mon–Sat 6.30–8pm (last seating),
Closed on Sun and public holidays



(Coming Soon) Gilmore & Damian D'Silva

Singaporean & Eurasian Heritage
restaurant, \$\$\$

Supreme Court Wing, Level 1

Daily 11.30am–10pm



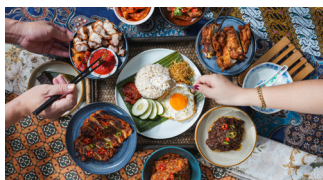
The Great Mischief

Spanish café, Muslim friendly, \$\$

City Hall Wing, Level 1

Tel: 8721 3150

Daily 10am–9.30pm



(Coming Soon) Rempapa

All-day Singaporean café, \$\$

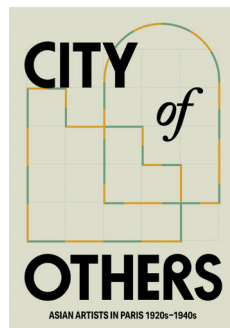
Supreme Court Wing, Level 1

Daily 9am–7pm

GALLERY PUBLICATIONS

Explore the art of Singapore and Southeast Asia through our illustrated publications. Our growing range includes exhibition catalogues, research titles and children's books.

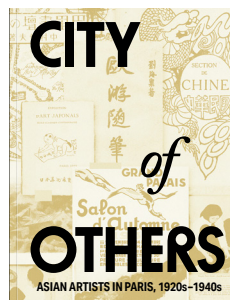
Check them out at **The Gallery Store by ABRY**
or online at **abry.global**.



CITY OF OTHERS: ASIAN ARTISTS IN PARIS, 1920s–1940s

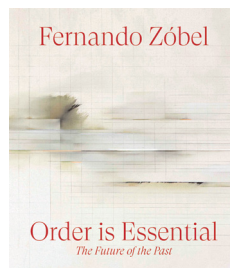
Exhibition concept booklet | 52 pages |
Paperback | \$14 (including GST)

This illustrated guide presents key highlights
of the exhibition and essential curatorial texts
in a handy format.



Exhibition catalogue | 396 pages |
Paperback | \$75 (including GST)

With over 300 full-colour artwork and
archival images, curatorial essays as well
as translations of primary sources—such as
artists' letters and exhibition texts from the
period—the catalogue is an exciting source
of new comparative research on the lives
and works of Asian artists in Paris.



FERNANDO ZÓBEL:
ORDER IS ESSENTIAL
164 pages | Paperback |
\$60 (including GST)

Fernando Zóbel: Order is Essential covers
the full scope of Fernando Zóbel's oeuvre.
The catalogue features five curatorial
essays offering new insights into Zóbel's
transnational practice. The full-colour
plates are broken into four geographical
sections, New England, Manila, Madrid
and Cuenca, and trace the evolution of
Zóbel's work and influences.

Admissions

Purchase your Gallery Passes online or on-site from our self-service kiosks. Check out our latest promotions and rates at nationalgallery.sg/admissions.



SCAN TO PURCHASE

GALLERY PASS TYPE	STANDARD	LOCAL*
General Admission + Free Guided Tours Admits one to these exhibitions: <ul style="list-style-type: none">▪ <i>Singapore Stories</i>▪ <i>Between Declarations and Dreams</i>▪ <i>Fernando Zóbel</i>▪ <i>Diplomacy and Desire</i>▪ <i>Tchang Ju Chi</i> (Opens 18 Jul)	\$20	FREE
Special Exhibition Admits one to <i>City of Others</i> (Closes 17 Aug)	\$25	\$15
All Access General Admission + Special Exhibition	\$30	REFER TO FOOTNOTE^

FREE ADMISSION FOR:

- Gallery Insiders
- Children aged 6 and below
- Local/locally based students and teachers*
- Persons with disabilities (PWD) and their caregivers

CONCESSION AT \$5 OFF FOR:

- Children aged 7–12
- Seniors aged 60 and above
- Full-time National Servicemen (NSFs) excluding foreign personnel
- Overseas students and teachers*

* Rate for locals apply to Singapore Citizens and Permanent Residents.
^ For locals, purchasing a Special Exhibition pass automatically upgrades you to an All Access pass, granting entry to all galleries.
From qualifying institutions only. Valid identification is required.

FREE AND EASY ART ENCOUNTERS FOR ALL

No Gallery Pass is required for:


- **City Hall Wing, Level B1, The Ngee Ann Kongsi Concourse Gallery**
Dalam Collection: *Where Ink Tides Meet*
- **City Hall Wing, Level 1, Keppel Centre for Art Education**
- **City Hall Wing, Level 4, ArchiGallery**
Listening to Architecture: The Gallery's Histories and Transformations
- **City Hall Wing, Level 5, Ng Teng Fong Roof Garden Gallery**
Ng Teng Fong Roof Garden Commission: *GLISTEN* by Lisa Reihana (Closes 13 Jul)
- **City Hall Wing, Level 6, Padang and Coleman Deck**
- **Supreme Court Wing, Level 3, Chief Justice's Chamber & Office**
Laws of Our Land: Foundations of a New Nation
- **Gallery Children's Biennale 2025, multiple locations**

Membership


Enjoy admission privileges, free parking and discounts on dining and shopping. Join a community of art enthusiasts and elevate your art experience.



SCAN TO SIGN UP



GALLERY EXPLORER



GALLERY INSIDER

Membership Type

EXPLORER

INSIDER

FREE

STANDARD: \$35 / \$30^
LOCAL*: \$20 / \$15^

\$35
worth of vouchers upon sign-up!

Free parking daily	1 hour	2 hours
Stay updated on seasonal offers	✓	✓
Unlimited free access to all exhibitions		✓
Pre-opening and after hours exhibition viewing		✓
Members-only events		✓
Shopping and dining discounts		Up to 20%
Early bird access to exclusive offers		✓
Earn points and redeem for rewards		✓

To find out more, please visit nationalgallery.sg/membership.

* Rate for locals apply to Singapore Citizens and Permanent Residents.
^ Concessions are available for students, children aged 7–12 and seniors aged 60 and above. Offers are accurate at time of print.

Support the Gallery

As a registered Charity and an Institute of Public Character, National Gallery Singapore relies on your support to build collections, engage in research, develop programmes and bring art to everyone.



SCAN TO
DONATE

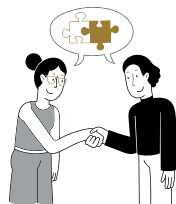


Be our Patron

Be part of an art-loving community and enjoy exclusive privileges including tours, experiences and behind-the-scenes access.



SCAN TO BE A
PATRON TODAY



Be our Corporate Partner

Corporates can support us as an Exhibition or Programme Partner. The Gallery offers bespoke partnership opportunities to increase brand awareness while giving back to the community as well as engaging clients with unique art experiences.



Community, Education and Exhibition Partnerships

Generate new knowledge in the visual arts and engage underserved communities with impactful programmes. Help champion a thoughtful, creative and inclusive society.



Donate a Work of Art

Join other forward-thinking donors and gift an artwork, helping us to build a significant national collection, enrich our cultural heritage and ensure its enduring legacy for future generations.



Make a Bequest

Celebrate a loved one by donating in memory of them or consider leaving a legacy gift to the Gallery in your will. Your generosity will be appreciated for generations to come.

GALLERY GALA 2025— A DECADE OF IMAGINATION

Sat 13 Sep | 6pm |

National Gallery Singapore

Join us in celebrating a decade of art and shaping the cultural future of Southeast Asia.



SCAN TO
REGISTER



National Gallery Singapore would like to thank our corporate partners for their generous support.

Development Partner



Founding Partners



Partner



Supported by



For details on partnership opportunities, please visit nationalgallery.sg/join-give/support-the-gallery or contact us at SupportUs@nationalgallery.sg.

All gifts made are eligible for tax deductions in accordance with IRAS guidelines.

nationalgallery.sg

6271 7000

info@nationalgallery.sg

**1 St Andrew's Road
Singapore 178957**

Daily 10am–7pm



NationalGallerySingapore



NatGallerySG



新加坡国家美术馆

Copyright in the content in this brochure may also reside in persons and entities other than, and in addition to, the Gallery. The Gallery seeks to share our artworks with as many people as we can. We are fully committed to respecting the intellectual property rights of others and always use our best efforts to obtain permission for artwork images used. Please contact us should you have any queries about this. Unless otherwise mentioned, all artwork images have been provided through the courtesy of National Heritage Board, Singapore and artworks featured are from the collection of National Gallery Singapore. The Gallery Guide is published by National Gallery Singapore. All rights reserved. Materials in this publication may not be reproduced in part or in whole without written consent of the Gallery. Every effort has been made to ensure the accuracy of information within this publication. However, changes are sometimes unavoidable and the Gallery reserves the right to make modifications to the programmes and ticketing policy without prior notice. Please visit nationalgallery.sg for the most updated information. The views and opinions expressed by speakers, facilitators and docents at the workshops and tours do not necessarily represent the position of the Gallery. Published in June 2025. All information is correct at time of print.

PLEASE RETURN THIS BROCHURE FOR RECYCLING