

For immediate release

Media Release

**National Gallery Singapore announces two special exhibitions
on Chua Ek Kay and Wu Guanzhong**

Singapore, 12 November 2015 – National Gallery Singapore is proud to announce two special exhibitions alongside its Opening Celebrations, featuring the works of Singaporean artist Chua Ek Kay and Chinese artist Wu Guanzhong. The exhibitions will showcase the important contributions of both artists – in integrating Chinese and Western art traditions through their innovative practice.

'After the Rain': A reflection of Chua Ek Kay's artistic journey

'After the Rain' presents the achievements of Chua Ek Kay and commemorates the significant donation made by his family to the National Collection. It examines his artistic development through his interests in calligraphy and poetry, the Shanghai School of ink painting, and Western art. The exhibition will examine the important themes that Chua continuously revisited throughout his career.

The Gallery's presentation will be the first historical survey of the artist's career by a national museum, covering his most important works and artistic interests, including the Singapore cityscape and reflections on nature.

Some of Chua's works that visitors can look forward to when the exhibition opens on 26 November include 'After the Rain (2004)', 'Midnight Lotus (2002)', 'Dream of Borobudur (1996)', 'My Haunt (1991)', 'An Intimate Space of Stillness (1995)' and 'Song of Cicada (1995)', just to name a few.



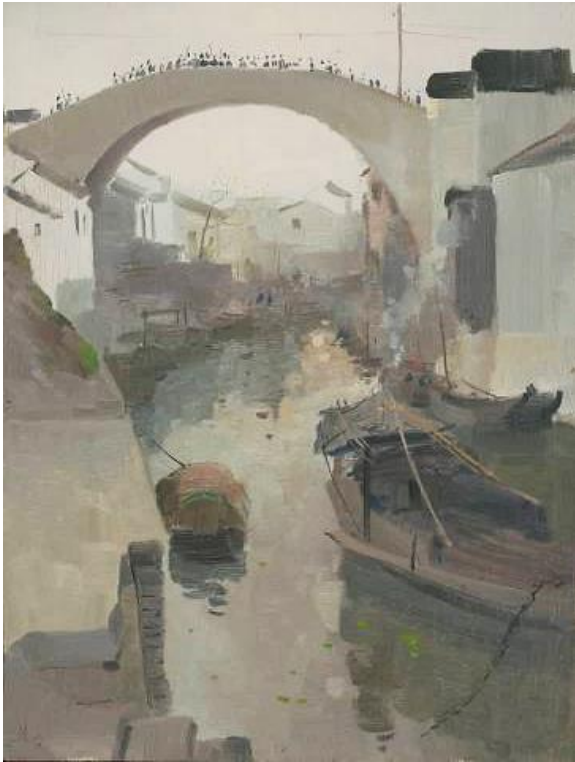
After the Rain 雨后
2004
Ink and colour on paper
244 x 120cm
Collection of Singapore Art Museum

'Beauty Beyond Form': Comprehensive insight into Wu's prolific career

Ink painting has been an important part of Singapore's art history. Through his paintings and writings, Wu Guanzhong has been a major advocate and forerunner of synthesising Chinese art and Western modernism.

'Wu Guanzhong: Beauty Beyond Form' celebrates the opening of the Wu Guanzhong Gallery at the National Gallery Singapore. The exhibition will showcase works donated by the artist and his family to the National Collection. Of the more than 80 artworks on display, 22 are works on loan from key arts institutions in China and Hong Kong – National Art Museum of China, China Art Museum, Shanghai, Hong Kong Museum of Art, Zhejiang Art Museum and Nanjing Museum. The exhibition – one of the most comprehensive in recent times – will feature both oil and ink paintings, many of which would be on display for the first time in Singapore.

Among Wu's renowned works on display come 26 November include 'Hometown Morning (1960)', 'A Mountain Village of Guilin (1973)', 'The Hometown of Luxun (1976)', 'Mulberry Grove (1981)', 'Two Swallows (1981)' and 'Delicate Reflection (2009)' among many others.



Hometown Morning

故乡之晨

1960

Oil on board

61.4 x 45.9 cm

Gift of the artist

Collection of National Gallery

Singapore

"It is an honour to present special exhibitions dedicated to Chua Ek Kay and Wu Guanzhong. They are, without a doubt, amongst the most innovative artists of their time. Through their individual practice, they have integrated both Chinese and Western art traditions in distinctive ways. We hope that these exhibitions will further enhance public interest and appreciation of modern ink painting." said Mr Low Sze Wee, Director of Curatorial and Collections, National Gallery Singapore.

National Gallery Singapore is dedicated to strengthening and expanding cultural exchange through its programming and partnerships. Through collaboration with international institutions, the Gallery provides opportunities for visitors to better explore the art, heritage, and history of Southeast Asia. To date, the Gallery has entered into a number of important Memorandum of Understanding partnerships with leading international museums like the Tropenmuseum (Netherlands), Fukuoka Asian Art Museum (Japan), National Art Museum of China and the Vietnam Fine Arts Museum. These have led to fruitful long-term collaborations in the areas of artwork loans and research.

All visitors will enjoy complimentary entry to the special exhibitions, during the National Gallery Singapore's opening celebrations from 24 November to 6 December 2015. For more information about the upcoming activities and registration requirements, please visit our website.

- End -

ABOUT NATIONAL GALLERY SINGAPORE

National Gallery Singapore is a new visual arts institution which oversees the largest public collection of modern art of Singapore and Southeast Asia. The Gallery is dedicated to collaborative research, education and exhibitions, highlighting the importance of modern art in Southeast Asia in a global context. The Gallery also provides a unique visitor experience through its collections and innovative programming, positioning Singapore as a regional and international hub for the visual arts.

Situated in the heart of the Civic District, the National Gallery Singapore has been beautifully restored and transformed from the former Supreme Court and City Hall buildings – two important heritage buildings of Singapore's nationhood – into an exciting new visual arts venue. Opening in November 2015, the Gallery will be a leading civic and cultural destination established for the enrichment, enjoyment and engagement of Singapore residents and visitors from all over the world. Information on the National Gallery is available at www.nationalgallery.sg.

For media enquiries, please contact:

Lucie Sherwood

Sutton, Hong Kong

Tel: +852 9682 5273

Email: lucie@suttonpr.com

Jessica Tedd

Sutton, Hong Kong

Tel: +852 9160 6976

Email: Jessica@suttonpr.com

Elaine Sng

Assistant Director (Media & Communications)

National Gallery Singapore

Tel: 6697 9207

Email: elaine.sng@nationalgallery.sg