

For immediate release

Media Release

President Officiates National Gallery Singapore's Grand Opening
Art carnival and façade show draws thousands

Singapore, 27 November 2015 – Singapore's President Tony Tan Keng Yam today unveiled a commemorative plaque at the National Gallery Singapore and inaugurated the art carnival *Share the Hope* as part of the Gallery's grand opening.

Visitors can engage in immersive art-related programmes at the massive art carnival as an extension of the Gallery experience from 27 to 29 November. Among the highlights is the *Share the Hope Façade Show* exclusively sponsored by Cartier. The show is a stunning eight-minute display of light and sound set against the Gallery's building exterior and features artworks such as Cheong Soo Pieng's *Drying Salted Fish* and Chua Mia Tee's *National Language Class*.

The *Share the Hope Façade Show* will run for three nights only from 27 – 29 November, with performances at 8pm, 9pm and 10pm.

Prior to attending the art carnival, President Tan also launched the Art Connector, a 290-metre permanent sheltered walkway linking City Hall MRT to the Gallery's entrance at Coleman Street. The Art Connector is part of the Portraits of the People project which commenced in November 2014. The project rallied the public to contribute their self-portraits and personal reflections on the National Pledge. The selection of Singaporeans' self-sketches were then curated and etched onto copper panels displayed on raised platforms within the walkway, rounding up the SG50 celebrations.

Aside from the free admission to the exhibitions at the two permanent galleries – the DBS Singapore Gallery, the UOB Southeast Asia Gallery, and the special exhibitions of ink masters Wu Guanzhong and Chua Ek Kay, visitors can also take part in a diverse array of free activities that includes art forums, film screenings, music and dance performances as well as art workshops. All visitors will enjoy free entry to National Gallery Singapore, its

exhibitions and the opening celebrations until 6 December 2015. Entrance to the Gallery remains free for Singapore Citizens and Permanent Residents after 6 December, except for special exhibitions.

- End -

ABOUT NATIONAL GALLERY SINGAPORE

National Gallery Singapore is a new visual arts institution which oversees the largest public collection of modern art of Singapore and Southeast Asia. The Gallery is dedicated to collaborative research, education and exhibitions, highlighting the importance of modern art in Southeast Asia in a global context. The Gallery also provides a unique visitor experience through its art presentations and innovative programming, positioning Singapore as a regional and international hub for the visual arts.

Situated in the heart of the Civic District, the National Gallery Singapore has been beautifully restored and transformed from the former Supreme Court and City Hall buildings – two important heritage buildings of Singapore’s nationhood – into an exciting new visual arts venue. The Gallery will be a leading civic and cultural destination established for the enrichment, enjoyment and engagement of Singapore residents and visitors from all over the world. Information on the National Gallery is available at www.nationalgallery.sg.

For media enquiries, please contact:

Beverly Tan

Burson-Marsteller for National Gallery Singapore

Tel: 6671 3277

Email: Beverly.tan@bm.com

Michelle Chua

National Gallery Singapore

Tel: 6697 9132

Email: michelle.chua@nationalgallery.sg

Annex A

Selection of Artworks featured in the Façade Show



Chen Wen Hsi
Hérons
1990
Chinese ink and colour on paper
123 x 245 cm
Collection of National Gallery Singapore.
Image courtesy of National Heritage Board.



Cheong Soo Pieng
Drying Salted Fish
1978
Chinese ink and colour on cloth
55.5 x 88.5 cm
Collection of National Gallery Singapore.
Image courtesy of National Heritage Board.
Gift of Trans Island Bus Services Ltd.



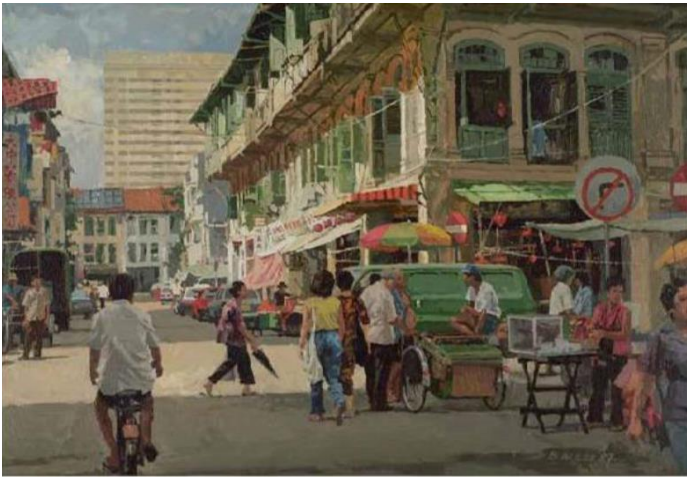
Chua Mia Tee
National Language Class
1959
Oil On Canvas
112 x 153 cm
Collection of National Gallery Singapore.
Image courtesy of National Heritage Board.
Donated by Equator Art Society.



Georgette Chen
Satay Boy
1964
Oil on Canvas
161 x 135 cm
Collection of National Gallery Singapore.
Image courtesy of National Heritage Board.



Georgette Chen
Singapore Waterfront
c. 1963
Oil on Canvas
50 x 61 cm
Collection of National Gallery Singapore.
Image courtesy of National Heritage Board.
Donated by the Lee Foundation.



Lee Boon Wang
Street Scene
1987
Oil on Canvas
59.5 X 87.5 cm
Collection of National Gallery Singapore.
Image courtesy of National Heritage Board.



Liu Kang
Life by the River
1975
Oil on canvas
126 x 203 cm
Collection of National Gallery Singapore.
Gift of Liu Kang.



Chua Mia Tee
Epic Poem of Malaya
1955
Oil on canvas
107.6 x 125.5 cm
Collection of National Gallery Singapore.
Image Courtesy of National Heritage Board.



Chen Chong Swee
Returning from the Sea
1972
Watercolour on paper
90.7 x 128.2 cm
Collection of National Gallery Singapore.
Image courtesy of National Heritage Board.
Donated by Mr Kwok Koon Hong.

For hi-res images of any of these artworks in the collection of National Gallery Singapore, please contact Inge Giesbers, Manager (Rights and Reproductions), Email: Inge.Giesbers@nationalgallery.sg

Annex B: Credit Lines

Video Projection Director: Milosh Luczynski. An original commission by National Gallery Singapore

Video Projection Technical Director 3D Supervisor: Stephan Beve

Video Projection Production Manager: Luz Mando

Technical Production Team: Ctrl Fre@k

Lighting Designer: Richard Neville

Composer & Music Supervisor: David Shrubsole

Production Designer: Julio Himede

Associate Production Designer: Adrienn Lord

Writer: Jean Tay. An original commission by National Gallery Singapore

Choreographer: George Chan. An original commission by National Gallery Singapore

Costume Designer (for Principals): Goh Lai Chan

Line Producer: Grace Low

Festival Artistic Consultant for the Carnival: Darren Yap

Annex C:

<http://www.portraitsofthepeople.sg>

Portraits of the People

Portraits of the People is the National Gallery Singapore's community outreach programme to rally the public to contribute their self-portraits and personal reflections on the National Pledge. Similar to a unique thumbprint, these self-sketched portraits represent an enduring promise to build a happy and progressive Singapore. The collection of these self-portraits will be artistically curated and etched in copper throughout the Art Connector — a unique and lasting tribute to the diversity of our people, the bedrock of Singapore.

Submissions were made online and through travelling road shows held across more than 50 locations island-wide between November 2014 and June 2015. A collection of the submissions received are shared in our site's Gallery page.

The Art Connector

National Gallery Singapore celebrates Singapore's 50 years of independence with the Art Connector, a permanent and unique sheltered 290-metre walkway linking City Hall MRT to the Gallery's Coleman Street entrance.

A local creative team comprising of FARM Architects, artist Grace Tan and engineers conceptualised the design of the Art Connector — to celebrate our people who make the fabric of our society.

Inspired by the geographical elements of Singapore, the Art Connector echoes the geological foundation and the built environment of Singapore. Through a co-creative process, the Art Connector holistically incorporates the voices of our people through these self-sketches collected from Portraits of the People that are curated, etched into copper panels and displayed on raised platforms within the Art Connector.

In addition, the key values of the National Pledge are creatively interpreted by selected artists and developed into vibrant renderings that are woven into the Art Connector.

The completed Art Connector will be unveiled to the public in November 2015 with a capstone festive carnival on the Padang, rounding up the SG50 celebrations.