



NATIONAL GALLERY SINGAPORE



OCT-DEC
2025

GUIDE+ MAP

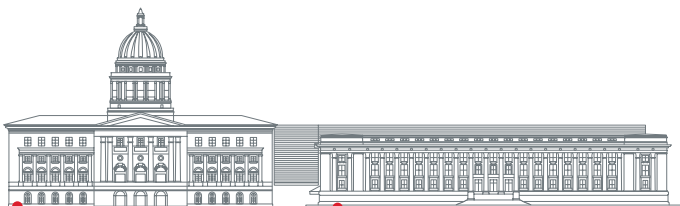


SCAN FOR
DIGITAL COPY



Welcome to National Gallery Singapore

National Gallery Singapore is celebrating its 10th anniversary this year as a leading visual arts institution and the largest modern and contemporary art museum in Southeast Asia. Housed in two national monuments, it stands as an iconic cultural landmark where architectural grandeur meets deep historical significance.



SUPREME COURT WING

- **Level 1:** *Angin Cloud* by Art Labor
- **Levels 3–5:** *Between Declarations & Dreams: Art of Southeast Asia Since the 19th Century*
- **Level 3:** *Dalam Southeast Asia: Diplomacy and Desire: Basoeki Abdullah in Singapore*
- **Level 3:** *Laws of Our Land: Foundations of a New Nation*

CITY HALL WING

- **Level B1:** *Dalam Collection: Where Ink Tides Meet*
- **Level 1:** *Eidolon* by Vong Phaophanit and Claire Oboussier
- **Level 2:** *Singapore Stories: Pathways and Detours in Art*
- **Level 2:** *Dalam Singapore: Tchang Ju Chi: Tireless Camel*
- **Level 3:** *Into the Modern: Impressionism from the Museum of Fine Arts, Boston*
- **Level 3:** *Not Mere Spectators: The Makings of Multicultural Singapore*
- **Level 4:** *Fernando Zóbel: Order is Essential*
- **Level 5:** Ng Teng Fong Roof Garden Commission: *Temple* by Tuan Andrew Nguyen

Need a guide?



Looking for an itinerary to guide your visit? Select from a range of Self-Guided Tours—whether you are visiting for the first time, looking for a tour of our iconic masterpieces or just here for the 'gram, there is something for everyone!



SCAN TO TRY

AN ACCESSIBLE EXPERIENCE FOR ALL

The Gallery is committed to creating an inclusive experience that can be enjoyed by visitors with access needs.



SCAN FOR ACCESS GUIDE

Located at City Hall Wing, Level B1, the **Calm Room** is a dedicated space where visitors can rest if they are feeling overstimulated or overwhelmed by their environment.



FREE WI-FI

Connect to our free visitor Wi-Fi: **"Gallery Visitors"**

PHOTOGRAPHY & RECORDINGS

Please note that photographs, video and audio recordings may be taken in and around our premises from time to time. By entering the Gallery, you consent to having any photographs or recordings taken of you used by the Gallery for publishing, marketing and other purposes. Please approach our Gallery staff should you have any concerns.

LEGEND

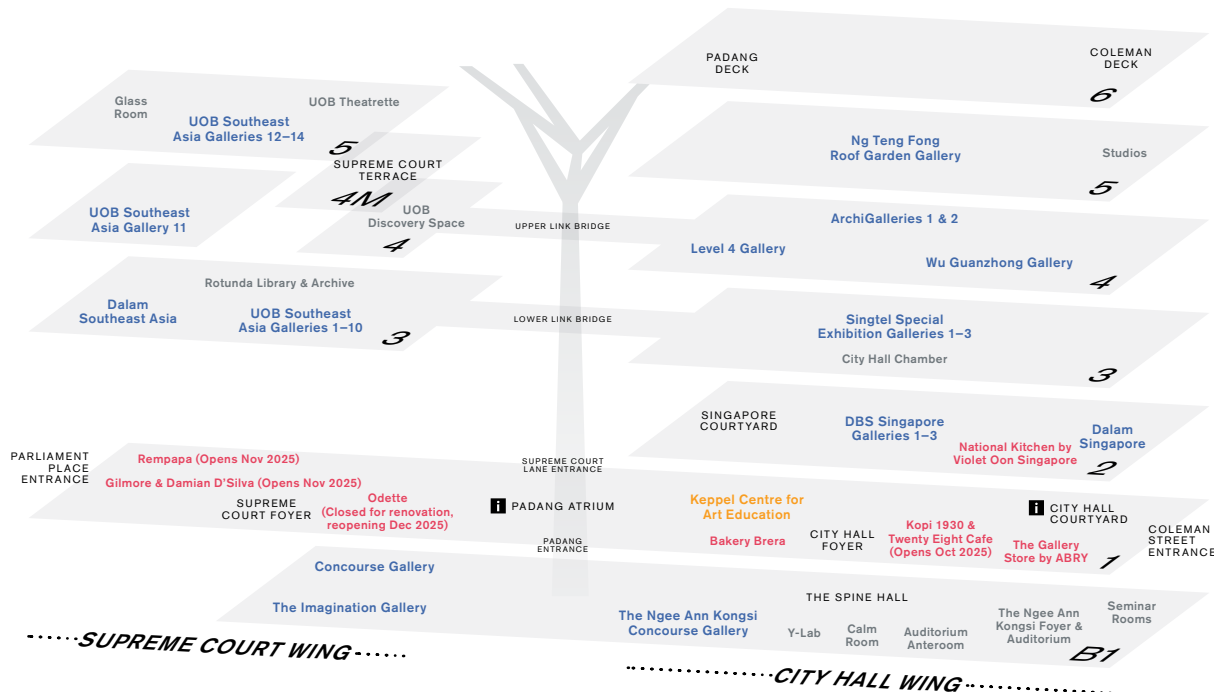
- Galleries
- Education
- Shop & Dine
- Museum Services and Special Facilities
- MUSEUM SPACES

i Available at Visitor Services

Level 1 Padang Atrium and
Level 1 City Hall Courtyard

- Gallery Passes
- Tours
- Lost & Found

Carparks at City Hall Wing,
Levels B2 and B3 accessible
via Lift Lobbies A and B only



Must-Sees!



Raden Saleh's *Boschbrand* (Forest Fire)

- Supreme Court Wing, Level 3,
UOB Southeast Asia Gallery 2

This monumental painting depicts wild animals chased by flames in a dense, elaborate composition. A year after it was gifted to his patron King Willem III of the Netherlands, Raden Saleh was awarded the title of "King's Painter."

This work has been adopted by Yong Hon Kong Foundation.



Lee Boon Ngan's *Singapore Breakfast*

- City Hall Wing, Level 2,
DBS Singapore Gallery 1

Painted in the 1970s yet instantly recognisable today, this still life oil painting captures the timeless charm of familiar breakfast staples that have nourished generations—two soft-boiled eggs, thick-cut bread, butter and coffee.

SELF-GUIDED TOUR

Catch eight iconic
and historically
significant artworks
on our must-see list!



SCAN TO
TRY NOW



For the latest information on
our exhibitions and festivals,
scan the QR code to visit
nationalgallery.sg/whats-on.





Lift



Restroom



Baby changing room



Accessible restroom



Drinking fountain



Information



Wheelchair loan



Self-service kiosk



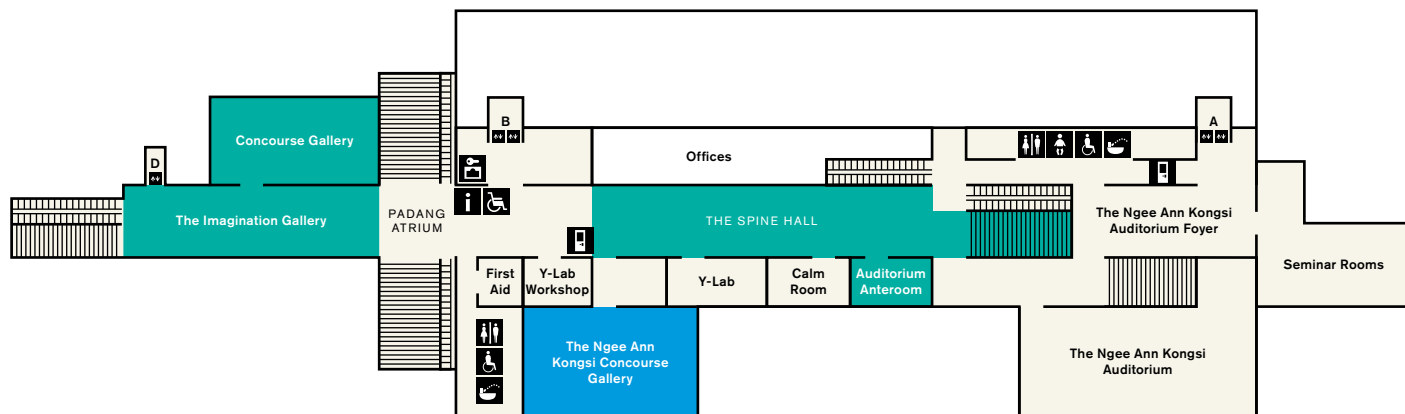
Locker



Gallery Children's Biennale



Where Ink Tides Meet



..... SUPREME COURT WING

..... CITY HALL WING



Gallery Children's Biennale 2025: Tomorrow We'll Be...

Various locations
within the Gallery
on Levels B1 and 1

The Gallery Children's Biennale (GCB) embodies the Gallery's commitment to inspire young and curious minds with art.

The fifth edition of GCB returns with the theme of **Tomorrow We'll Be...**, inviting children to reflect on the endless possibilities of their future by exploring four core values: **Joy, Kindness, Dream and Love**. Both children and adults alike can look forward to eight multi-sensorial artwork installations by local and international artists, as well as a series of fun and engaging programmes!

The Gallery Children's Biennale was made possible with the support of ToteBoard, Cultural Matching Fund and OUE.



FREE
FOR ALL



CLOSES
16 NOV

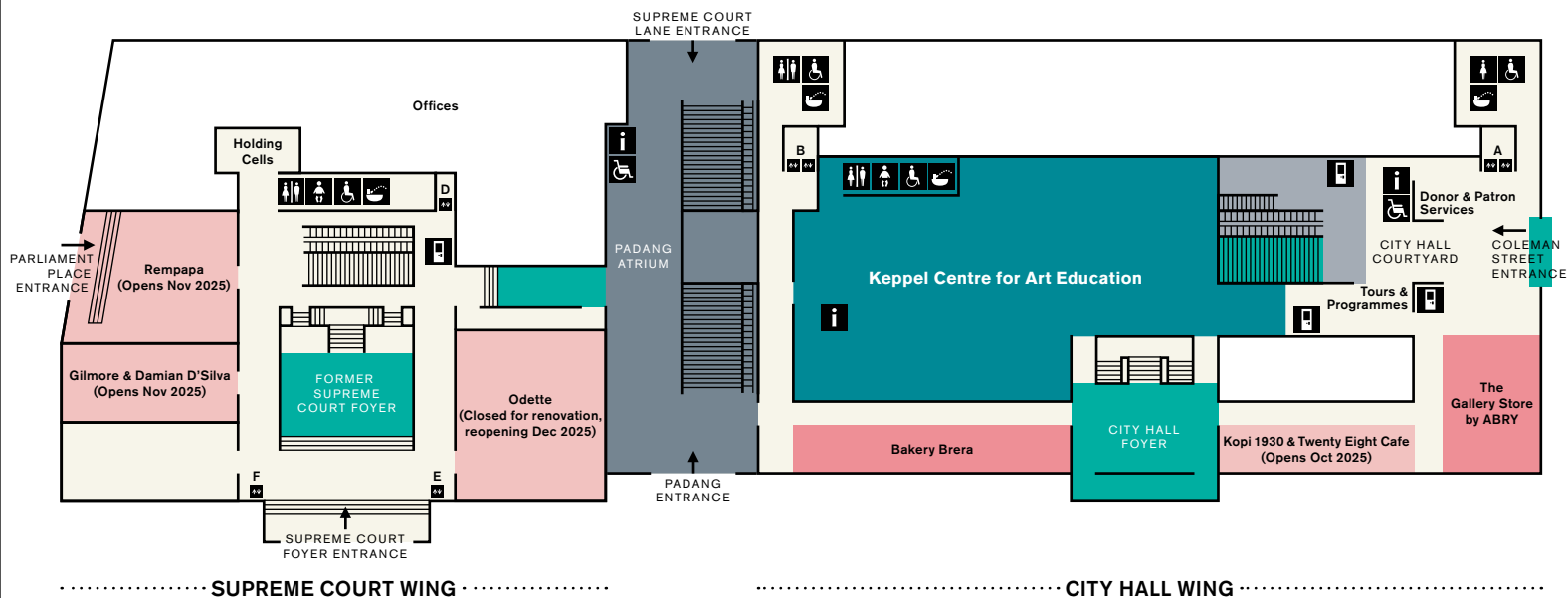
Dalam Collection:
Where Ink Tides Meet

City Hall Wing, Level B1,
The Ngee Ann Kongsi Concourse Gallery

Where Ink Tides Meet showcases over 50 new acquisitions and previously unseen works, emphasising the Gallery's growing ink collection and its ongoing commitment to the research and acquisition of ink art.

Where Ink Tides Meet Public Tour

English Sat–Sun 11.30am | Mandarin Sat–Sun 3pm



Angin Cloud by Art Labor

Padang Atrium

Angin Cloud, part of the Gallery's OUTBOUND series, imagines the rural industrialisation of the hill side from Vietnam's Central Highlands. Pairing Jrai wood sculptures and suspended pillars that recall farming structures for growing pepper vine, the installation references *angin*, a Jrai concept that revolves around the dynamic potential for change found in water and air.

CLOSES
30 NOV



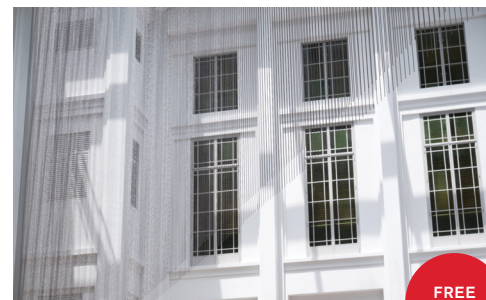
Keppel Centre for Art Education

City Hall Wing, Level 1

The Keppel Centre for Art Education aims to foster lifelong love for art in children with a fun learning experience for the entire family to enjoy. Inspired by the theme of **Art & Wonder**, the Centre features seven learning zones, with stimulating and interactive experiences for children aged 4 to 12 to learn about art through play.

The Gallery is grateful to Keppel for their generous support in making the Keppel Centre for Art Education possible.

FREE
FOR ALL

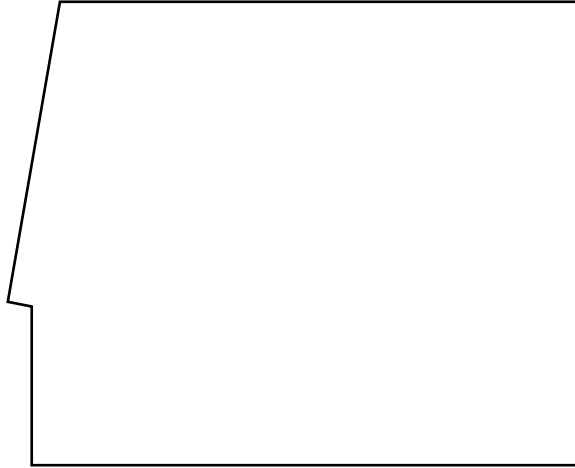


Eidolon by Vong Phaophanit and Claire Oboussier

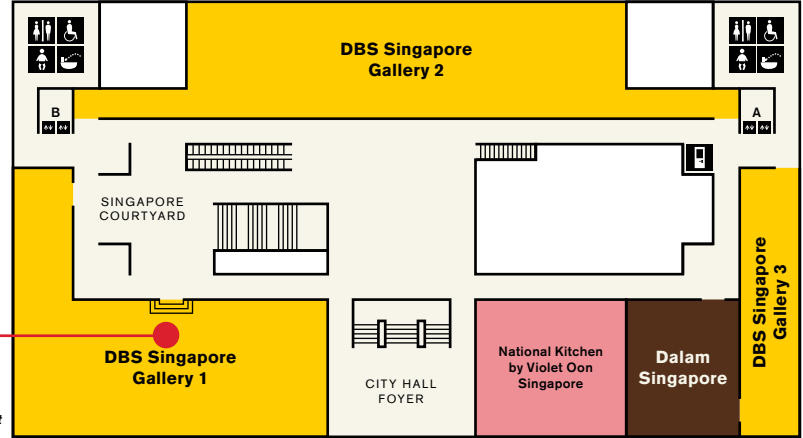
City Hall Wing, City Hall Courtyard

Eidolon is an intervention that plays on multiple registers—architectural, historical, critical and poetic. A diagonal plane bisecting the City Hall Courtyard, it evokes a veil, threshold, mirage or spectre. Monumental yet ethereal, its asymmetry subtly disrupts the space, prompting a shift in visitors' perception and movement.

FREE
FOR ALL



MUST-SEE!
Lee Boon Ngan's
Singapore Breakfast



..... SUPREME COURT WING

..... CITY HALL WING



Singapore Stories: Pathways and Detours in Art

City Hall Wing, Level 2,
DBS Singapore Gallery

The long-term exhibition presents a layered, ever-changing story of Singapore's art history, as it continually questions itself: Whose story is this? Where is home? What is art for? See 400 artworks and artefacts from the 19th century to the present by 150 artists including Georgette Chen, Liu Kang, Jaafar Latiff and more.

DBS Singapore Gallery
Highlights Tour
English Thu–Sun 3.30pm
Mandarin Sat–Sun 2.30pm

The DBS Singapore Gallery is made possible with the support of DBS.
Singapore Stories: Pathways and Detours in Art
is supported by the Cultural Matching Fund.

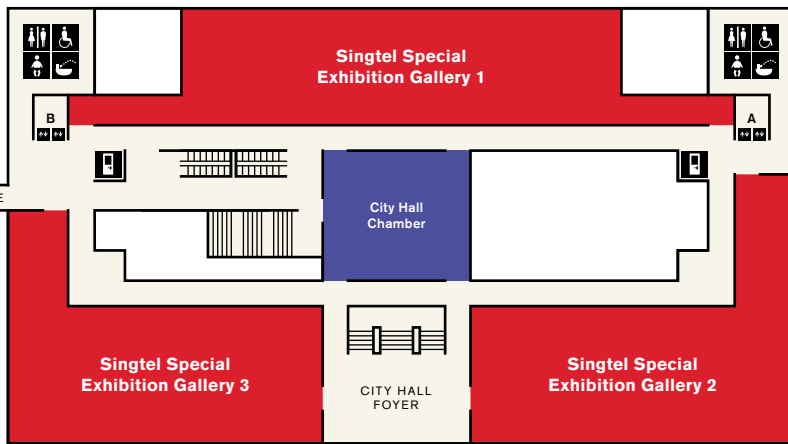
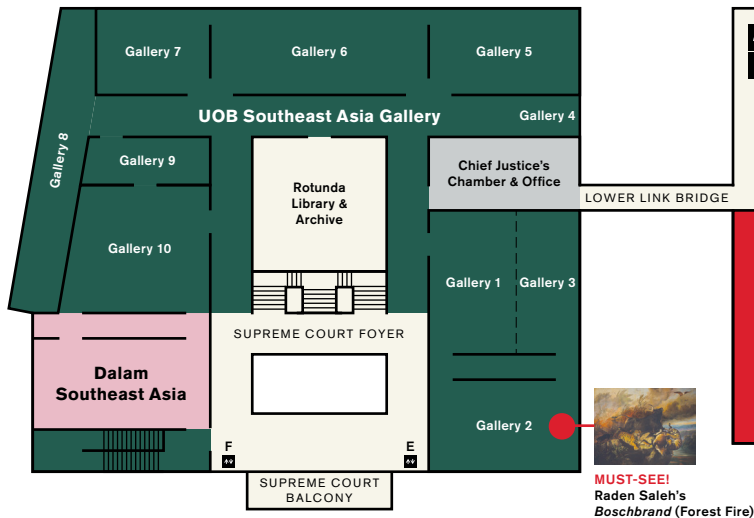


Tchang Ju Chi: Tireless Camel

City Hall Wing, Level 2,
DBS Singapore Gallery

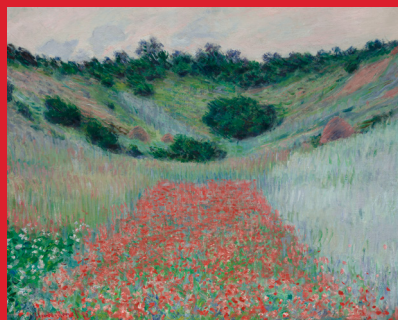
Tchang Ju Chi was a prominent artist who shaped Singapore's nascent arts scene in the 1920s–1940s. This exhibition brings together rarely seen artworks and archival materials, shedding light on his life and practice.

Tchang Ju Chi Curator Tour
Sat 18 Oct | 11am



SUPREME COURT WING

CITY HALL WING



THE LARGEST FRENCH IMPRESSIONIST EXHIBITION IN SOUTHEAST ASIA. OPENS 14 NOV.
Into the Modern: Impressionism from the Museum of Fine Arts, Boston.

City Hall Wing, Level 3,
Singtel Special
Exhibition Gallery

Explore the revolutionary world of Impressionism through iconic works by Renoir, Monet, Manet, Cézanne and Degas, never before exhibited in Singapore. Organised by the Museum of Fine Arts, Boston in partnership with National Gallery Singapore, this exhibition highlights the continuing relevance of Impressionism through themes of urban life, environmental change and labour.

The Singtel Special Exhibition Gallery is made possible with the support of Singtel.

EXHIBITION
PARTNER
MF7Boston
From Boston, for the world

SERIES
PARTNER
Singtel

PRESENTING
PARTNER
J.P.Morgan

STRATEGIC
PARTNER
**Singapore
TOURISM
BOARD**

Into the Modern
Public Tour

English Thu–Sun 3.30pm
Mandarin Sat–Sun 1.30pm



THE MAKINGS OF
MULTICULTURAL SINGAPORE

NEW!
OPENS
31 OCT

Not Mere Spectators:
The Makings of Multicultural Singapore

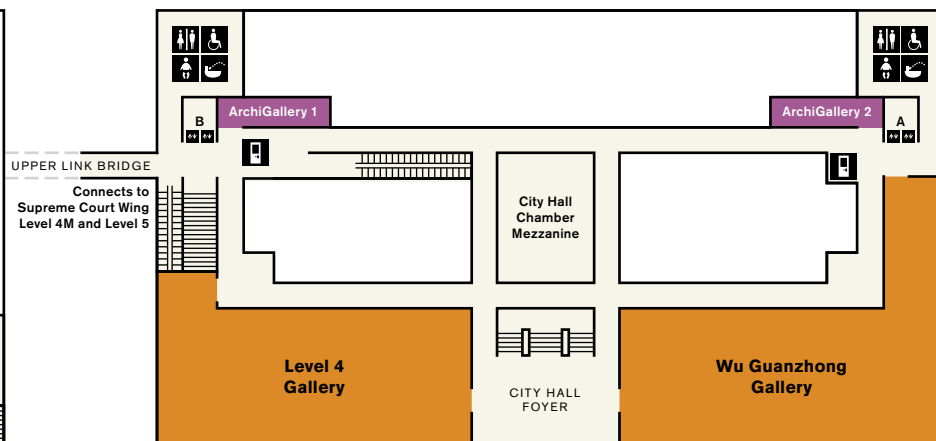
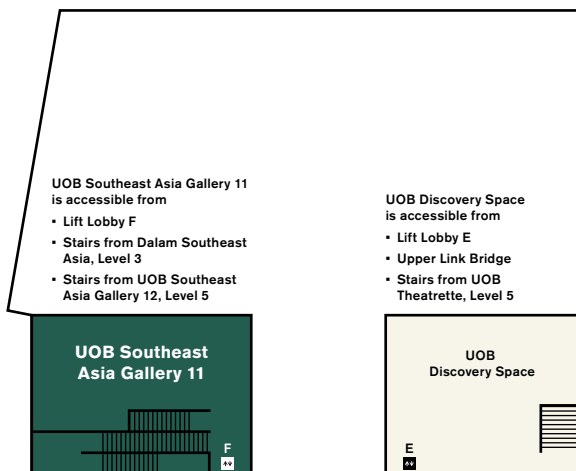
City Hall Wing, Level 3, City Hall Chamber

Step into 1950s–1970s Singapore, when multiculturalism was thought about, talked about, and consciously forged through policies, ground-up efforts and the choices of ordinary citizens. Explore ideals and realities—then find your place on the stage of multicultural Singapore, still in the making.

Not Mere Spectators
Public Tour
English Sat–Sun 3pm

PRESENTED BY





..... SUPREME COURT WING

..... CITY HALL WING



Fernando Zóbel: Order is Essential

City Hall Wing, Level 4,
Wu Guanzhong Gallery
and Level 4 Gallery

Fernando Zóbel
Public Tour
English Thu–Sun 11am
Mandarin Sat–Sun 2pm



**CLOSES
30 NOV**

Explore Singapore's first solo exhibition on Fernando Zóbel, a transcontinental artist, thinker and art patron who shaped a language in international abstraction and instilled the vital beauty of order in the unpredictable creative process.

The exhibition is an iteration expanding on *Zóbel: The Future of the Past*, an exhibition held at the Museo Nacional del Prado, Madrid, Spain (2022) and Ayala Museum, Manila, Philippines (2024).



**Listening to Architecture:
The Gallery's Histories and Transformations**

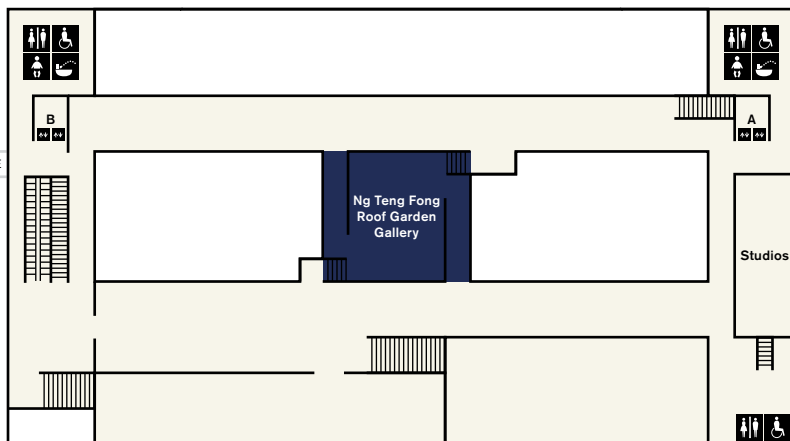
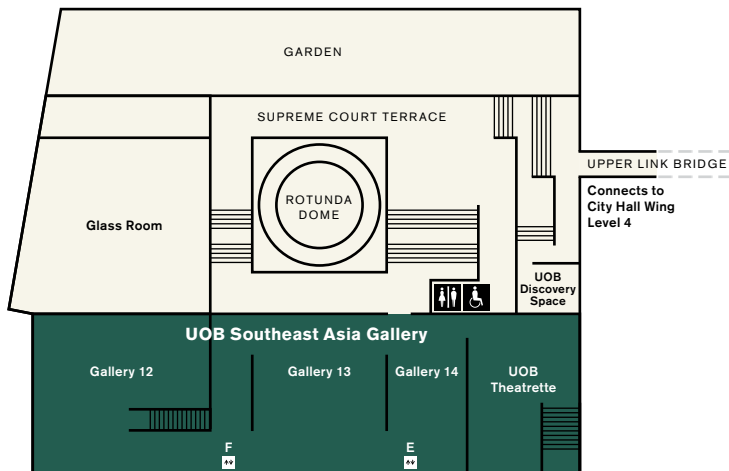
City Hall Wing, Level 4,
ArchiGallery

Listening to Architecture traces the journey of the City Hall and former Supreme Court buildings through a multi-sensory immersive experience, from the origins of their sites to their dramatic transformation into National Gallery Singapore.

5 & 4M

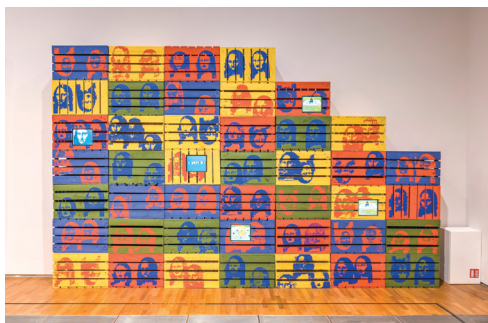
Lift
 Restroom
 Baby changing room
 Accessible restroom
 Drinking fountain
 Self-service kiosk

Between Declarations and Dreams
Temple



..... SUPREME COURT WING

..... CITY HALL WING



NEW!
OPENS
25 OCT

**Ng Teng Fong Roof Garden Commission:
Temple by Tuan Andrew Nguyen**

City Hall Wing, Level 5,
Ng Teng Fong Roof Garden Gallery

Temple invites you to take part in the creation of a healing soundscape and contemplate land, history and conflict. The monumental installation features percussive elements made from defused unexploded ordnance that when struck, generate frequencies connected to the possibility of healing and repair.

SERIES PARTNER



The Ng Teng Fong Roof Garden Commission series is made possible with the support of Far East Organization.

***Between Declarations and Dreams:
Art of Southeast Asia Since the 19th Century***

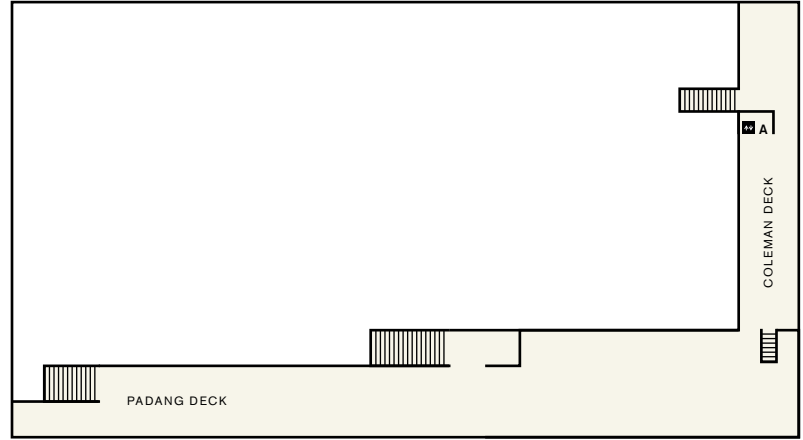
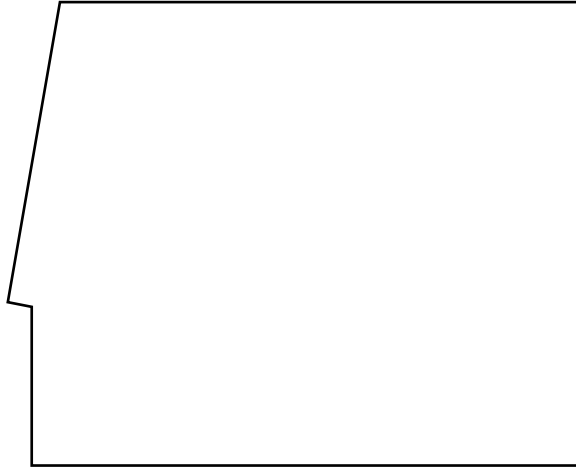
Supreme Court Wing,
Levels 3–5, UOB Southeast Asia Gallery

UOB Southeast Asia Gallery
Highlights Tour
 English Thu–Sun 2pm
 Mandarin Sat–Sun 4pm

In this exhibition, Southeast Asian art history is characterised by a continuous encounter with the new, as the region's artists reinvented vernacular expressions and aesthetics.

See Apinan Poshyananda's pathbreaking video installation, *How to Explain Art to a Bangkok Cock* (above), and Edgar Talusan Fernandez's *Ang Tao* in **UOB Southeast Asia Galleries 12 and 9**, as well as new displays in galleries 1, 2, 5, 8 and 11.

The UOB Southeast Asia Gallery is made possible with the support of UOB.



CITY HALL WING

GALLERY ETIQUETTE



Food and drinks are not permitted in the galleries and public spaces.



No flash photography or videography in the galleries. The use of selfie sticks, tripods and lighting equipment is not permitted in the galleries.



Please do not touch the artworks. Even clean hands can damage surfaces.



Large bags and bulky items including umbrellas should be stored in lockers located at City Hall Wing, Level B1.



Children must be accompanied by an adult at all times in the Gallery.



Pencil sketching is permitted in the galleries with sketchbooks no larger than 22 × 28cm.



Charcoal, pastel, permanent markers, watercolour and oil paint are not permitted.

Image credits

Level 5 & 4M

(Middle) Apinan Poshyananda. *How to Explain Art to a Bangkok Cock*. 1985, reconstructed 2019. Painted crates and LCD monitors, 270 × 360 × 50 cm. Collection of National Gallery Singapore.

(Right) Image courtesy of Tuan Andrew Nguyen.

Level 3

(Left) Claude Monet. *Poppy Field in a Hollow near Giverny*. 1885. Oil on canvas, 65.1 × 81.3 cm. Juliana Cheney Edwards Collection. Photograph © Museum of Fine Arts, Boston.

(Middle-left) Pierre-Auguste Renoir. *Woman with a Parasol and Small Child on a Sunlit Hillside*. c. 1874–1876. Oil on canvas, 47 × 56.2 cm. Bequest of John T. Spaulding. Photograph © Museum of Fine Arts, Boston.

(Middle-Right) Pierre-Auguste Renoir. *Dance at Bougival*. 1883. Oil on canvas, 181.9 × 98.1 cm. Picture Fund. Photograph © Museum of Fine Arts, Boston.

Must-Sees

(Left) Raden Saleh. Detail of *Boschbrand (Forest Fire)*. 1849. Oil on canvas, 300 × 396 cm. Collection of National Gallery Singapore. This work has been adopted by Yong Hon Kong Foundation.

(Middle) Lee Boon Ngan. *Singapore Breakfast*. 1973. Oil on paper, 37.6 × 47.7 cm. Collection of National Gallery Singapore.

Tours

We're always adding new tours held in conjunction with ongoing exhibitions. Please check our website for the latest tour information.



SCAN FOR
LATEST INFO



DAILY TOURS

Explore the rich history of our buildings and collections by joining one of our guided tours led by trained docents.

BUILDING HIGHLIGHTS

FREE! No ticket required, on-site registration required

Explore the rich stories within the walls of two national monuments—City Hall and the former Supreme Court.

DBS SINGAPORE GALLERY HIGHLIGHTS

General Admission ticket required, to be purchased separately

Explore iconic artworks and discover stories of Singapore through its art, artists and artistic heritage from the 19th century to present.

Please proceed to our Visitor Services Counter on the day of your visit to register for our tours. The Gallery reserves the right to cancel tours without prior notice.

GROUP TOURS

We provide a variety of group tour options upon request. For more information, please email GroupEnquiries@nationalgallery.sg.

HIGHLIGHTS OF THE GALLERY

General Admission ticket required, to be purchased separately

Join our docents and explore key architectural features and masterpieces from our long-term exhibitions on Singapore and Southeast Asian Art.

UOB SOUTHEAST ASIA GALLERY HIGHLIGHTS

General Admission ticket required, to be purchased separately

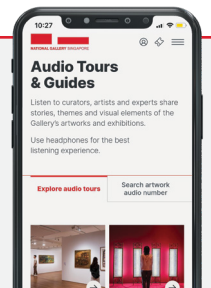
Explore over 300 artworks that highlight the deep connections between sociopolitical changes and artistic influences across Southeast Asia.

AUDIO TOURS & GUIDES

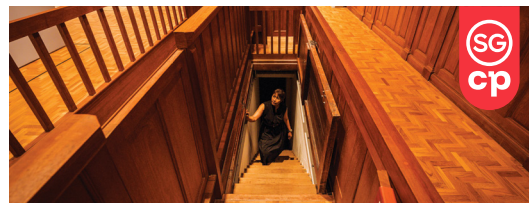
Listen to curators, artists and experts as they share stories, themes and visual elements of the Gallery's artworks and exhibitions.



SCAN TO
LISTEN



SPECIAL TOURS



BACK-OF-HOUSE TOUR:

"FORMER SUPREME COURT: UNSEEN, UNHEARD"

English Tue 2.30pm, Sat 2.30pm, Sun 4.30pm |
Mandarin Tue 4.30pm, Sun 2.30pm | Ticketed

This 90-minute tour offers a glimpse into restricted areas of the former Supreme Court, which are usually out of bounds to the public. Go behind the scenes and find out more about courtroom proceedings and the experience of persons on trial.

HALLOWEEN EDITION

Fri–Sun, 10 Oct–2 Nov | 8–10pm | Ticketed

In the month of October, walk through the shadows of history as ghostly encounters and haunting myths come to life in the former Supreme Court.

THE TOUR IS NOT SUITABLE FOR VISITORS BELOW THE AGE OF 13 AND VISITORS WITH LIMITED MOBILITY. PLEASE WEAR COMFORTABLE FOOTWEAR AND ATTIRE.

HALLOWEEN ACTIVITIES

TRICK OR TREAT FAMILY FUN

Sun, 5 Oct–2 Nov | 10.30am–12pm, 2.30–5pm | Ticketed

A family that haunts together, slays together. Come in your eeriest family outfits! Join us for a workshop activity, trick-or-treating and a tea break at Bakery Brera Café.

VENUE RENTAL & SHOOTS

Blending rich history with exciting modernity, the Gallery's unique and timeless spaces are ideal for hosting events and shooting memorable photos and videos. For more information, please visit nationalgallery.sg/venue-rental.

Activities

Special tours, art talks, workshops, film screenings and music performances are held regularly at the Gallery. Scan the QR code to sign up!



SCAN TO
SIGN UP



SCAN TO
LEARN MORE

DISTINGUISHED SCHOLARS SERIES: GRISELDA POLLOCK

Sat 22 Nov | 5pm | City Hall Wing, Level B1, The Ngee Ann Kongsi Auditorium | Registration required: Standard \$20, Concession \$10

Eminent feminist, postcolonial and social art historian Griselda Pollock examines conventional and contested interpretations of Impressionist painting to reflect on the responsibilities of museums in the circulation and suppression of knowledge. This is a hybrid event: Griselda Pollock will be speaking remotely from the UK.



SCAN TO
LEARN MORE

PERFORMANCE RESPONSE TO FERNANDO ZÓBEL: ORDER IS ESSENTIAL

Sat 22 Nov | 2pm, 3pm | Level B1, Padang Atrium

Experience a compelling Spanish dance performance inspired by Fernando Zóbel's engagement with the works of Spanish playwright Federico García Lorca during his academic life at Harvard. Presented by dancer and arts producer Tania Goh, the performance explores themes of love, longing and vulnerability through expressive choreography and music.

PERFORMANCE LECTURE WITH TANIA GOH AND PATRICK FLORES

Sat 22 Nov | 3.45pm | City Hall Wing, Level 4, Wu Guanzhong Gallery

Join Tania Goh and Chief Curator Patrick Flores as they delve into the theme of connections surrounding Fernando Zóbel's artistic journey. Weaving performances and dialogue, Goh will use Zóbel's *Saeta* series to draw connections between his artistic pursuits and her own creative practice.

Image credits: (Top) Marta Jara, Madrid, 2024. (Bottom) Images courtesy of Tania Goh.

SG culture pass



SCAN TO
DISCOVER
MORE

Use your SG Culture Pass credits to offset ticket purchases at the Gallery. Discover, enjoy and engage with our eligible programmes for all ages.

COME TOGETHER

SHARING A LOVE FOR ART SINCE 2015

Sat–Sun, 15–16 Nov | Various venues
Ticketed and free admission

This November, the Gallery celebrates a decade of art and connection as it marks the 10th year since opening to the public in 2015. To mark this milestone, we are hosting a special weekend filled with exciting activities for all ages and visitors. Alongside free admission to all exhibitions, look forward to celebrity-hosted tours, live performances, after-dark experiences, limited-edition merchandise and even an afternoon rave at the Gallery.

For the full lineup of happenings, please visit galleryturns10.sg.

Families

Enjoy programmes specially designed to develop curiosity, imagination and the appreciation of art in children. Scan the QR code for the latest programme information.



SCAN FOR
LATEST INFO

KIDS' PROGRAMMES AND ACTIVITIES

City Hall Wing, Level 1, Keppel Centre for Art Education



Inspired by the theme **Art & Wonder**, Keppel Centre for Art Education features multiple educational zones in which families and children can experience the world of art through play, creativity and imagination.

MONTHLY PROGRAMMES



GalleryToddlers!

Want to engage your toddler in the Gallery but don't know where to start? GalleryToddlers! invites children and parents to take part in sensory play inspired by different artworks each month!

SCHOOL HOLIDAY PROGRAMMES



Art Alive!

Immerse yourselves in the world of art and let your imagination soar with Art Alive! This programme offers families a fun and exciting journey of exploration, using drama and storytelling to bring art to life.



ARTventure Camp

At our thematic ARTventure Camps, participants will dive into exciting hands-on activities, interactive gallery tours and fun collaborative projects—all designed to inspire creativity and imagination!



Free entry for all | Now till 29 Mar 2026

The highly anticipated fifth edition of the Gallery Children's Biennale coincides with the Gallery's 10th anniversary. Through the overarching theme of **Tomorrow We'll Be...**, this Biennale invites children and families to imagine the possibilities of their future by exploring the four core values of **Joy, Kindness, Dream and Love**.

Look forward to eight multi-sensorial artwork installations by local and international artists such as **Fern Wong, Wyn-Lyn Tan, Vicente Delgado, Co2_karbondioksida, Souliya Phoumivong, Hiromi Tango** and **Lee YeSeung**. The artists' responses to the theme and core values are expressed through unique and site-specific installations throughout the Gallery.

Enjoy free admission to the Biennale and take part in a series of fun and engaging programmes throughout its run!

The Gallery Children's Biennale has been one of National Gallery Singapore's signature events since 2017, embodying the Gallery's commitment to inspire young and curious minds with art. It aims to explore the many ways that children can learn and play while engaging more with the world around them.

Development Partner

**Better
Everyday**
By Tote Board

Matched by

**CULTURAL
MATCHING
FUND**

Major Partner

OUE

Shop & Dine

The Gallery has a suite of specially curated dining and retail spaces—including a Michelin-starred restaurant—that offer a variety of cuisines and unique museum merchandise.



Reservations are highly encouraged



SCAN FOR
MORE INFO



Bakery Brera

French-European Bakery café, \$

City Hall Wing, Level 1

Tel : 8801 1273

Daily 9am–7pm



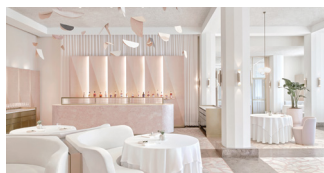
Kopi 1930 & Twenty Eight Cafe

Singaporean & Modern Australian Café, \$

City Hall Wing, Level 1

Daily 8am–7pm

(Opens Oct 2025)



Odette ❀❀❀

Modern French restaurant, \$\$\$\$

Supreme Court Wing, Level 1

Tel: 6385 0498

Tue–Sat noon–1.15pm (last seating),

Mon–Sat 6.30–8pm (last seating),

Closed on Sun and public holidays

(Closed for renovation, reopening Dec 2025)



Gilmore & Damian D'Silva

Singaporean & Eurasian Heritage restaurant, \$\$\$\$

Supreme Court Wing, Level 1

Daily 11.30am–10pm

(Opens Nov 2025)



National Kitchen by Violet Oon Singapore

Singaporean restaurant, \$

City Hall Wing, Level 2

Tel: 9834 9935

Lunch and Dinner: Daily noon–3pm,
6–10.30pm | High Tea: Fri–Sun,
public holidays 3–5pm



Rempapa

Singaporean café, \$

Supreme Court Wing, Level 1

Daily 9am–7pm

(Opens Nov 2025)

GALLERY PUBLICATIONS

Explore the art of Singapore and Southeast Asia through our illustrated publications. Our growing range includes exhibition catalogues, research titles and children's books.

Check them out at **The Gallery Store by ABRY** or online at abry.global.

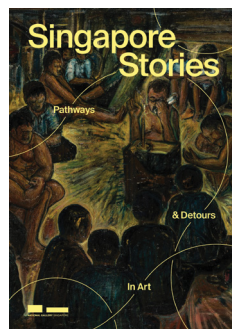


The Gallery Store by ABRY

Books and museum gifts

City Hall Wing, Level 1

Daily 10am–7pm



SINGAPORE STORIES:

PATHWAYS AND DETOURS IN ART

132 pages | Paperback |

\$45 (including GST)

Singapore Stories: Pathways and Detours in Art presents a fresh take on one of National Gallery Singapore's long-term exhibitions, exploring how the nation's art has reflected and shaped shifting ideas of identity, place and community from the 19th century to today. This richly illustrated catalogue foregrounds the new exhibition's narratives, highlighting the contributions of diverse artists, aesthetic experiments and institutional changes. These are layered stories that unfold across time, disciplines and perspectives, revealing the complexity and vivacity of Singapore's art scene.

Fernando Zóbel

Order is Essential

The Future of the Past

FERNANDO ZÓBEL:

ORDER IS ESSENTIAL

164 pages | Paperback |

\$60 (including GST)

Fernando Zóbel: Order is Essential covers the full scope of Fernando Zóbel's oeuvre. The catalogue features five curatorial essays offering new insights into Zóbel's transnational practice. The full-colour plates are broken into four geographical sections, New England, Manila, Madrid and Cuenca, and trace the evolution of Zóbel's work and influences.

Admissions

Purchase your tickets online or on-site from our self-service kiosks. Check out our latest promotions and rates at nationalgallery.sg/admissions.



SCAN TO PURCHASE

TICKET TYPE	SINGAPOREANS/ PRs	OTHER NATIONALITIES
General Admission + Free Guided Tours	FREE	\$20
Special Exhibition	N/A**	\$25
All Access*	\$15	\$30

- Free admission for:**

 - Gallery Insiders
 - Children aged 6 and below
 - Students and teachers*
 - Persons with disabilities (PWD) and their caregivers
- Concession at \$5 off* for:**

 - Children aged 7–12
 - Seniors aged 60 and above
 - Full-time National Servicemen (excluding foreign personnel)
 - Overseas students and teachers from qualifying institutions

* The All Access ticket grants entry to all galleries.
** Singaporeans and PRs who purchase a Special Exhibition ticket are automatically upgraded to an All Access ticket.
^ Verification is required.
From institutions with local campuses.

- General Admission admits one to:**

 - *Singapore Stories*
 - *Between Declarations and Dreams*
 - *Fernando Zóbel* (Closes 30 Nov)
 - *Diplomacy and Desire*
 - *Tchang Ju Chi*
- Special Exhibition admits one to:**

 - *Into the Modern* (Opens 14 Nov)

- Enjoy free and easy art encounters for all—no tickets required:**
- **City Hall Wing, Level B1, The Ngee Ann Kongsi Concourse Gallery**
Dalam Collection: *Where Ink Tides Meet* (Closes 16 Nov)
 - **City Hall Wing, Level 1, Keppel Centre for Art Education**
 - **City Hall Wing, Level 3, City Hall Chamber**
Not Mere Spectators: The Makings of Multicultural Singapore (Opens 31 Oct)
 - **City Hall Wing, Level 4, ArchiGallery**
Listening to Architecture: The Gallery's Histories and Transformations
 - **City Hall Wing, Level 5, Ng Teng Fong Roof Garden Gallery**
Ng Teng Fong Roof Garden Commission:
Temple by Tuan Andrew Nguyen (Opens 25 Oct)
 - **City Hall Wing, Level 6, Padang and Coleman Deck**
 - **Supreme Court Wing, Level 3, Chief Justice's Chamber & Office**
Laws of Our Land: Foundations of a New Nation
 - **Gallery Children's Biennale 2025, multiple locations**

Membership

Enjoy admission privileges, free parking and discounts on dining and shopping. Join a community of art enthusiasts and elevate your art experience.



SCAN TO SIGN UP

Membership Type	EXPLORER	INSIDER
	FREE	STANDARD: \$35 / \$30^ LOCAL*: \$20 / \$15^

Free parking daily	1 hour	2 hours
Stay updated on seasonal offers	✓	✓
Unlimited free access to all exhibitions		✓
Pre-opening and after hours exhibition viewing		✓
Members-only events		✓
Shopping and dining discounts		15%*
Early bird access to exclusive offers		✓
Earn points and redeem for rewards		✓

To find out more, please visit nationalgallery.sg/membership.

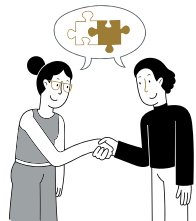
* Rate for locals apply to Singapore Citizens and Permanent Residents.
^ Concessions are available for students, full-time NSFs and seniors aged 60 and above.
Discounts may vary. Please visit nationalgallery.sg/membership for full details.
Offers are accurate at time of print.

Support the Gallery

As a registered Charity and an Institute of Public Character, National Gallery Singapore relies on your support to build collections, engage in research, develop programmes and bring art to everyone.



SCAN TO
DONATE



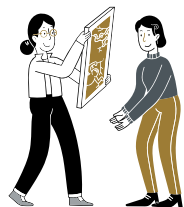
Be our Corporate Partner

Corporates can support us as an Exhibition or Programme Partner. The Gallery offers bespoke partnership opportunities to increase brand awareness while giving back to the community as well as engaging clients with unique art experiences.



Community, Education and Exhibition Partnerships

Generate new knowledge in the visual arts and engage underserved communities with impactful programmes. Help champion a thoughtful, creative and inclusive society.



Donate a Work of Art

Join other forward-thinking donors and gift an artwork, helping us to build a significant national collection, enrich our cultural heritage and ensure its enduring legacy for future generations.



Make a Bequest

Celebrate a loved one by donating in memory of them or consider leaving a legacy gift to the Gallery in your will. Your generosity will be appreciated for generations to come.

BE OUR PATRON

Be part of an art-loving community and enjoy exclusive privileges including tours, experiences and behind-the-scenes access.



SCAN TO BE A
PATRON TODAY

GALLERY PATRON

National Gallery Singapore would like to thank our corporate partners for their generous support.

Development Partner



Founding Partners



Partner



Supported by



For details on partnership opportunities, please visit nationalgallery.sg/join-give/support-the-gallery or contact us at SupportUs@nationalgallery.sg.

All gifts made are eligible for tax deductions in accordance with IRAS guidelines.

nationalgallery.sg

6271 7000

info@nationalgallery.sg

**1 St Andrew's Road
Singapore 178957**

Daily 10am–7pm



NationalGallerySingapore



NatGallerySG



新加坡国家美术馆

Copyright in the content in this brochure may also reside in persons and entities other than, and in addition to, the Gallery. The Gallery seeks to share our artworks with as many people as we can. We are fully committed to respecting the intellectual property rights of others and always use our best efforts to obtain permission for artwork images used. Please contact us should you have any queries about this. Unless otherwise mentioned, all artwork images have been provided through the courtesy of National Heritage Board, Singapore and artworks featured are from the collection of National Gallery Singapore. The Gallery Guide is published by National Gallery Singapore. All rights reserved. Materials in this publication may not be reproduced in part or in whole without written consent of the Gallery. Every effort has been made to ensure the accuracy of information within this publication. However, changes are sometimes unavoidable and the Gallery reserves the right to make modifications to the programmes and ticketing policy without prior notice. Please visit nationalgallery.sg for the most updated information. The views and opinions expressed by speakers, facilitators and docents at the workshops and tours do not necessarily represent the position of the Gallery. Published in September 2025. All information is correct at time of print.

PLEASE RETURN THIS BROCHURE FOR RECYCLING