



**NATIONAL
GALLERY
SINGAPORE**

**JAN-MAR
2026**

GUIDE+ MAP



SCAN FOR
DIGITAL COPY



Welcome to National Gallery Singapore

National Gallery Singapore is Southeast Asia's largest modern and contemporary art museum, dedicated to making art accessible to all. Through exhibitions, learning programmes and festivals for all ages, the Gallery invites everyone to explore its home in the historic City Hall and former Supreme Court buildings.



SUPREME COURT WING

- Level 1: *SINGAPORAMA* by Navin Rawanchaikul
- Levels 3–5: *Between Declarations & Dreams: Art of Southeast Asia Since the 19th Century*
- Level 3: *Dalam Southeast Asia: Diplomacy and Desire: Basoeki Abdullah in Singapore*
- Level 3: *Laws of Our Land: Foundations of a New Nation*

CITY HALL WING

- Level B1: *Fear No Power: Women Imagining Otherwise*
- Level 1: *Eidolon* by Vong Phaophanit and Claire Oboussier
- Level 2: *Singapore Stories: Pathways and Detours in Art*
- Level 2: *Dalam Singapore: Tchang Ju Chi: Tireless Camel*
- Level 3: *Into the Modern: Impressionism from the Museum of Fine Arts, Boston*
- Level 3: *Not Mere Spectators: The Makings of Multicultural Singapore*
- Level 5: *Ng Teng Fong Roof Garden Commission: Temple* by Tuan Andrew Nguyen

Need a guide?



Looking for an itinerary to guide your visit? Select from a range of Self-Guided Tours—whether you are visiting for the first time, looking for a tour of our iconic masterpieces or just here for the 'gram, there is something for everyone!



SCAN TO TRY

AN ACCESSIBLE EXPERIENCE FOR ALL

The Gallery is committed to creating an inclusive experience that can be enjoyed by visitors with access needs.



SCAN FOR ACCESS GUIDE

Located at City Hall Wing, Level B1, the **Calm Room** is a dedicated space where visitors can rest if they are feeling overstimulated or overwhelmed by their environment.



FREE WI-FI

Connect to our free visitor Wi-Fi: **"Gallery Visitors"**

PHOTOGRAPHY & RECORDINGS

Please note that photographs, video and audio recordings may be taken in and around our premises from time to time. By entering the Gallery, you consent to having any photographs or recordings taken of you used by the Gallery for publishing, marketing and other purposes. Please approach our Gallery staff should you have any concerns.

LEGEND

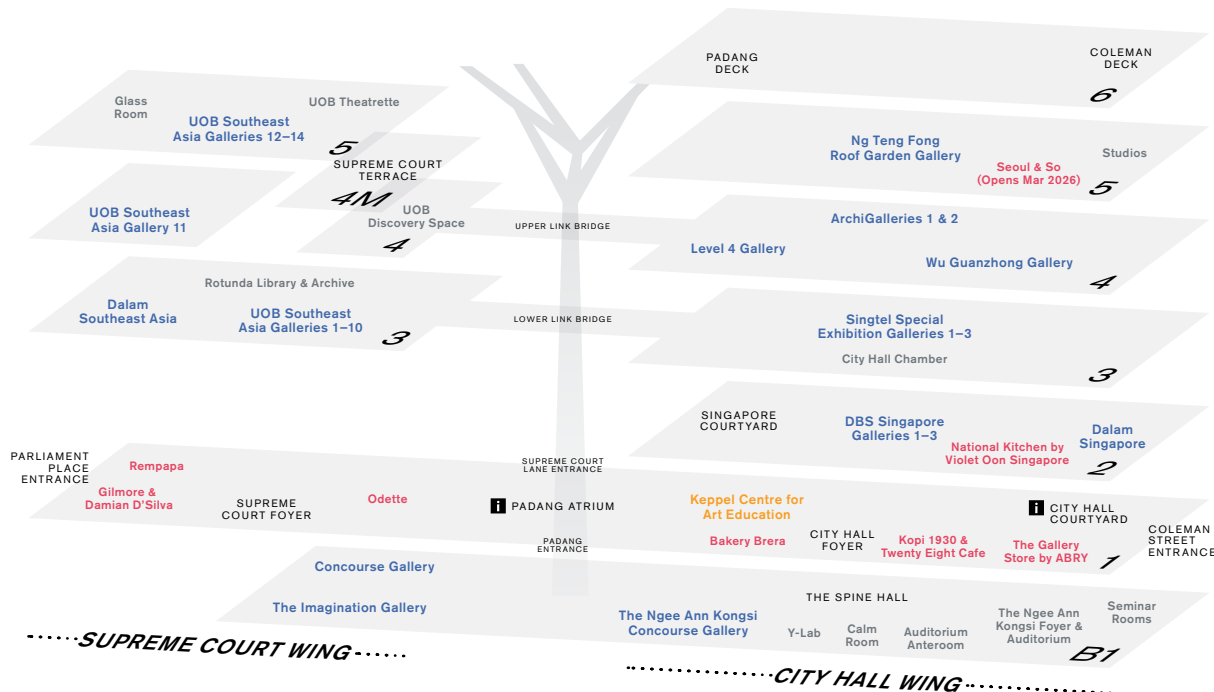
- Galleries
- Education
- Shop & Dine
- Museum Services and Special Facilities
- MUSEUM SPACES

i Available at Visitor Services

Level 1 Padang Atrium and
Level 1 City Hall Courtyard

- Gallery Tickets
- Tours
- Lost & Found

Carparks at City Hall Wing,
Levels B2 and B3 accessible
via Lift Lobbies A and B only



Must-Sees!



Raden Saleh's *Boschbrand* (Forest Fire)

- Supreme Court Wing, Level 3,
UOB Southeast Asia Gallery 2

This monumental painting depicts wild animals chased by flames in a dense, elaborate composition. A year after it was gifted to his patron King Willem III of the Netherlands, Raden Saleh was awarded the title of "King's Painter."

This work has been adopted by Yong Hon Kong Foundation.



Lee Boon Ngan's *Singapore Breakfast*

- City Hall Wing, Level 2,
DBS Singapore Gallery 1

Painted in the 1970s yet instantly recognisable today, this still life oil painting captures the timeless charm of familiar breakfast staples that have nourished generations—two soft-boiled eggs, thick-cut bread, butter and coffee.



SELF-GUIDED TRAIL: FEEL YOUR WAY THROUGH THE GALLERY

Explore the Gallery in this
self-guided trail inspired
by Emotions of Disney and
Pixar's *Inside Out 2*!



For the latest information on
our exhibitions and festivals,
scan the QR code to visit
nationalgallery.sg/whats-on.





Lift



Restroom



Baby changing room



Accessible restroom



Drinking fountain



Information



Wheelchair loan



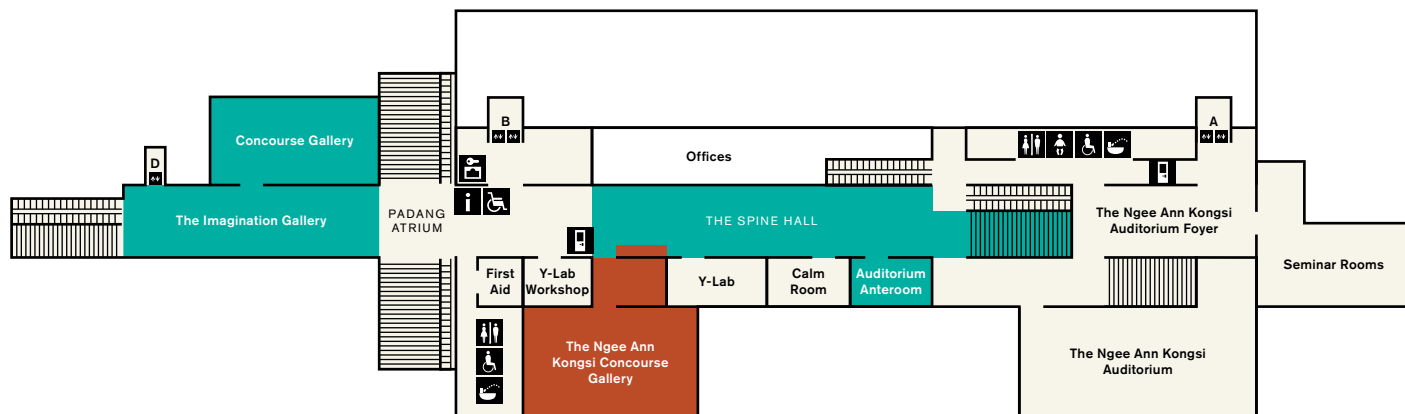
Self-service kiosk



Locker

Gallery Children's Biennale

Fear No Power



..... SUPREME COURT WING

..... CITY HALL WING



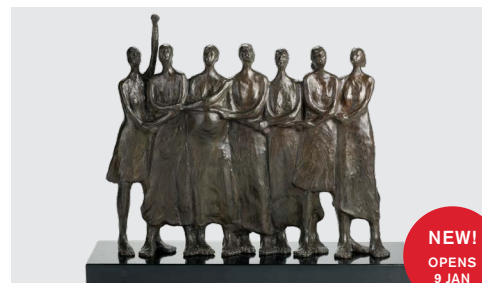
FREE!
CLOSES
29 MAR

Gallery Children's Biennale 2025: Tomorrow We'll Be...

Various locations
within the Gallery
on Levels B1 and 1

The Gallery Children's Biennale continues to inspire young and curious minds with art. Now into its final months, the fifth edition, **Tomorrow We'll Be...**, invites children to reflect on the endless possibilities of their future through four core values: **Joy, Kindness, Dream and Love**. Visitors can still experience eight multi-sensorial artwork installations by local and international artists, along with a range of fun and engaging programmes before the Biennale closes.

The Gallery Children's Biennale was made possible with the support of ToteBoard, Cultural Matching Fund and OUE.

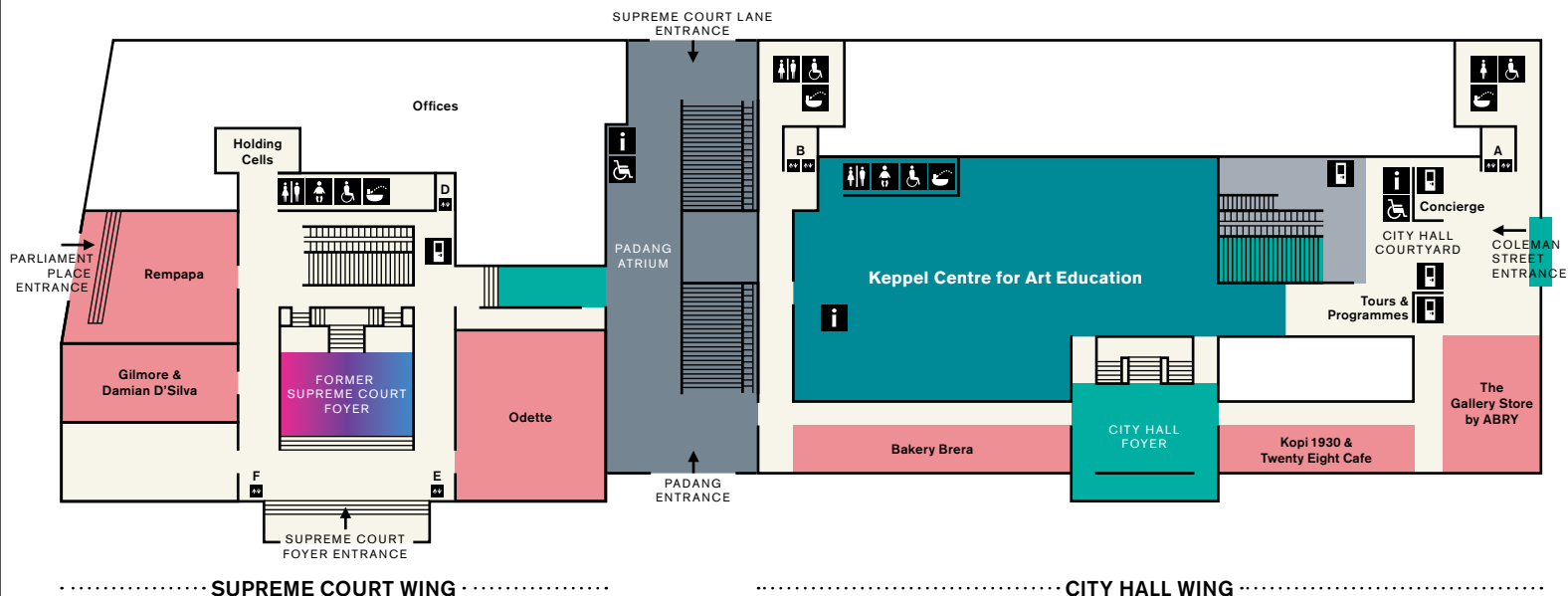


NEW!
OPENS
9 JAN

Fear No Power: Women Imagining Otherwise

City Hall Wing, Level B1,
The Ngee Ann Kongsi Concourse Gallery
and The Spine Hall

Fear No Power: Women Imagining Otherwise constellates the practices of Nirmala Dutt, Imelda Cajipe Endaya, Amanda Heng, Dolorosa Sinaga and Phaptawan Suwannakudt—artists for whom art, life and community are intertwined. Spanning the 1960s to 2010s, their works engage questions of gender, labour and power amid the shifting social and political landscapes of Southeast Asia.



Light to Night Singapore 2026:
The Power in Us

Various locations around the
Civic District and within the Gallery

Light to Night Singapore returns from 9 to 31 Jan, illuminating the Civic District with vibrant programmes, light projections and art installations. This year's theme **"The Power in Us"** explores the profound connections forged when people and communities unite through art to reflect, converse and create.

NEW!
OPENS
9 JAN



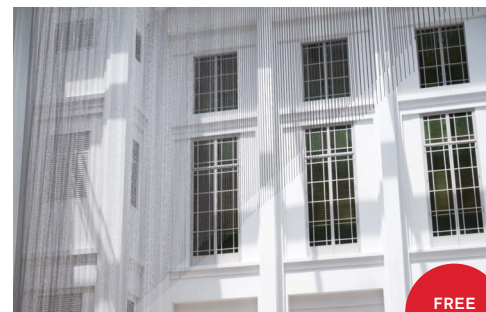
SINGAPORAMA
by Navin Rawanchaikul

Padang Atrium

SINGAPORAMA by Navin Rawanchaikul offers a vibrant, panoramic look at the many lives and cultures that make up Singapore.

Through large, cinematic billboard paintings, video interviews and a travelogue of his encounters, the artist captures the stories, faces and everyday moments of the communities.

NEW!
FREE
FOR ALL



Eidolon by Vong Phaophanit
and Claire Oboussier

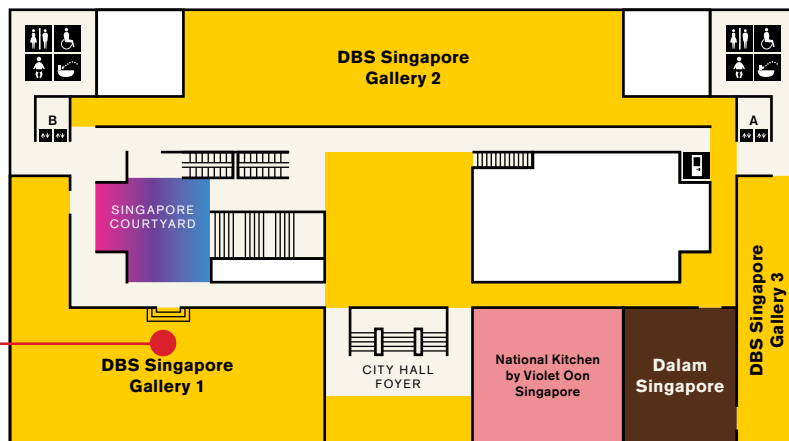
City Hall Wing, City Hall Courtyard

Eidolon is an intervention that plays on multiple registers—architectural, historical, critical and poetic. A diagonal plane bisecting the City Hall Courtyard, it evokes a veil, threshold, mirage or spectre. Monumental yet ethereal, its asymmetry subtly disrupts the space, prompting a shift in visitors' perception and movement.

FREE
FOR ALL



MUST-SEE!
Lee Boon Ngan's
Singapore Breakfast



..... SUPREME COURT WING

..... CITY HALL WING



Singapore Stories: Pathways and Detours in Art

City Hall Wing, Level 2,
DBS Singapore Gallery

The long-term exhibition presents a layered, ever-changing story of Singapore's art history, as it continually questions itself: Whose story is this? Where is home? What is art for? See 400 artworks and artefacts from the 19th century to the present by 150 artists including Georgette Chen, Liu Kang, Jaafar Latiff and more.

DBS Singapore Gallery
Highlights Tour
 English Thu–Sun 3.30pm
 Mandarin Sat–Sun 2.30pm

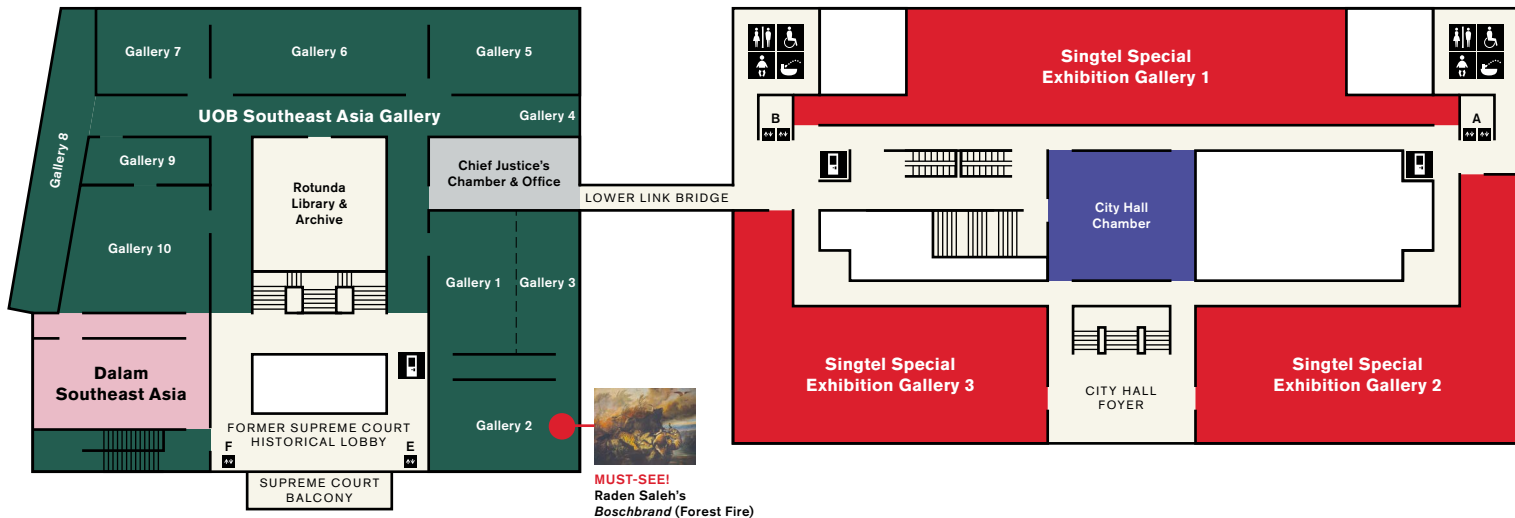
The DBS Singapore Gallery is made possible with the support of DBS.
Singapore Stories: Pathways and Detours in Art
 is supported by the Cultural Matching Fund.



**Dalam Singapore:
Tchang Ju Chi: Tireless Camel**

City Hall Wing, Level 2,
DBS Singapore Gallery

Tchang Ju Chi was a prominent artist who shaped Singapore's nascent arts scene in the 1920s–1940s. This exhibition brings together rarely seen artworks and archival materials, shedding light on his life and practice.



..... SUPREME COURT WING

..... CITY HALL WING



THE LARGEST FRENCH IMPRESSIONIST EXHIBITION IN SOUTHEAST ASIA. CLOSES 1 MAR.
Into the Modern: Impressionism from the Museum of Fine Arts, Boston



Dalam Southeast Asia: *Diplomacy and Desire: Basoeki Abdullah in Singapore*

**City Hall Wing, Level 3,
Singtel Special
Exhibition Gallery**

Into the Modern
Public Tour

English Wed–Fri 11am, 3pm
Sat–Sun 11am
Mandarin Thu–Fri 2pm
Sat–Sun 11.30am

Please refer to our website for the latest tour timings.

Explore the revolutionary world of Impressionism through iconic works by Renoir, Monet, Manet, Cézanne and Degas, never before exhibited in Singapore. Organised by the Museum of Fine Arts, Boston in partnership with National Gallery Singapore, this exhibition highlights the continuing relevance of Impressionism through themes of urban life, environmental change and labour.

The Singtel Special Exhibition Gallery is made possible with the support of Singtel.

EXHIBITION PARTNER
MFA Boston
From Boston, for the world

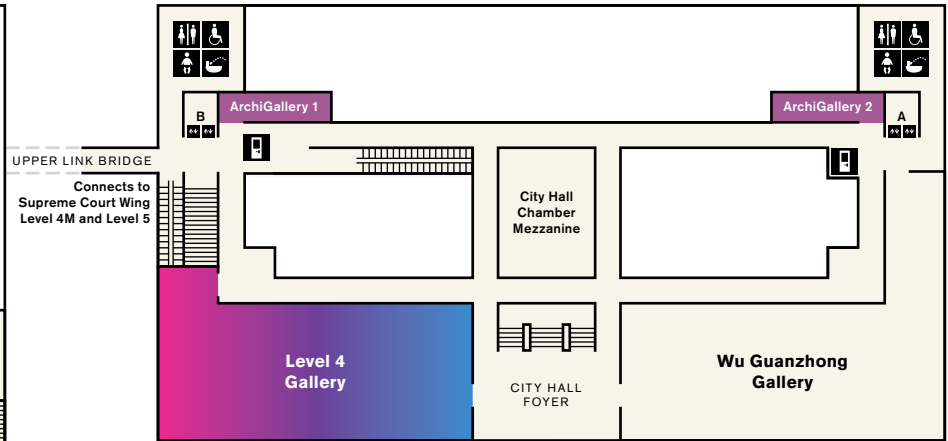
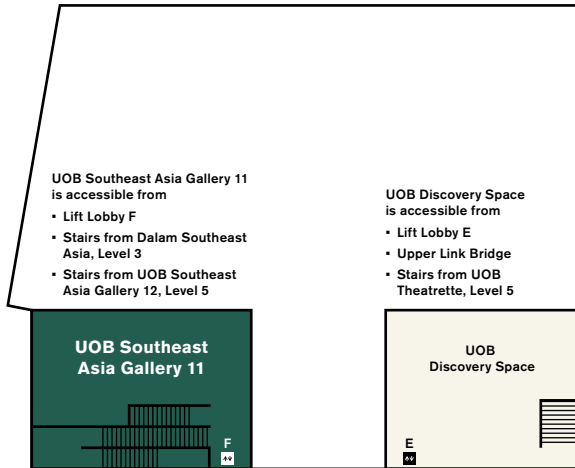
SERIES PARTNER
Singtel

PRESENTING PARTNER
J.P.Morgan

STRATEGIC PARTNER
Singapore TOURISM BOARD

Supreme Court Wing, Level 3, UOB Southeast Asia Gallery, Dalam Southeast Asia

*Dalam Southeast Asia: *Diplomacy and Desire: Basoeki Abdullah in Singapore** is an exhibition of artworks by the Indonesian painter Basoeki Abdullah (1915–1993) who is known for his paintings of stalwart statesmen and attractive women. The highlights of the exhibition are two paintings that the artist gifted to Singapore in 1959 and 1981.



Between Declarations and Dreams:
Art of Southeast Asia Since the 19th Century

**Supreme Court Wing,
Levels 3–5, UOB Southeast
Asia Gallery**

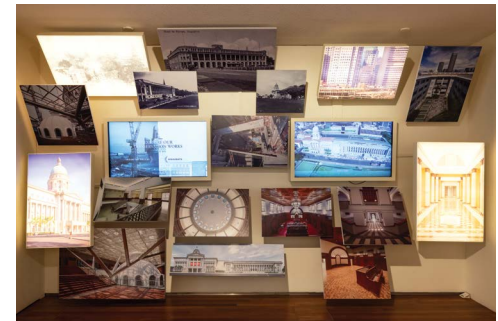
Please note that the UOB Southeast Asia Gallery will close from April 2026 for essential building works and is expected to reopen in 2027.

Explore groundbreaking experiments which took place across the region in the 1970s. In Indonesia, FX Harsono and Siti Adiyati, members of a new art movement called Gerakan Seni Rupa Baru (GSRB) favoured ordinary materials they felt were easily understood by the public to provoke critical contemplation on political violence and socioeconomic quandaries in their country.

See their works in UOB Southeast Asia Gallery 11.



CLOSING
SOON



Listening to Architecture:
The Gallery's Histories and Transformations

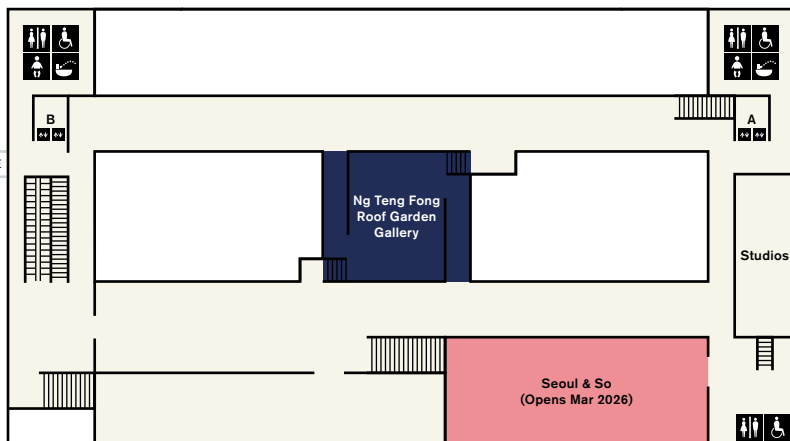
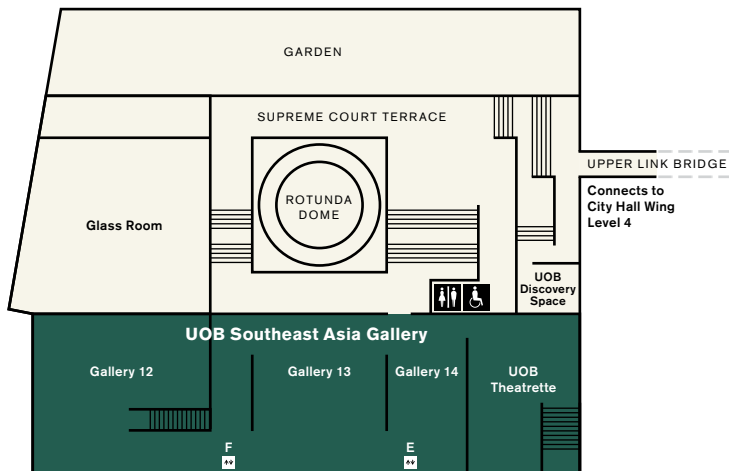
**City Hall Wing, Level 4,
ArchiGallery**

Listening to Architecture traces the journey of the City Hall and former Supreme Court buildings through a multi-sensory immersive experience, from the origins of their sites to their dramatic transformation into National Gallery Singapore.

5 & 4M

Lift
 Restroom
 Baby changing room
 Accessible restroom
 Drinking fountain
 Self-service kiosk

Between Declarations and Dreams
Temple
Shop & Dine



..... SUPREME COURT WING

..... CITY HALL WING



***Between Declarations and Dreams:
Art of Southeast Asia Since the 19th Century***

**Supreme Court Wing,
Levels 3–5, UOB Southeast
Asia Gallery**

Please note that the UOB Southeast Asia Gallery will close from April 2026 for essential building works and is expected to reopen in 2027.

**UOB Southeast Asia Gallery
Highlights Tour**
English Thu–Sun 2pm
Mandarin Sat–Sun 4pm



In this exhibition, Southeast Asian art history is characterised by a continuous encounter with the new, as the region's artists reinvented vernacular expressions and aesthetics.

See Apinan Poshyananda's pathbreaking video installation, *How to Explain Art to a Bangkok Cock* (above), in **UOB Southeast Asia Gallery 12**, as well as new displays in galleries 1, 2, 5, 8 and 11.

The UOB Southeast Asia Gallery is made possible with the support of UOB.



**Ng Teng Fong Roof Garden Commission:
Temple by Tuan Andrew Nguyen**

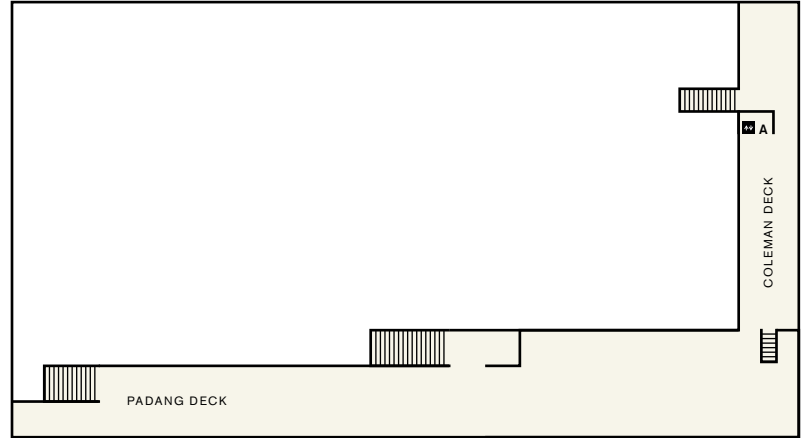
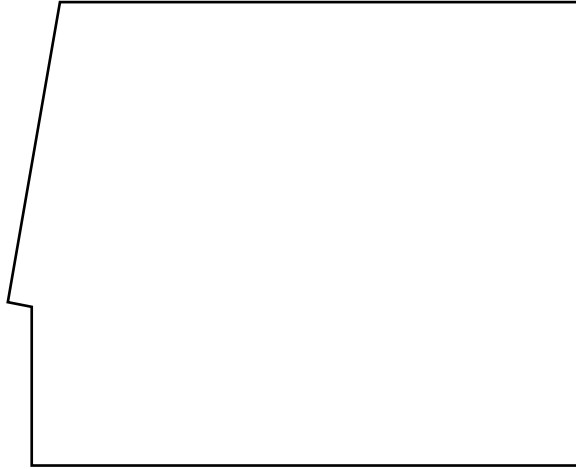
**City Hall Wing, Level 5,
Ng Teng Fong Roof Garden Gallery**

Temple invites you to take part in the creation of a healing soundscape and contemplate land, history and conflict. The monumental installation features percussive elements made from defused unexploded ordnance that when struck, generate frequencies connected to the possibility of healing and repair.

SERIES PARTNER



The Ng Teng Fong Roof Garden Commission series is made possible with the support of Far East Organization.



CITY HALL WING

GALLERY ETIQUETTE



Food and drinks are not permitted in the galleries and public spaces.



No flash photography or videography in the galleries. The use of selfie sticks, tripods and lighting equipment is not permitted in the galleries.



Please do not touch the artworks. Even clean hands can damage surfaces.



Large bags and bulky items including umbrellas should be stored in lockers located at City Hall Wing, Level B1.



Children must be accompanied by an adult at all times in the Gallery.



Pencil sketching is permitted in the galleries with sketchbooks no larger than 22 × 28cm.



Charcoal, pastel, permanent markers, watercolour and oil paint are not permitted.

Image credits

Level 5

(Middle) Apinan Poshyananda. *How to Explain Art to a Bangkok Cock*. 1985, reconstructed 2019. Painted crates and LCD monitors, 270 × 360 × 50 cm. Collection of National Gallery Singapore.

Level 4

(Left) Siti Adiyati. *Jejak* (Footstep). 1976 (remade 2015). Teak box, mirror, plastic netting and rubber slippers, 160 × 60 × 60 cm. A token of friendship from the artist's family. Collection of National Gallery Singapore.

(Middle) FX Harsono. *What Would You Do If These Crackers Were Real Pistols?* 1977–2019. Pistol crackers, pistol cracker mould, gas stove and instructions, dimensions variable. Collection of National Gallery Singapore.

Level 1

(Middle) Image courtesy of the artist and Navin Production.

Level B1

(Right) Dolorosa Sinaga. *Solidarity*. 2000/2025, open edition. Bronze, 78.5 × 96.5 × 20 cm; base: 5.5 × 106 × 32.5 cm. Collection of National Gallery Singapore. © Dolorosa Sinaga.

Must-Sees

(Left) Raden Saleh. Detail of *Boschbrand* (Forest Fire). 1849. Oil on canvas, 300 × 396 cm. Collection of National Gallery Singapore. This work has been adopted by Yong Hon Kong Foundation.

(Middle) Lee Boon Ngan. *Singapore Breakfast*. 1973. Oil on paper, 37.6 × 47.7 cm. Collection of National Gallery Singapore.

Tours

We're always adding new tours held in conjunction with ongoing exhibitions. Please check our website for the latest tour information.



SCAN FOR
LATEST INFO



DAILY TOURS

Explore the rich history of our buildings and collections by joining one of our guided tours led by trained docents. Tours last approximately 60 minutes, unless stated otherwise.

BUILDING HIGHLIGHTS

FREE! No ticket required, on-site registration required

Explore the rich stories within the walls of two national monuments—City Hall and the former Supreme Court.

DBS SINGAPORE GALLERY HIGHLIGHTS

General Admission ticket required, to be purchased separately

Explore iconic artworks and discover stories of Singapore through its art, artists and artistic heritage from the 19th century to present.

Please proceed to our Visitor Services Counter on the day of your visit to register for our tours. The Gallery reserves the right to cancel tours without prior notice.

Latest information on other various exhibition tours is available on the map and on our website.

HIGHLIGHTS OF THE GALLERY

General Admission ticket required, to be purchased separately

Join our docents and explore key architectural features and masterpieces from our long-term exhibitions on Singapore and Southeast Asian Art.

UOB SOUTHEAST ASIA GALLERY HIGHLIGHTS

General Admission ticket required, to be purchased separately

Explore over 300 artworks that highlight the deep connections between sociopolitical changes and artistic influences across Southeast Asia.

AUDIO TOURS & GUIDES

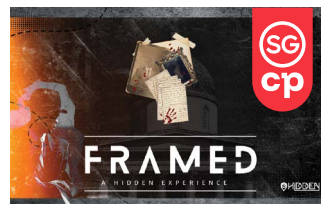
Listen to curators, artists and experts as they share stories, themes and visual elements of the Gallery's artworks and exhibitions.



SCAN TO
LISTEN



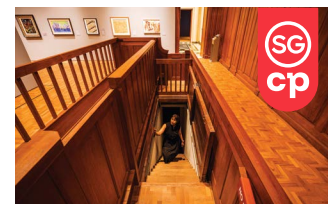
SPECIAL EXPERIENCES



FRAMED: A MURDER MYSTERY AT NATIONAL GALLERY SINGAPORE

Daily 10am, 12pm, 2pm, 4pm | Multiple locations within National Gallery Singapore | Recommended for ages 15+ | \$29.90 per pax

Immerse yourself in a self-guided murder mystery on WhatsApp, solving puzzles at your own pace. Discover 12 clues designed to inspire teamwork while exploring the Gallery's artworks and architecture. Combining problem-solving, learning and discovery, this interactive experience offers a fun, engaging way to connect with art, history and each other.



BACK-OF-HOUSE TOUR: "FORMER SUPREME COURT: UNSEEN, UNHEARD"

English Sat–Sun 2.30pm (except last Sun of the month), 4.30pm | Mandarin Sun (last Sun of the month) 2.30pm | Ticketed

This 90-minute tour offers a glimpse into restricted areas of the former Supreme Court, which are usually out of bounds to the public. Go behind the scenes and find out more about courtroom proceedings and the experience of persons on trial.

THE TOUR IS NOT SUITABLE FOR VISITORS BELOW THE AGE OF 13 AND VISITORS WITH LIMITED MOBILITY. PLEASE WEAR COMFORTABLE FOOTWEAR AND ATTIRE.

We provide a variety of group tours and experiences upon request. For more information, please email corporate-experiences@nationalgallery.sg.

VENUE RENTAL & SHOOTS

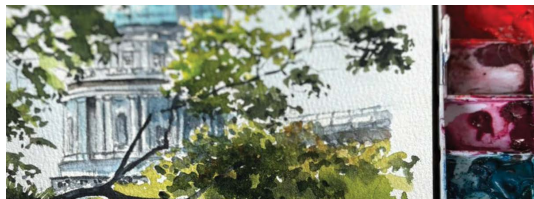
Blending rich history with exciting modernity, the Gallery's unique and timeless spaces are ideal for hosting events and shooting memorable photos and videos. For more information, please visit nationalgallery.sg/venue-rental.

Activities

Special tours, art talks, workshops, film screenings and music performances are held regularly at the Gallery. Scan the QR code to sign up!



SCAN TO
SIGN UP



SCAN TO
LEARN MORE

SEEKING OPEN AIR (OUTDOOR) & REIMAGINING THE COMMONPLACE (INDOOR): KANCHAN MEHENDALE

Sat–Sun, 14–15 Feb 2026 | 10am–1pm | Meeting point: City Hall Wing, Coleman Street Entrance | \$30, registration required

Step into the world of the Impressionists in this immersive watercolour workshop! Participants will experience the thrill of *plein air* painting—venturing outdoors to capture shifting light, vibrant colours and fleeting moments of atmosphere—just as Monet, Renoir and their peers once did. From capturing the world outside to transforming the familiar within, this workshop offers an opportunity to see and paint like an Impressionist.



SCAN TO
ENROL

ART AND THE ENVIRONMENT IN SOUTHEAST ASIA: MAKING IN A CHANGING WORLD

Curious about the dynamic intersections of art, society and the environment in Southeast Asia? Enrol in our free online course to explore how art practices respond to urgent social and ecological changes through place, community and material.

Whether you have a background in the arts, environmental studies or cultural research—or are simply passionate to learn about how creativity shapes and reflects our complex relationship with the environment—this course offers a critical and nuanced perspective on how ecology is entangled with lived realities in the region.

Sharon Chin in discussion with Teo Hui Min on the coast of Port Dickson. Image courtesy of Jying Tan

 **culture pass**

Use your SG Culture Pass credits to offset ticket purchases at the Gallery. Discover, enjoy and engage with our eligible programmes for all ages.



SCAN TO
DISCOVER
MORE



LIGHT
TO
NIGHT
SINGAPORE

**The
Power
in Us**

9–31 Jan 2026
Civic District

Free entry for all, with ticketed programmes | [LightToNight.sg](https://lighttonight.sg)

Light to Night Singapore 2026 marks the Gallery's 10th edition of the festival and will be extended across four vibrant weekends for the first time from **9 to 31 Jan 2026**.

This year's theme "**The Power in Us**" explores the profound connections forged when people and communities unite through art to reflect, converse and create. Audiences are invited to shape experiences in fresh, unexpected ways with interactive art installations, crowd-favourite façade projections, novel programmes and performances. On festival weekends, gather with friends and family to enjoy a wide array of food and beverage options at the Art × Social Festival Street.

Development Partner

Lead Partner

Matched by

**Better
Everyday**
By Tote Board

CapitaLand

**CULTURAL
MATCHING
FUND**

Families

Enjoy programmes specially designed to develop curiosity, imagination and the appreciation of art in children. Scan the QR code for the latest programme information.



SCAN FOR
LATEST INFO

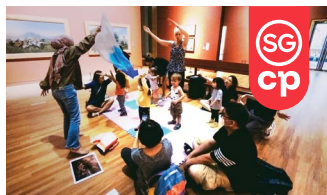
KIDS' PROGRAMMES AND ACTIVITIES

City Hall Wing, Level 1, Keppel Centre for Art Education



The Keppel Centre for Art Education will be temporarily closed for renovations from 2 Jan to end-Apr 2026.

MONTHLY PROGRAMMES



GalleryToddlers!

Want to engage your toddler in the Gallery but don't know where to start? GalleryToddlers! invites children and parents to take part in sensory play inspired by different artworks each month!

SCHOOL HOLIDAY PROGRAMMES



Art Alive!

Immerse yourselves in the world of art and let your imagination soar with Art Alive! This programme offers families a fun and exciting journey of exploration, using drama and storytelling to bring art to life.



ARTventure Camp

At our thematic ARTventure Camps, participants will dive into exciting hands-on activities, interactive gallery tours and fun collaborative projects—all designed to inspire creativity and imagination!



Free entry for all | Now till 29 Mar 2026

The highly anticipated fifth edition of the Gallery Children's Biennale coincides with the Gallery's 10th anniversary. Through the overarching theme of **Tomorrow We'll Be...**, this Biennale invites children and families to imagine the possibilities of their future by exploring the four core values of **Joy, Kindness, Dream and Love**.

Look forward to eight multi-sensorial artwork installations by local and international artists such as **Fern Wong, Wyn-Lyn Tan, Vicente Delgado, Co2_karbondioksida, Souliya Phoumivong, Hiromi Tango** and **Lee YeSeung**. The artists' responses to the theme and core values are expressed through unique and site-specific installations throughout the Gallery.

Enjoy free admission to the Biennale and take part in a series of fun and engaging programmes throughout its run!

The Gallery Children's Biennale has been one of National Gallery Singapore's signature events since 2017, embodying the Gallery's commitment to inspire young and curious minds with art. It aims to explore the many ways that children can learn and play while engaging more with the world around them.

Development Partner

**Better
Everyday**
By Tote Board

Matched by

**CULTURAL
MATCHING
FUND**

Major Partner

OUE

Shop & Dine

The Gallery has a suite of specially curated dining and retail spaces—including a Michelin-starred restaurant—that offer a variety of cuisines and unique museum merchandise.



Reservations are highly encouraged



SCAN FOR
MORE INFO



The Gallery Store by ABRY

Books and museum gifts

City Hall Wing, Level 1

Daily 10am–7pm



Bakery Brera

French-European bakery café, \$

City Hall Wing, Level 1

Tel: 8801 1273

Daily 9am–7pm



National Kitchen by Violet Oon Singapore

Singaporean restaurant, \$\$

City Hall Wing, Level 2

Tel: 9834 9935

Lunch and Dinner: Daily noon–3pm,
6–10.30pm | High Tea: Fri–Sun,
public holidays 3–5pm



Odette

Modern French restaurant, \$\$\$\$

Supreme Court Wing, Level 1

Tel: 6385 0498

Tue–Sat noon–1.15pm (last seating),
Mon–Sat 6.30–8pm (last seating),
Closed on Sun and public holidays

GALLERY PUBLICATIONS

Explore the art of Singapore and Southeast Asia through our illustrated publications. Our growing range includes exhibition catalogues, research titles and children's books.

Check them out at **The Gallery Store by ABRY**
or online at **abry.global**.



Gilmore & Damian D'Silva

Singaporean & Eurasian Heritage
restaurant, \$\$

Supreme Court Wing, Level 1

Tel: 9710 0237

Daily 11.30am–10pm



Kopi 1930 & Twenty Eight Cafe

Singaporean &
Modern Australian Café, \$

City Hall Wing, Level 1

Tel: 9159 6428

Daily 9am–7pm



Rempapa

Singaporean café, \$

Supreme Court Wing, Level 1

Tel: 9459 1603

Daily 8am–6pm



Seoul & So

Korean restaurant, \$\$

City Hall Wing, Level 5

(Opens Mar 2026)

Admissions

Purchase your tickets online or on-site from our self-service kiosks. Check out our latest promotions and rates at nationalgallery.sg/admissions.



SCAN TO PURCHASE

TICKET TYPE	SINGAPOREANS/ PRs	OTHER NATIONALITIES
General Admission + Free Guided Tours	FREE	\$20
Special Exhibition	N/A**	\$25
All Access*	\$15	\$30

Free admission for:

- Gallery Insiders
- Children aged 6 and below
- Students and teachers*
- Persons with disabilities (PWD) and their caregivers

Concession at \$5 off* for:

- Children aged 7–12
- Seniors aged 60 and above
- Full-time National Servicemen (excluding foreign personnel)
- Overseas students and teachers from qualifying institutions

* The All Access ticket grants entry to all galleries.
** Singaporeans and PRs who purchase a Special Exhibition ticket are automatically upgraded to an All Access ticket.
^ Verification is required.
From institutions with local campuses.

General Admission admits one to:

- *Singapore Stories*
- *Between Declarations and Dreams*
- *Diplomacy and Desire* (Closes 31 Mar)
- *Tchang Ju Chi*

Special Exhibition admits one to:

- *Into the Modern* (Closes 1 Mar)

Enjoy free and easy art encounters for all—no tickets required:

- City Hall Wing, Level B1, The Ngee Ann Kongsi Concourse Gallery
Fear No Power: Women Imagining Otherwise
- City Hall Wing, Level 1, Keppel Centre for Art Education
- City Hall Wing, Level 3, City Hall Chamber
Not Mere Spectators: The Makings of Multicultural Singapore (Closes 29 Mar)
- City Hall Wing, Level 4, ArchiGallery
Listening to Architecture: The Gallery's Histories and Transformations
- City Hall Wing, Level 5, Ng Teng Fong Roof Garden Gallery
Ng Teng Fong Roof Garden Commission: *Temple* by Tuan Andrew Nguyen
- City Hall Wing, Level 6, Padang and Coleman Deck
- Supreme Court Wing, Level 3, Chief Justice's Chamber & Office
Laws of Our Land: Foundations of a New Nation
- Gallery Children's Biennale 2025, multiple locations (Closes 29 Mar)

Membership

Enjoy admission privileges, free parking and discounts on dining and shopping. Join a community of art enthusiasts and elevate your art experience.



SCAN TO SIGN UP

Membership Type	EXPLORER	INSIDER
	FREE	STANDARD: \$35 / \$30^ LOCAL*: \$20 / \$15^

Free parking daily	1 hour	2 hours
Stay updated on seasonal offers	✓	✓
Unlimited free access to all exhibitions		✓
Pre-opening and after hours exhibition viewing		✓
Members-only events		✓
Shopping and dining discounts		15%#
Early bird access to exclusive offers		✓
Earn points and redeem for rewards		✓

To find out more, please visit nationalgallery.sg/membership.

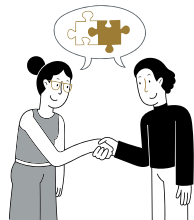
* Rate for locals apply to Singapore Citizens and Permanent Residents.
^ Concessions are available for students, full-time NSF's and seniors aged 60 and above.
Discounts may vary. Please visit nationalgallery.sg/membership for full details.
Offers are accurate at time of print.

Support the Gallery

As a registered Charity and an Institute of Public Character, National Gallery Singapore relies on your support to build collections, engage in research, develop programmes and bring art to everyone.



SCAN TO
DONATE



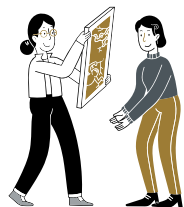
Be our Corporate Partner

Corporates can support us as an Exhibition or Programme Partner. The Gallery offers bespoke partnership opportunities to increase brand awareness while giving back to the community as well as engaging clients with unique art experiences.



Community, Education and Exhibition Partnerships

Generate new knowledge in the visual arts and engage underserved communities with impactful programmes. Help champion a thoughtful, creative and inclusive society.



Donate a Work of Art

Join other forward-thinking donors and gift an artwork, helping us to build a significant national collection, enrich our cultural heritage and ensure its enduring legacy for future generations.



Make a Bequest

Celebrate a loved one by donating in memory of them or consider leaving a legacy gift to the Gallery in your will. Your generosity will be appreciated for generations to come.

BE OUR PATRON

Be part of an art-loving community and enjoy exclusive privileges including tours, experiences and behind-the-scenes access.



SCAN TO BE A
PATRON TODAY

GALLERY PATRON

National Gallery Singapore would like to thank our corporate partners for their generous support.

Development Partner



Founding Partners



Partner



Supported by



For details on partnership opportunities, please visit nationalgallery.sg/join-give/support-the-gallery or contact us at SupportUs@nationalgallery.sg.

All gifts made are eligible for tax deductions in accordance with IRAS guidelines.

nationalgallery.sg

6271 7000

info@nationalgallery.sg

**1 St Andrew's Road
Singapore 178957**

Daily 10am–7pm



NationalGallerySingapore



NatGallerySG



新加坡国家美术馆

Copyright in the content in this brochure may also reside in persons and entities other than, and in addition to, the Gallery. The Gallery seeks to share our artworks with as many people as we can. We are fully committed to respecting the intellectual property rights of others and always use our best efforts to obtain permission for artwork images used. Please contact us should you have any queries about this. Unless otherwise mentioned, all artwork images have been provided through the courtesy of National Heritage Board, Singapore and artworks featured are from the collection of National Gallery Singapore. The Gallery Guide is published by National Gallery Singapore. All rights reserved. Materials in this publication may not be reproduced in part or in whole without written consent of the Gallery. Every effort has been made to ensure the accuracy of information within this publication. However, changes are sometimes unavoidable and the Gallery reserves the right to make modifications to the programmes and ticketing policy without prior notice. Please visit nationalgallery.sg for the most updated information. The views and opinions expressed by speakers, facilitators and docents at the workshops and tours do not necessarily represent the position of the Gallery. Published in December 2025. All information is correct at time of print.

PLEASE RETURN THIS BROCHURE FOR RECYCLING