

my BIENNALE BUDDY

TOMORROW
WE'LL BE...

A GUIDE TO THE GALLERY CHILDREN'S BIENNALE



WELCOME TO THE FIFTH GALLERY CHILDREN'S BIENNALE!

It's an art exhibition for children,
made for and with youngsters like you.

You'll find eight fun-filled artworks based on the theme
"TOMORROW WE'LL BE...", specially created by artists
from Singapore and around the world.

This little book, "MY BIENNALE BUDDY" is your guide to the
exhibition. Bring it along as it's got all the information you
need, including a map to the artworks and other important
places like the toilets and cafes.

ENJOY YOUR TIME HERE!



BIENNIALE

SAY “BEE-EH-NAHH-LAY”

**means an event—usually a fun
one—that happens once every
two years.**

The background is a solid pink color. It features several large, white, stylized cloud shapes of various sizes and orientations. On the right side, there is a large, bright yellow semi-circle representing a sun or moon.

NAME

AGE

HOW TO USE *MY BIENNALE BUDDY*

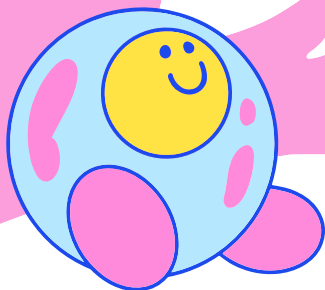
We know you may have lots of questions
about the artworks you see today, like:

What is
this artwork
about?

Who
made it?

How do I
play in the
space?

What do I
do with it?



When you arrive at each artwork, this booklet will be your BUDDY!
It will help you better understand and enjoy the artwork. Remember
to have your booklet stamped at each artwork you visit!

**TOMORROW
WE'LL BE ...**

**Hmmm... How will you complete
that sentence?**

**"TOMORROW WE'LL BE..."
is the theme for the
Gallery Children's Biennale.**

WHAT WILL YOU BE?

WHERE MIGHT YOU BE?

WHAT MIGHT LIFE BE LIKE?

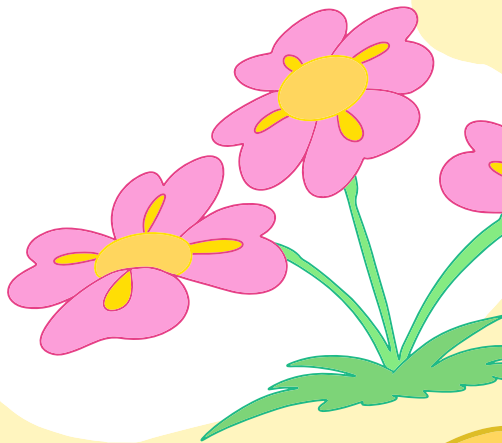
WHAT SORT OF WORLD WOULD YOU LIKE TO LIVE IN?

**HOW DO WE CREATE A TOMORROW WITH
JOY, LOVE, KINDNESS AND DREAMS IN THEM?**

Think about these questions as you explore the artworks.
While you get to know the art, you might discover some
things about yourself too!



Singapore became an independent
country 60 years ago. What do you
think people 60 years ago imagined
their future to be like?



Do you know?

The building you are standing in was constructed almost a hundred years ago. It is made up of two buildings, the former Supreme Court and former City Hall or Municipal Building. Lots of important historic events happened here! There's a gallery on Level 4 of the City Hall Wing for you to find out more.

MINDFULNESS AT THE MUSEUM

WHILE YOU ARE ENJOYING THE BIENNALE'S ARTWORKS, PLEASE REMEMBER TO:

BE GENTLE: Handle all artworks carefully so you don't break or tear anything. We want all our friends to be able to enjoy the artworks too.

USE YOUR INDOOR VOICE: Talk softly. There may be babies napping or people who don't like loud noises.

WALK, DON'T RUN: We don't want you to fall down or knock anyone or anything over.

WAIT YOUR TURN: Be patient. Everyone will get a chance to enter the artworks and take part in activities.

READ THE SIGNS IN THE GALLERY: They might tell you more about the art, or unique ways that you can learn about it.

TURN OFF YOUR FLASH: Take all the photos you like, but not with the camera flash.

HELP US KEEP THE GALLERY CLEAN: Food and drinks are not allowed near the artworks or in the galleries.



WHAT IS JOY?

Joy is a warm feeling that sits deep in our hearts and bubbles up when we delight in something that is meaningful and special to us.

It is also about being in the present and feeling happy and thankful for what you have.

You can feel joy just being with your friends and family, or discovering that the little seed you have been watering has sprouted its first leaves.

We feel joy because of our deeper connections with those moments—the love you share with your family, the delight from witnessing something wonderful in nature which you had a part in.

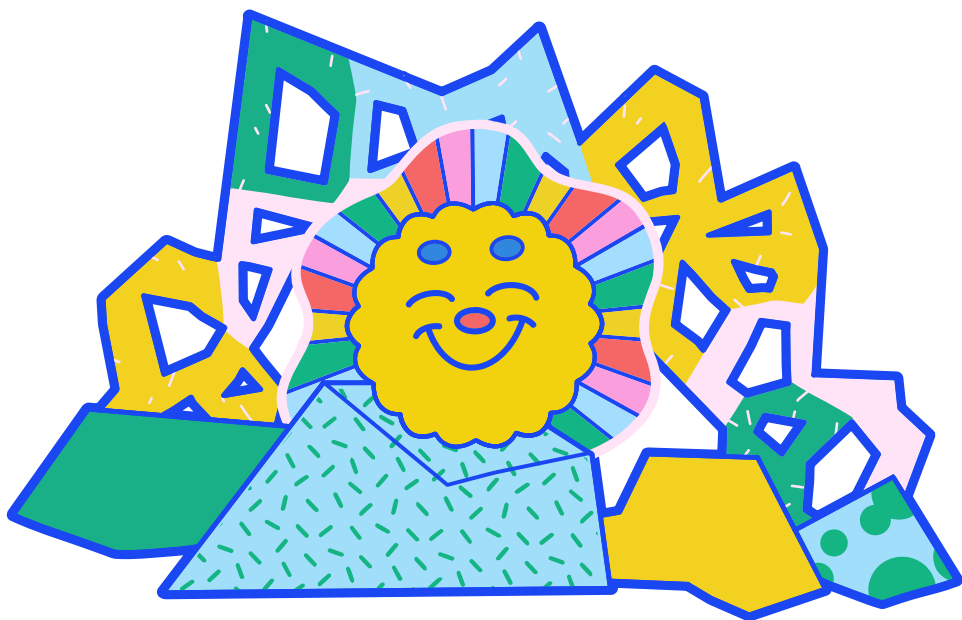
Joy can stay with us for a long time, even after that moment is over. We feel it again just thinking about that moment.

Joy may not make us laugh out loud, but it certainly makes our hearts smile and feel grateful.

COLOURFUL PLAY

BY FERN WONG (SINGAPORE)

Vinyl stickers, magnets, acrylic mirror,
recycled plastics, foam, jute rope and synthetic carpet grass
Created for Gallery Children's Biennale: Tomorrow We'll Be...



As you enter the Gallery from Coleman Street, follow the whimsical shapes down the stairs to get to the fun and vibrant work at Spine Hall.

Do you know that colours, patterns and textures can express feelings? Artists use them to express feelings of joy and happiness, or even nervousness and anger.

The designs and patterns you see are based on Fern Wong's papercut artworks. At the large interactive wall, try completing a large papercut design using the magnetic shapes. As you create, think about the question "What brings you joy?" and let your feelings take over!

As you play with them, you'll be "working" with Fern to change and build upon her artwork.

For our babies and toddler friends, play and have fun with colours using the maze, texture and mirror walls. Everything you see, touch and hear are expressions of joy.

WHO IS THE ARTIST?

Singaporean artist FERN WONG (b. 1983) is known for her vibrant, colourful artworks that project a sense of movement, lightness and joy. Using delicate paper cutouts and permanent ink markers, Fern employs intricate details and colours to create captivating works that reflect patterns of nature.

A self-taught artist, she was awarded top prize at the UOL X ART:DIS Art Prize in 2023. The UOL X ART:DIS Art Prize is the first comprehensive art competition that recognises all stages of artistic practices by artists with disabilities.

DANCE DANCE CHROMATICS

BY WYN-LYN TAN (SINGAPORE)

Vinyl stickers, wood, video, carpet and plush cushions
Created for Gallery Children's Biennale: Tomorrow We'll Be...



Walk into the installation and take it all in. What does the painting on the wall look like? Mountains? Ocean waves?

Now walk near it. Move your arms around. Step on the four footpads on the floor. Did anything happen to the artwork? What if you tried that again together with someone else?

Take time to explore the space. Stop, listen and think about what you see and hear.

This is a digital AI-generated landscape created by the artist based on 20 years of her own artworks. It is like a moving, “living,” “video-wall” painting that makes you think of fluid images of skies, seas and whatever you can imagine from being in it.

Move back and forth on the step pads at the centre of the room to see changes in colour and other fun surprises. What else can you do? Try to unlock all the changes!

Artists use colours and movement to express feelings. Explore how you can express yourself with your own movements and rhythm.

WHO IS THE ARTIST?

WYN-LYN TAN (b. 1974) is a Singaporean contemporary artist. Originally trained in Chinese ink painting, she is inspired by nature and science. Her works often embody change, shaped by chance and time. She draws upon geology, physics, alchemy and ecology, exploring organic materials and their natural processes.

Working with adding and erasing layers, movement and change, her paintings help viewers discover the natural world and encourage exploration among the young.

Her works have been exhibited in Singapore, Norway, New York and Hong Kong.

WHAT DOES LOVE LOOK LIKE?

It could be your mummy waiting to bring you home from school every day, when your friends surprise you with a birthday card, or when your pet snuggles up to you at home.

Love makes us feel happy, valued and safe.

Love is a two-way street.

We receive love and we also give love.

We love our family. But we can love many things beyond people.

We can love an object like our favourite soft toy. We can love a place, like our home and we can love animals too. Do you love your pet? Every time you think of these things, do you feel a special connection? Do you feel safe and content?

Thinking of them brings happy memories and makes those people and places even more loved and special.

What are the different ways love looks like to you?

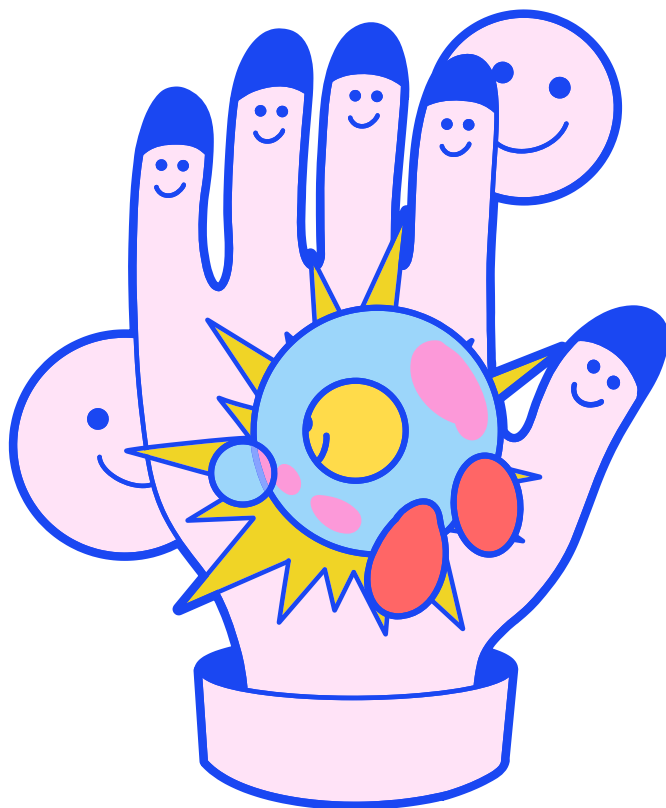
How can you show love? Let's explore the next two artworks.



I WE THEM

BY VICENTE DELGADO (SPAIN/SINGAPORE)

Inflatable structure, clear acrylic, high density foam, mixed fabric, cushion, synthetic carpet grass, plywood, vinyl stickers and steel
Created for Gallery Children's Biennale: Tomorrow We'll Be...



Come in! Look around. What has the artist drawn? So many eyes, so many smiles and so many friendly faces! Do you feel drawn to them? Do you want to smile back at them? Look! There's a giant hand. Don't you feel like giving it a high-five? And the giant giraffes at the entrance. Did they seem to beckon you to come in?

These feelings are called "connections."

We make a lot of connections in our lives—with our family and friends, our pets and even with things like our favourite toys or storybooks.

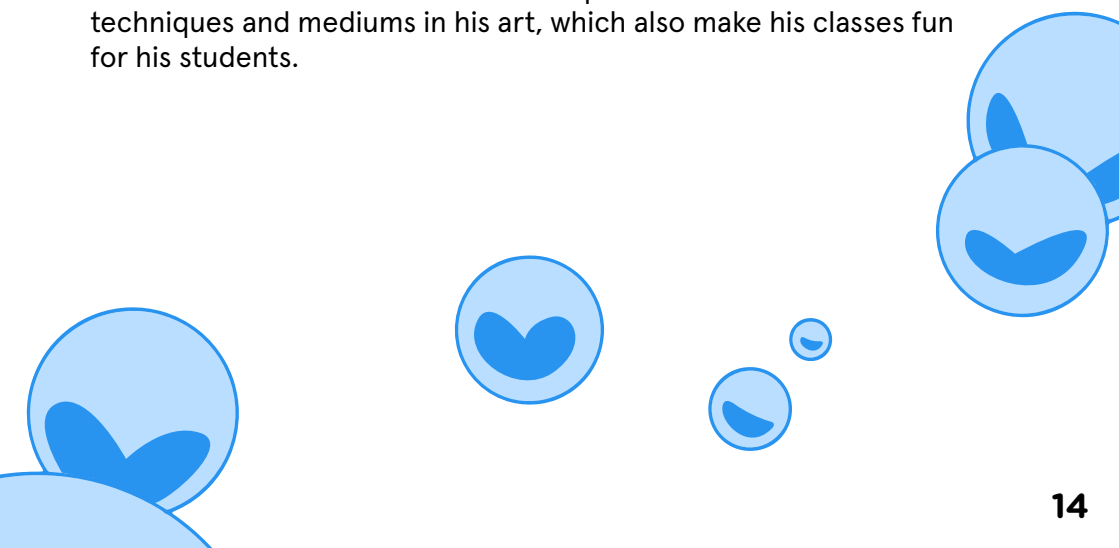
There are different kinds of connections. They can take the form of love, friendship or even just a friendly wave and smile to the canteen aunty at school.

How does it feel to share a chair with other children or sit next to them? Would they smile back? How about sitting in one of the chairs that hugs you back. How does that feel?

Further inside, you can find plenty of soft cushions and fun spinning wheels specially designed for babies and toddlers to explore and play with.

WHO IS THE ARTIST?

VICENTE DELGADO—or Tito as his family and friends call him—was born in Madrid, Spain but has been living in Singapore for over 20 years. He is a lecturer at LASALLE College of the Arts in Singapore. As an artist, he likes fun projects focused on general image-making and cultural communication. He likes to experiment with the use of different techniques and mediums in his art, which also make his classes fun for his students.



HOME IS WHERE THE HEART IS

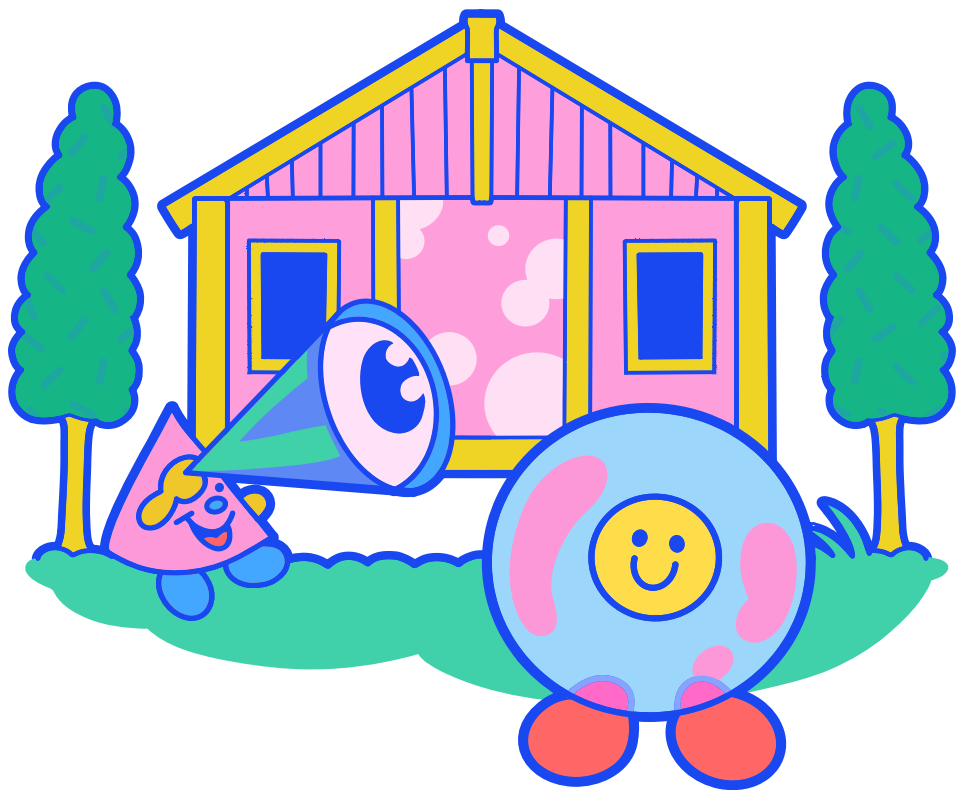
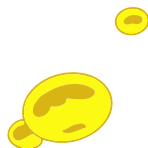
INSPIRED BY MOHAMED SALEHUDDIN


MALAY HOUSE, MALACCA

1960. Oil on canvas, 59 × 79.6 cm. Collection of National Gallery Singapore.

Vinyl stickers, wood and recycled bottle caps

Created for Gallery Children's Biennale: Tomorrow We'll Be...





Look at this painting of a traditional Malay kampung house. Many people in Singapore lived in houses like this 40 to 50 years ago. Their wide verandas and open windows were welcoming places for family and friends to gather.

Over time, the type of homes we live in have changed. But wherever we live, having family and friends around, and feeling safe and secure are what make a house feel like a home.

Explore the three types of homes in this installation. How are they different from your home?

Talk to your grandparents about where they lived as children and what life was like then.

What has changed?


What has remained the same?

What do you love about your home and neighbourhood?

How can you make your home an even better place?

WHO IS THE ARTIST?

MOHAMED SALEHUDDIN (b. 1914, d. 1982) was a famous artist who worked in Malaya in the 1950s and 1960s. He was also the secretary of Persekutuan Pelukis Melayu Malaya (Society of Malay Artists, Malaya) which he co-founded in 1949 in Singapore. He liked to paint kampung life and captured the times he lived in, when Malaysia and Singapore were becoming independent nations.



HOW DO YOU SHOW KINDNESS?

Would you ask a shy new classmate to join you for recess? Would you comfort someone who is feeling sad? Would you give up your seat to an old person on the bus or train? Do you think about the feelings and needs of those around you?

If your answer is “yes,” you are being kind.

Being friendly, polite, caring and considerate to others can help them feel safe, valued and included.

How can you make everyone feel included and safe? Think of what you can do. Would you step aside to make way for a wheelchair user? How do you communicate with people who use different languages?

If we were all kind to one another, wouldn't the world be a nicer place to live in?

Don't forget to be kind to yourself too. Do things that make you happy. Ask for help when you need it and surround yourself with family and friends who support and love you.

The next two artworks explore what it is to be kind.



LESSONS IN BEING KIND

BY SOULIYA PHOUMIVONG (LAOS)

Video (7 min 45 secs), synthetic carpet grass on fibreglass, acrylic dome, vinyl stickers and clay

Created for Gallery Children's Biennale: Tomorrow We'll Be...



Artist SOULIYA PHOUMIVONG has made a stop-motion film about being kind.

“Stop-motion” is a way of making a film. You take a toy, move it a little, take a picture. Move it again just a bit and take another picture. Keep doing this, moving and taking pictures until you have lots of pictures. When you play the pictures quickly one after another, it looks like your toy is moving.

The characters in the film are the colourful round blobs you met at the entrance of this installation. The clay figures on display there were made by children in Singapore and they were used in the film too.

There's a balancing chair but one person alone cannot make it work. There's a corner where kids can make their own stop-motion video too!

Go slow and play nicely so that others can have an enjoyable time here too.

WHO IS THE ARTIST?

SOULIYA PHOUMIVONG (b. 1983) is a new media artist from Laos, well known for making videos using film, stop-motion animation and handmade clay models. He established Clay House Studio, which produces video and stop-motion works, including the first clay animation TV show in the country. He also lectures at the National Institute of Fine Art in Vientiane, Laos.

KINDNESS GARDEN

BY HIROMI TANGO (JAPAN/AUSTRALIA)

Fibreglass, steel, plywood, vinyl stickers, plush cushions and lavender essential oil

Created for Gallery Children's Biennale: Tomorrow We'll Be...



What does it take to be kind? It starts with thinking about other people—how they feel and what they need. This beautiful “garden” invites you to discover that idea. The local children we worked with while planning for the Biennale suggested which flowers to feature.

How do you think blind people read? Braille is a writing system that you can touch. You read it by feeling the patterns of raised dots.

Learn the braille on the wall and try to read the braille on the flowers around you. What do they say?

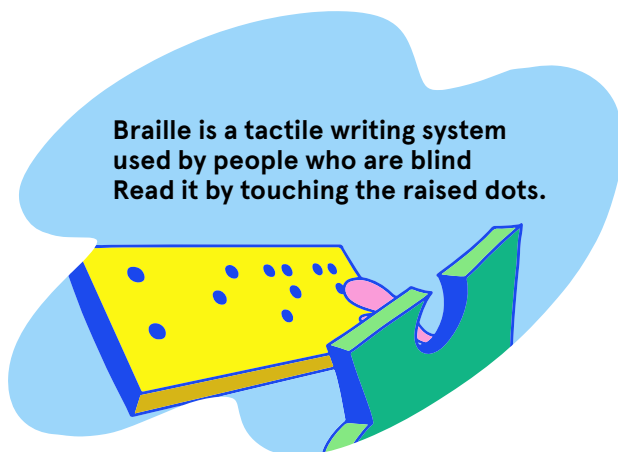
Press the sunflower petals gently, walk towards the glowing roses and move around.

Now, close your eyes and explore again. How can you enjoy the artwork? Perhaps by hearing sounds feeling textures and sensing light? Can you read the braille on the pillars and sunflower petals?

If you feel overwhelmed by the sounds, colours and lights, rest inside the lavender domes for some peace and quiet. Some of us need that, and that's okay.

WHO IS THE ARTIST?

HIROMI TANGO (b. 1976) is a Japanese Australian contemporary artist. She uses vibrant organic forms, bright colours and textiles to weave and wrap thread, wool and cloth around objects like notes and bags, making wondrous creations. Her work delves into how the brain works (neuroscience), the emotions we feel in our relationships with others, and how art has the potential to heal.



**Braille is a tactile writing system
used by people who are blind
Read it by touching the raised dots.**

WHAT DREAMS DO YOU HAVE?

Have you dreamt of fantastical things like going to school in a flying car or keeping a unicorn as a pet? Or simple things like having a sleepover with your best friend this weekend?

A dream is like a picture or a movie created in your mind. We often dream while sleeping, but we can also dream while we are awake. We can use our imagination to dream up anything we like, whether it happens now or in the future, whether it is possible or not.

We can also dream about our future. Tomorrow we'll be... A fireman? An artist? An astronaut? Tomorrow we'll be...living in a world that is kind and loving, inclusive yet excitingly diverse?

Just as your imagination helps you create art, what you dream about today can lead to amazing things you do years from now. Your dreams can help you shape your future.



FANTASY

BY CO2_KARBONDIOKSIDA (MALAYSIA)

Upcycled fabric from children's clothes,
donated toys, foam, plywood and fishing line
Created for Gallery Children's Biennale: Tomorrow We'll Be...



Have you ever wondered where your toys go when you don't want to play with them anymore? How about the clothes that you have outgrown? Sadly, most of them—and many other things—go into landfills. They are burnt and buried in the ground.

But burning things adds to global warming; landfills are filling up. This is harming our environment and the earth.

The artists created a magical place using old baby clothes, toys and other things that have been discarded.

Lie down and gaze at the giant mobile hanging from the ceiling. Play with the cubes and soak in this dreamy space. Even babies can play safely in this soft environment, stacking and balancing the cushions. This entire space is filled with the memories of children just like you!

This fantastic artwork was inspired by the artists' two-year-old daughter, Quinn. What do you think they want to tell us? What might their dream be for the future generations?

WHO IS THE ARTIST?

Malaysian husband-and-wife team OSCAR LEE and CELINE TAN are CO2_KARBONDIOKSIDA. Using discarded items like old shuttlecocks, plastic food containers and packagings, they create amazing sculptural artworks like tigers and tapirs. By using these items, the artists highlight environmental issues through their work. They invite viewers to think about their own consumption habits and how it can generate excessive waste.

IMAGINARY PEACH GARDEN

BY YESEUNG LEE (REPUBLIC OF KOREA)

Plywood, Oxford fabric inflatables, vinyl stickers, foam, Augmented Reality (AR) and digital projections

Created for Gallery Children's Biennale: Tomorrow We'll Be...



Did you know that your imagination is a superpower? There is no limit to what you can dream of and create. Your imagination is where good ideas come from.

What if you can create your own world? What would you create?

There are lots of tazo puzzle pieces here in the shape of animal parts. Find them on the shelves and also digitally in the tablets. Paws and beaks, wings and feet! They are inspired by mythical creatures from Korean and Southeast Asian legends. Take these parts and create a fantastical creature of your own.

If you're using the tablets, create your animal and see it projected on the wall. Do you see QR codes around the space? Scan them using your own devices to see your creatures come to life!

Finally, check out the large, colourful balloons here that inflate and deflate. What do they remind you of?

Stay safe! Walk slowly around the balloons and do not sit on them.

WHO IS THE ARTIST?

South Korean artist YESEUNG LEE uses digital images, projection mapping and interaction design to create her art. Her installations blend digital media, physical objects, light and shadow to create exciting, intricate images that explore the boundary between illusion and reality, and where art, technology and perception meet.



This work is presented by National Gallery Singapore in partnership with National Museum of Modern and Contemporary Art, Korea on the occasion of 50 years of diplomatic relations between Singapore and the Republic of Korea.

Partner Museum



1

COLOURFUL PLAY
BY FERN WONG (SINGAPORE)

2

LESSONS IN BEING KIND
BY SOULIYA PHOUMIVONG (LAOS)

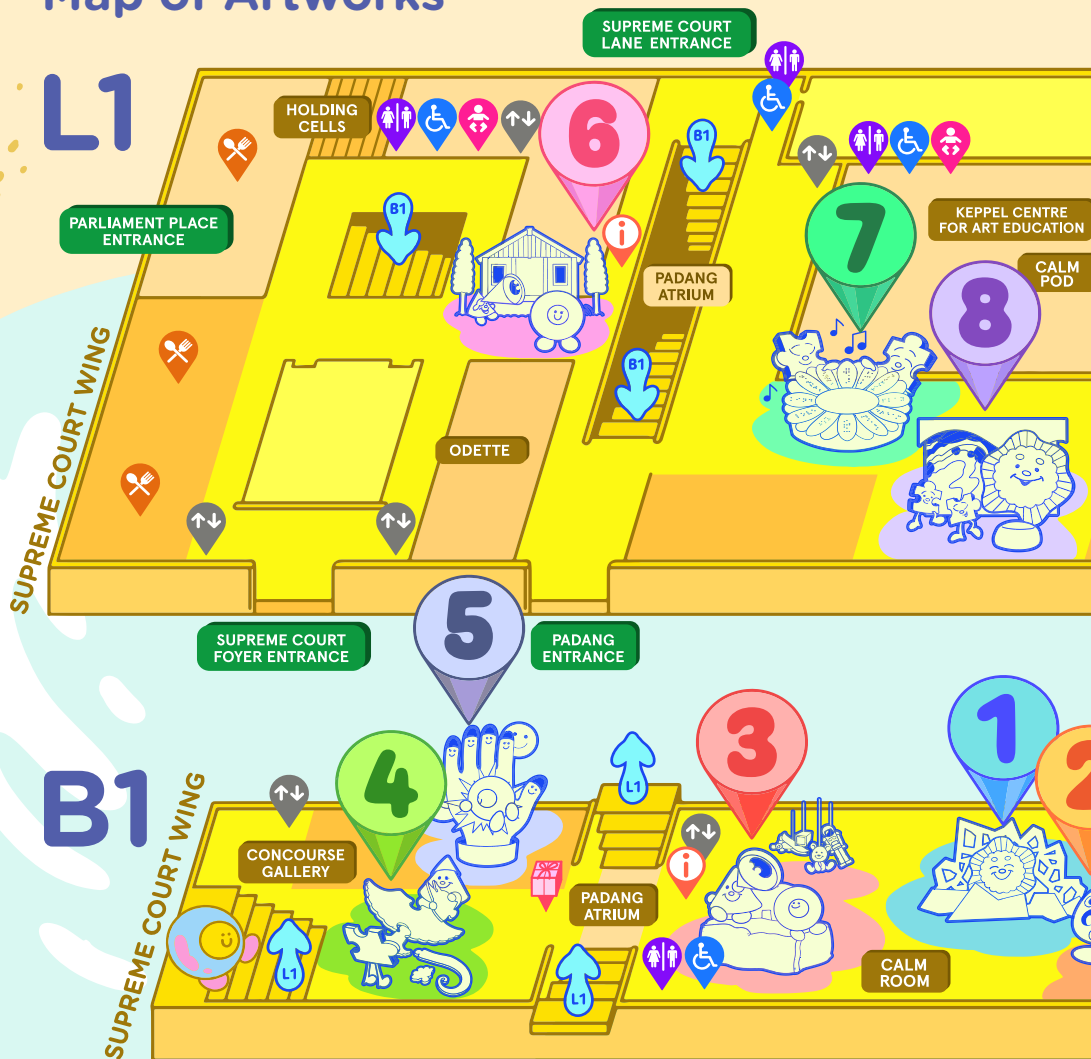
3

FANTASY
BY CO2_KARBONDIOKSIDA
(MALAYSIA)

4

**IMAGINARY PEACH
GARDEN**
BY YESEUNG LEE
(REPUBLIC OF KOREA)

Map of Artworks



5

I WE THEM

BY VICENTE DELGADO
(SPAIN/SINGAPORE)

6

HOME IS WHERE THE HEART IS

INSPIRED BY THE ARTWORK
MALAY HOUSE, MALACCA (1960)
BY MOHAMED SALEHUDDIN

7

KINDNESS GARDEN

BY HIROMI TANGO
(JAPAN/AUSTRALIA)

8

DANCE DANCE CHROMATICS

BY WYN-LYN TAN (SINGAPORE)



At each artwork, collect a stamp. Once you have collected all eight stamps, head to Tours & Programmes Counter at L1 for a free gift! *



*While stocks last.
Terms and conditions apply.

PROGRAMMES

Maya Dance and Diverse Abilities Dance Collective

SAT 31 MAY 2025 | 2PM, 4PM | PADANG ATRIUM

You're invited to enter the world of *Confluence*, a poetic journey brought to life by dancers of Diverse Abilities Dance Collective (DADC) and the poetry of Catherine Joan Devadason. The performance weaves Catherine's words into a lyrical narrative interpreted through contemporary dance.

Storytelling by Play Scene

31 MAY, 8 JUN, 6-7 SEP, 1 NOV, 6 DEC 2025, 7-8 MAR 2026 | 3PM

| VARIOUS LOCATIONS

Join us for a special storytelling adventure to explore the heart of the exhibition through stories that celebrate love, joy, kindness and dreams. Each session brings these beautiful values to life, sparking imagination and inspiring young hearts to embrace the magic of these timeless themes!



Civic District Children's Season: Little Explorer's Trail

FRI 30 MAY–SUN 29 JUN 2025

In conjunction with Children's Season, visit at least three of the five cultural institutions within the Civic District precinct to collect stamps and stand a chance to win a free sticker pack. For more information, please visit <https://artshouselimited.sg/cvd-whats-on/childrens-season>.



What Brings You Joy?

SAT 7 JUN 2025 | 3PM | SPINE HALL

Join us for a fun and creative workshop where kids can express their feelings and emotions through art! Using Fern Wong's artwork as inspiration, participants will decorate and design unique creations that reflect how they feel on magnet pieces. Together, we will explore self-expression, creativity and have fun with colour!

PROGRAMMES



Gallery Toddlers: Sensory Bottle Workshop

SUN 8 JUN 2025 | SUN 8 MAR 2026 | 10.30AM, 11.30AM (40 MIN) | CITY HALL WING, LEVEL 1, KEPPEL CENTRE FOR ART EDUCATION, EXPRESSION WORKSHOP | \$15 PER ADULT-TODDLER PAIR

Step into a world of colour and sensation! This hands-on workshop invites toddlers to create their own sensory bottles. They'll have fun experimenting with colours, textures and sounds while exploring the calming and creative effects of these interactive art pieces. A perfect way to engage the senses and spark imagination!

Crafting Tomorrow: Fabric Fun

SUN 15 JUN 2025 | 10AM, 2PM | CITY HALL WING, LEVEL 5, STUDIOS

Join us for a creative hands-on workshop focused on upcycling and sustainability!

Ages 3–5: Craft your very own fabric scrap artwork with unused drawstring bags.

Ages 6–12: Learn how to make fabric twine friendship bracelets.

Each session includes a brief introduction followed by a fun, interactive workshop where participants will engage with sustainable practices through art. Perfect for sparking creativity and environmental awareness in young minds.

Children's Carnival

SAT 1 NOV 2025 | 11AM–5PM | VARIOUS LOCATIONS

Join us for a vibrant day of activities! This exciting event promises a day filled with creative workshops, captivating performances and interactive activities designed to inspire young minds. Everyone can look forward to a fantastic lineup that encourages exploration and creativity, providing kids with the opportunity to express themselves in a fun, engaging environment.

Pop-Up Card Workshop

SAT 24 JAN 2026 | 3–4PM | CITY HALL WING, LEVEL 5, STUDIOS

Enter a whimsical world inspired by Vicente Delgado's (a.k.a. Tito) magical installations! In this fun workshop, kids will learn how to create their very own pop-up cards, bringing their favourite characters to life. With inspiration from the playful, imaginative universe of Tito's artwork, children will explore creativity, design and the magic of 3D art!

Dates of programmes are accurate at time of printing and are subject to change.

Please visit www.childrensbiennale.com for more details.



ACCESS GUIDE

Gallery Children's Biennale is committed to providing an inclusive experience for all.

Key points to note:

WHEELCHAIR ACCESSIBILITY

There is a wheelchair-friendly route that connects all the artworks, so you can easily explore the event. Most artworks have step-free access and are wheelchair accessible, except for *Fantasy* due to the cushioned flooring. However, the work can still be viewed from the entrance.

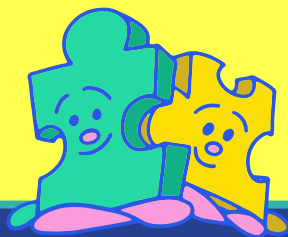
DIM LIGHTING

The artworks are generally well-lit, except for *Lessons in Being Kind*, *Imaginary Peach Garden* and *Dance Dance Chromatics*. Please mind your step.

STROLLER PARKING

There are special areas designated for stroller parking around the different installations. You will be asked to leave your stroller in these areas while you explore the exhibitions.

For more information about accessibility around the Gallery, please visit:
<https://www.nationalgallery.sg/accessibility>



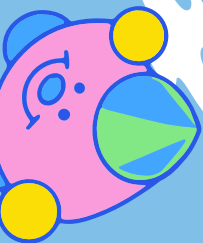
Which was your favourite artwork? Why?



**Think of the values we explored today.
How did you express Love and Kindness?**

**What did you experience at the
biennale today that gave you Joy?**

Finally, let's Dream. How would you finish the sentence, "Tomorrow We'll Be..."? (Joyful? Kind? Loving?) Draw your dream in the space here:





EXTRA FUN WITH ART PACKS!

Take your Gallery Children's Biennale experience to the next level with our Art Pack!

For the first time ever, we have specially designed the art activities for two different age groups—6 years and below, and 7 years and above!

For just \$8, you can pick up an Art Pack from our vending machines!

ACKNOWLEDGEMENTS

Writers	Editors	Special Thanks
Pepper Dog Press	Gina Ang Dee Chia Maria Khoo Joseph Andrew Lee	Chloe Ang Jocelyn Ang Raymond Chai Elaine Chan
Illustrators	Nurdiana Rahmat Huan See Tay Min Wei	Lam Yi Xuan Rachel Tan Sheryl Lynne Tan

Our appreciation to all National Gallery Singapore staff for their contributions to *My Biennale Buddy*.

SUPPORT THE GALLERY CHILDREN'S BIENNALE 2025

A donation of just \$2 is recommended for each copy of *My Biennale Buddy*.

Art sparks imagination, and imagination shapes the future. Your donation helps us keep programmes like the Children's Biennale free and accessible for children and families from all walks of life—so every young mind has a chance to explore, create, and dream. Support us here: donate.nationalgallery.sg



GALLERY

CHILDREN'S BIENNALE

TOMORROW
WE'LL BE...

DEVELOPMENT PARTNER

**Better
Everyday**
By Tote Board

MATCHED BY

CULTURAL
MATCHING
FUND

MAJOR PARTNER

OUÉ

SUPPORTER

The Grace, Shua,
and Jacob Ballas II
Charitable Trust

The Sohmen-Pao
Family and Friends