

ITINERARY

Welcome to the fifth Gallery Children's Biennale! This is an art exhibition made for and with youngsters like yourself. You'll find eight fun-filled artworks, each inspired by this year's theme, "Tomorrow We Will Be..."

Be sure to have a copy of *My Biennale Buddy* for a map of the artworks. You can also download it from the Biennale's website.

If you have 120 minutes...

Start at City Hall Wing, Level 1 for:

***Kindness Garden* by Hiromi Tango**
(Japan / Australia) 15 minutes

What does it take to be kind? It starts with thinking about other people—how they feel and what they need. By tapping on your senses of touch, sight, sound and smell, this beautiful "garden" with giant, brightly coloured flowers marked with braille invites you to discover how.



***Dance Dance Chromatics* by Wyn-Lyn Tan (Singapore)**
15 minutes

Walk into this AI-generated landscape based on the artist's works, and take it all in. Move around the interactive artwork, wave your hands, dance around and help her change it.

Home is Where the Heart is
15 minutes

We live in houses of different shapes and sizes. But what exactly makes them a home? Explore this installation inspired by a painting of a traditional Malay longhouse in a kampung.

***Colourful Play* by Fern Wong (Singapore)**
15 minutes

Follow the artist's colourful cuttings down the stairs to Basement 1. They will lead you to a large interactive wall, where children get to help shape the artwork itself. Babies and toddlers will also have fun with lots of sensory and textural play here.





Lessons in Being Kind by Souliya

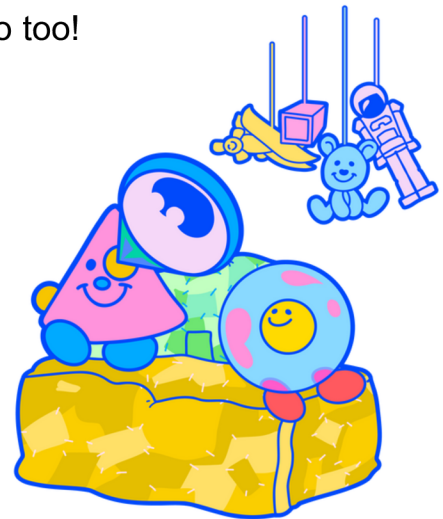
Phoumivong (Laos) 15 minutes

Walk into an immersive viewing space that takes you into a story world of stop-motion animated handmade clay models. There is also a space where children can make their own stop-motion video too!

Fantasy by Co2_karbondioksida

(Malaysia) 15 minutes

This dreamy space is made entirely of discarded toys and old children's clothes. A giant mobile repurposed from toys takes centrestage.



Imaginary Peach Garden by YeSeung Lee

(South Korea) 15 minutes

What if you can create a brave new world of fantastic creatures? Artist YeSeung Lee's installation presents tazo puzzle pieces in the shape of animals that children can explore to create their own imaginary creatures—digitally as well as in real life.



I We Them by Vicente Delgado

(Spain/Singapore) 15 minutes

Check out the larger-than-life illustrations and soft sculptures and create brand new connections. In this artwork, the lines between art and audience blur.

